

Mapping genetic interactions in human cancer cells with RNAi and multiparametric phenotyping

Christina Laufer, Bernd Fischer, Maximilian Billmann, Wolfgang Huber, and Michael Boutros.

Nature Methods (2013) 10(5):427-31 doi: 10.1038/nmeth.2

Bernd Fischer

[1em]European Molecular Biology Laboratory (EMBL),
Heidelberg, Germany
bernd.fischer@embl.de

October 26, 2023

Contents

1	Introduction	3
2	Data access	3
3	Figures from the paper.	4
4	Image segmentation and feature extraction	7
4.1	Preliminaries	7
4.2	Image segmentation	7
4.3	Feature extraction	12
5	Convert data from plate order to multi-dimensional SGI-array .	13
5.1	Preliminaries	13
5.2	Parse plate barcodes to annotate the plates	14
5.3	Reorder data	14
6	Processing of the main data set	16
6.1	Preliminaries	16
6.2	Transform features and screen normalization	16
6.3	Quality control of features.	18
6.4	Quality control of siRNA designs	19

Mapping genetic interactions in human cancer cells, Laufer, Fischer et al., 2013

6.5	Selection of non-redundant features	21
6.6	Pairwise interaction scores	24
6.7	Statistical testing of interaction terms	24
7	Example phenotypes and interactions	25
7.1	Preliminaries	25
7.2	Examples of single knock down phenotypes	26
7.3	Example of genetic interactions	26
7.4	Overlap of interactions	27
8	Correlation of interaction profiles for different siRNA designs of the same gene	29
8.1	Preliminaries	29
8.2	Correlation of interaction profiles for different siRNA designs of the same gene	29
9	Heatmaps of interaction profiles	30
9.1	Preliminaries	30
9.2	Heatmap of all siRNA profiles	30
9.3	Heatmap of best correlating siRNA profiles	32
10	Simulation of small cell number data	33
10.1	Preliminaries	33
10.2	Convert data from plate order to SGI-array	33
10.3	Transform features and screen normalization	35
10.4	Quality control of features	36
10.5	Quality control of siRNA designs	37
10.6	Selection of non-redundant features	37
10.7	Pairwise interaction scores	38
11	Distribution of positive and negative interactions	40
11.1	Preliminaries	40
11.2	Distribution of interactions.	41
12	Scatter plots between phenotypes	42
12.1	Preliminaries	42
12.2	Scatter plots of selected features	42
13	Screen plots	43
13.1	Preliminaries	43
13.2	Screen plots	43

14	Main result table	44
14.1	Preliminaries	44
14.2	Main table of interaction scores	44
15	Session info	45

1 Introduction

This document is associated with the *Bioconductor* package *HD2013SGI*, which contains the data and the *R* code for the statistical analysis presented in the paper

Mapping genetic interactions in human cancer cells with RNAi and multiparametric phenotyping

Christina Laufer, Bernd Fischer, Maximilian Billmann, Wolfgang Huber, and Michael Boutros

Nature Methods (2013) 10(5):427-31

doi: 10.1038/nmeth.2436.

In Section 2, the access to the data is described. Section 3 shows the figures from the original publication and links each figure to one of the subsequent sections, which describe the statistical analyses in the order in which they were executed. The *R* code within each section can be executed independently of the other sections. Intermediate results from each section are available in the form of *R* data objects.

To install the *HD2013SGI*, please start a current version of *R* and type

```
> if (!requireNamespace("BiocManager", quietly=TRUE))
+   install.packages("BiocManager")
> BiocManager::install("HD2013SGI")
```

2 Data access

The interaction matrix can be loaded by

```
> library("HD2013SGI")
> data("Interactions", package="HD2013SGI")
```

The element `Interactions$piscore` of this data object is a 6-dimensional array of π -scores, `Interactions$padj` is a 5-dimensional array of BH-adjusted p-values, and `Interactions$Anno` contains annotation for target genes, query genes, and phenotypes. You can type

```
> ? Interactions
```

to see the documentation of this data object. Similarly, you can use the `?` operator to obtain help on any of the below data objects; The following datasets are available:

- **Interactions** The genetic interaction data (π -scores, p-values, and annotation). **This is the main data source of this package.**

Mapping genetic interactions in human cancer cells, Laufer, Fischer et al., 2013

- **featuresPerWell** The screen data in screen order.
- **datamatrixfull** The phenotype data of all pairwise genetic perturbation experiments before quality control and feature selection.
- **QueryAnnotation** Annotation of all the query genes in the screen.
- **TargetAnnotation** Annotation of all target genes in the screen.
- **stabilitySelection** Results from the feature selection step.
- **datamatrix** The phenotype data of all pairwise genetic perturbation experiments after quality control and feature selection.
- **mainEffects** Estimated main effects (single knock down effect).
- **nrOfInteractionsPerTarget** Number of interactions per target gene.

They are intermediate results of the analysis steps described in the following, precomputed and loadable for convenience.

3 Figures from the paper

In this section all figures from the original publication are shown. In the next sections the *R* code for the analysis is documented. A link to the respective section in which the figure is generated is given for each figure.

Figure 1cd

R code for this figure is documented in Section 7.2.

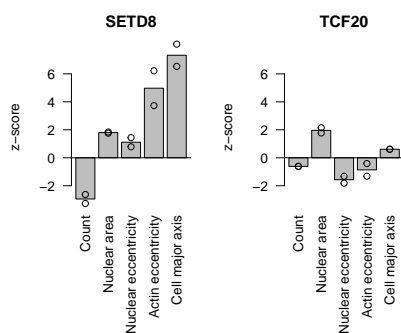


Figure 2a

R code for this figure is documented in Section 6.3.

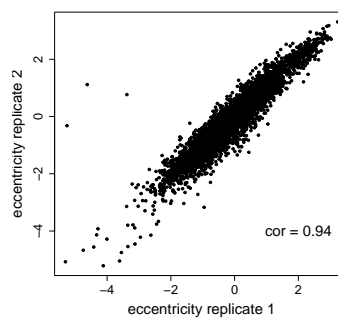


Figure 2bd

R code in Section 6.3 and 6.4.

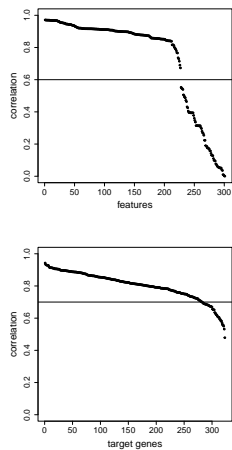


Figure 2c

Figure 2e

R code in Section 10.

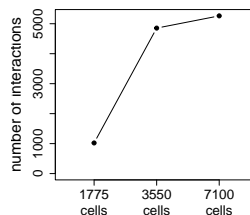
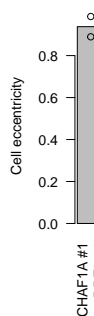


Figure 3ab

R code for this figure is documented in Section 7.3.

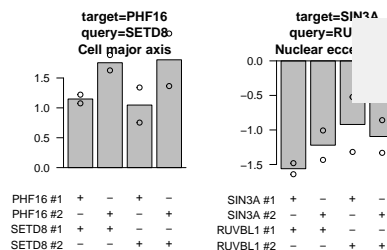


Figure 3c

R code for this figure is documented in Section 7.4.

```
> # load(file.path("result", "Figures", "Overlap.rda"))
> # print(Overlap)
```

Figure 4ac

R code for this figure is documented in Section 9.

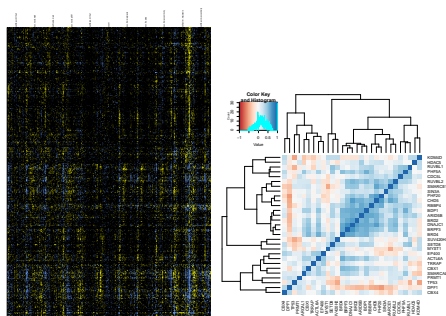


Figure 4b

R code for this figure is documented in Section 8.

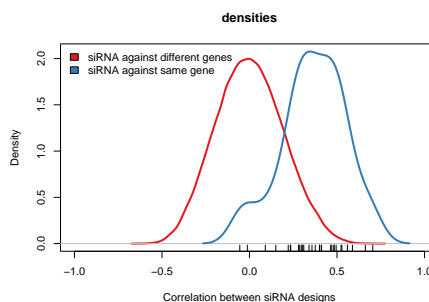


Figure S3

R code for this figure is documented in Section 6.5.

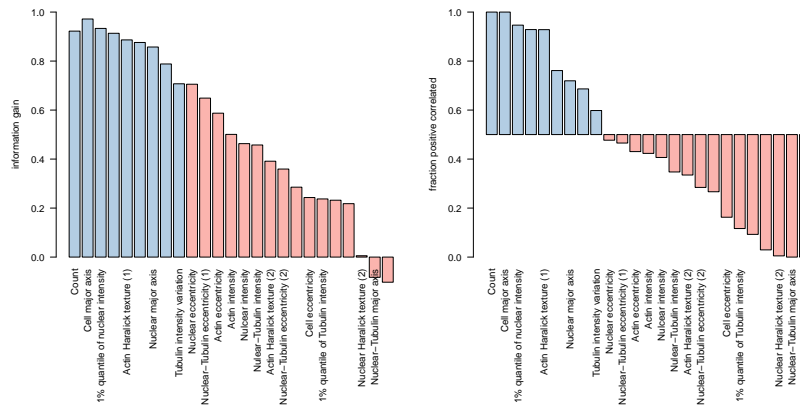


Figure S4

R code for this figure is documented in Section 12.

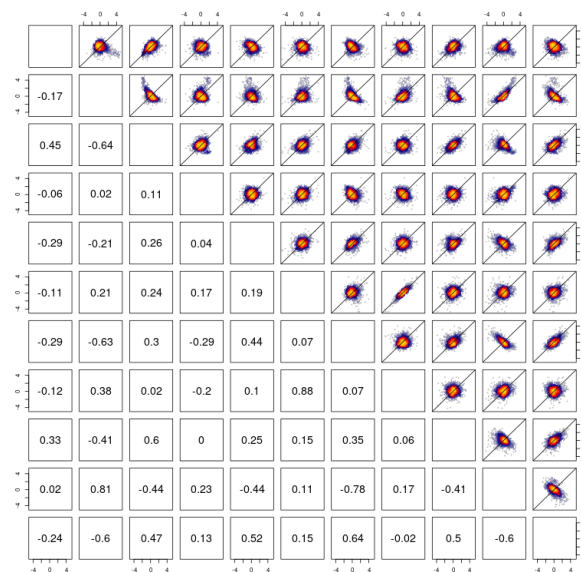
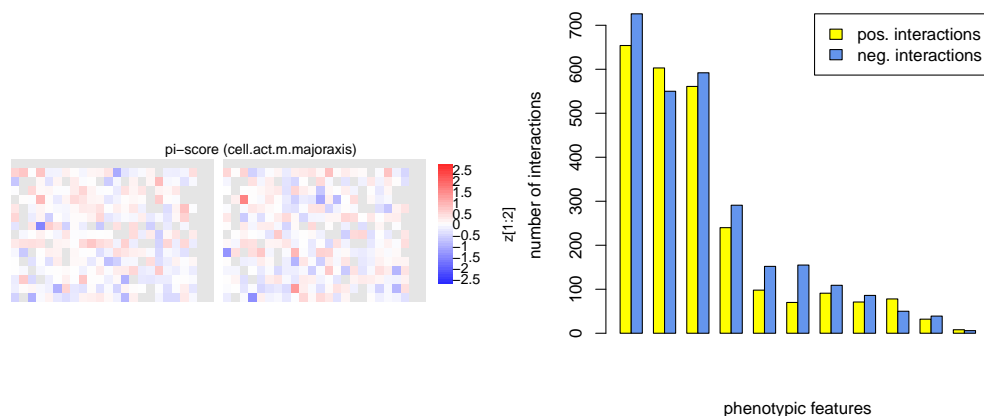


Figure S5

R code for this figure is documented in Section 13.

Figure S6

R code for this figure is documented in Section 11.



4 Image segmentation and feature extraction

4.1 Preliminaries

Load the *Bioconductor* package *HD2013SGI*.

```
> library("HD2013SGI")
> dir.create(file.path("result", "Figures"), recursive=TRUE, showWarnings=FALSE)
```

We adapted image segmentation and feature extraction methods from previous work[1, 2, 3], using the *Bioconductor* package *EBImage*[4]. The data set comprised 5.6 terabytes. Here, exemplarily we show the image segmentation and feature extraction on a clipped imaged of size 340 pixels × 490 pixels.

4.2 Image segmentation

Images were obtained from the InCell Analyzer 2000 as 12-bit TIFF images of size 2,048 pixels × 2,048 pixels at three colors. Technically the images were stored as 16bit-images, but their dynamic range only extended to 12bit (0, ..., 4095). The package contains a clipped image of size 340 pixels × 490 pixels. The three channels were saved in separate TIFF files, and we load them into the workspace as follows.

```
> fnch1 = system.file(file.path("images", "image-DAPI.tif"), package="HD2013SGI")
> fnch2 = system.file(file.path("images", "image-FITC.tif"), package="HD2013SGI")
> fnch3 = system.file(file.path("images", "image-Cy3.tif"), package="HD2013SGI")
> Img1 = readImage(fnch1)
> Img2 = readImage(fnch2)
> Img3 = readImage(fnch3)
```

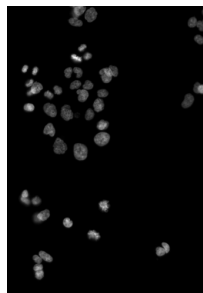
Mapping genetic interactions in human cancer cells, Laufer, Fischer et al., 2013

The images `Img1`, `Img2` and `Img3` are represented as arrays of floating point numbers. Their dynamic range depends in each case on the staining reagent, the power of the light source and the excitation time. For display purposes, the following commands obtain linearly transformed versions of the images; note however that the subsequent analysis will be performed on the original images.

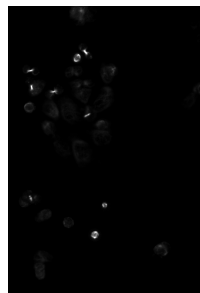
```
> ImgDAPI = normalize(Img1, inputRange=c(0.002, 0.03))
> ImgFITC = normalize(Img2, inputRange=c(0.004, 0.04))
> ImgCy3 = normalize(Img3, inputRange=c(0.002, 0.03))
```

```
> display(combine(ImgDAPI, ImgFITC, ImgCy3))
```

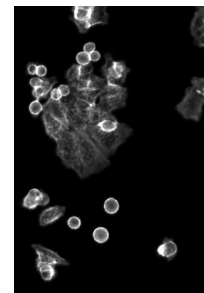
The `display` function will open the images in a browser, and you can navigate through the three channels with the arrows on the top of the page.



ImgDAPI



ImgFITC

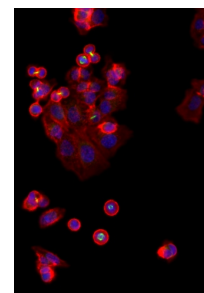


ImgCy3

We can combine the three channels to a single false color image using red for Actin, yellow for α -Tubulin, and blue for the DAPI staining.

```
> ImgColor = rgbImage(ImgCy3,ImgFITC,ImgDAPI)
```

```
> display(ImgColor)
```



ImgFITC

In a first processing step we smoothed the images by linear filtering with a Gaussian kernel with a small bandwidth of 1 pixel, respectively 3 pixels.

```
> Filter1 = makeBrush(size=51,shape = "gaussian",sigma=1)/12.91571
> Filter3 = makeBrush(size=51,shape = "gaussian",sigma=3)/12.91571
> Img1smooth = filter2(Img1, filter=Filter1)
> Img2smooth = filter2(Img2, filter=Filter3)
```

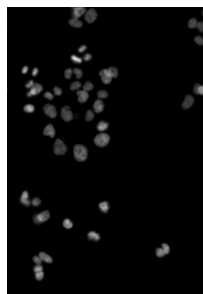

Mapping genetic interactions in human cancer cells, Laufer, Fischer et al., 2013

```
> Img3smooth = filter2(Img3, filter=Filter3)
```

The smoothed images can be displayed as above after normalization. The difference to the original images is almost not visible, but it helped to smoothen the segmentation boundaries that were generated by the next steps.

```
> smoothDAPI = normalize(Img1smooth*12.91571, inputRange=c(0.002, 0.03))
> smoothFITC = normalize(Img2smooth*12.91571, inputRange=c(0.004, 0.04))
> smoothCy3 = normalize(Img3smooth*12.91571, inputRange=c(0.002, 0.03))
```

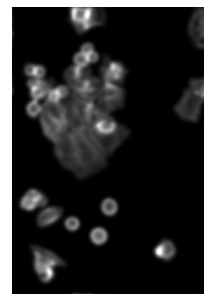
```
> display(combine(smoothDAPI, smoothFITC, smoothCy3))
```



smoothDAPI



smoothFITC



smoothCy3

Nuclei were segmented by adaptive thresholding with a window size of 10 pixels (corresponding to $7.4 \mu\text{m}$). See the next row of images for the outcomes of each of the following steps.

```
> nucleusThresh = thresh(Img1smooth, w = 10, h = 10, offset = 0.0001)
```

A morphological operation (opening) removes tiny segments and smoothen their shapes.

```
> nucleusOpening = opening(nucleusThresh, kern=makeBrush(3, shape="disc"))
```

An integer value is assigned to individually label the segmented regions.

```
> nucleusSeed = bwlabel(nucleusOpening)
```

The resulting segmentation (`nucleusSeed`), shown below, nicely separates the different nuclei from each other, but unfortunately in some cases shows holes and does not cover all of the area with nuclear staining in the image. Therefore, we generated a second segmentation, to be used as a mask, that covered the whole nuclear stained region, but which was in many places connected across neighbouring nuclei. To do so, we started with a less stringent adaptive thresholding and applied to it another morphological operation, which fills holes that are surrounded by foreground pixels.

```
> nucleusFill = fillHull(thresh(Img1smooth, w = 20, h = 20, offset = 0.00005))
```

To improve on what we had in (`nucleusSeed`), we propagated the segmented objects until the mask defined `nucleusFill` was filled. Boundaries between nuclei, in those places where the mask was connected, were found by Voronoi tessellation on a metric space that depends on the gradient field of `smoothDAPI` using the algorithm by Jones et al. [5].

Mapping genetic interactions in human cancer cells, Laufer, Fischer et al., 2013

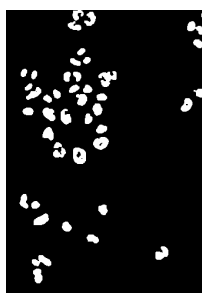
```
> nucleusRegions = propagate(Img1smooth, nucleusSeed, mask=nucleusFill)
```

We can now display the five above images from the nucleus segmentation.

```
> display(combine(nucleusThresh,  
+               nucleusOpening,  
+               colorLabels(nucleusSeed),  
+               nucleusFill,  
+               colorLabels(nucleusRegions)))
```



nucleusThresh



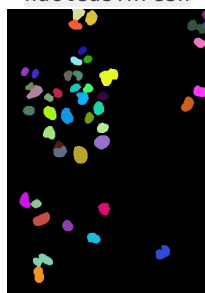
nucleusOpening



nucleusSeed



nucleusFill



nucleusRegions

To segment the cell bodies, we applied adaptive thresholding followed by morphological opening on the actin channel `Img3smooth`, similar to what we did for the nuclei on the DAPI channel (`Img1smooth`).

```
> cytoplasmThresh = thresh(Img3smooth, w = 20, h = 20, offset = 0.000001)  
> cytoplasmOpening = opening(cytoplasmThresh, kern=makeBrush(3, shape="disc"))
```

Because the cell bodies often covered large sections of whole image, adaptive thresholding did not always detect all cellular areas, and we employed a second segmentation by a global, large threshold.

```
> globalThreshold = 0.0003  
> cytoplasmOpening2 = opening(Img3smooth > globalThreshold)
```

To define the mask of image area covered by cell bodies, we combined the two cytoplasmic masks and the nuclear mask by taking their union.

```
> cytoplasmCombined = cytoplasmOpening  
> cytoplasmCombined[cytoplasmOpening2 > cytoplasmCombined] =  
+               cytoplasmOpening2[cytoplasmOpening2 > cytoplasmCombined]
```

Mapping genetic interactions in human cancer cells, Laufer, Fischer et al., 2013

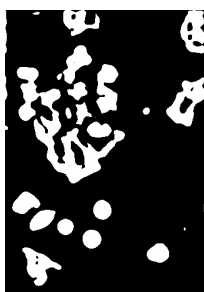
```
> cytoplasmCombined[nucleusFill > cytoplasmCombined] =  
+     nucleusFill[nucleusFill > cytoplasmCombined]
```

To define the cellular bodies, the nucleus segmentation was extended by a Voronoi tessellation-based propagation algorithm[5].

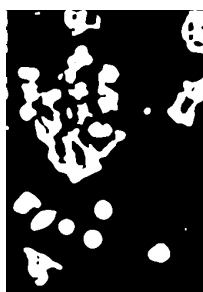
```
> cytoplasmRegions = propagate(Img3smooth, nucleusRegions, lambda=1.0e-4, mask=cytoplasmCombined)
```

The three image masks for the segmentation of the cytoplasm are displayed below.

```
> display(combine(cytoplasmThresh,  
+               cytoplasmOpening,  
+               cytoplasmOpening2,  
+               cytoplasmCombined,  
+               colorLabels(cytoplasmRegions)))
```



cytoplasmThresh



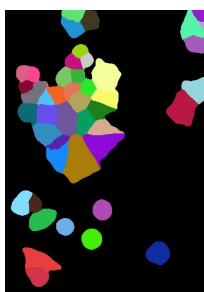
cytoplasmOpen
ing



cytoplasmOpen
ing2



cytoplasmCom
bined



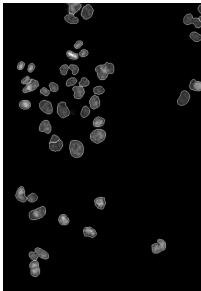
cytoplasmRe
gions

As an alternative representation, below we display the nucleus segmentation and cell body segmentation on top of the original images.

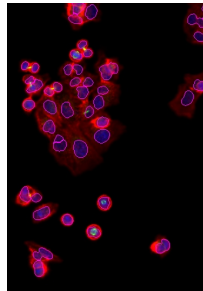
```
> Imgout1 = paintObjects(nucleusRegions,ImgDAPI, col='#ff00ff')  
> Imgout2 = paintObjects(nucleusRegions,ImgColor, col='#ff00ff')  
> Imgout3 = paintObjects(cytoplasmRegions,  
+                         paintObjects(nucleusRegions,  
+                                       toRGB(ImgDAPI),  
+                                       col='#ff00ff'),  
+                         col='#ff0000')  
> Imgout4 = paintObjects(cytoplasmRegions,  
+                         paintObjects(nucleusRegions,
```

Mapping genetic interactions in human cancer cells, Laufer, Fischer et al., 2013

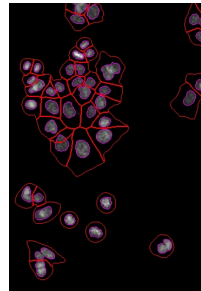
```
+                                     toRGB(ImgCy3),
+                                     col='#ff00ff'),
+                                     col='#ff0000')
> Imgout5 = paintObjects(cytoplasmRegions,
+                         paintObjects(nucleusRegions,ImgColor, col='#ff00ff'),
+                         col='#ff0000')
```



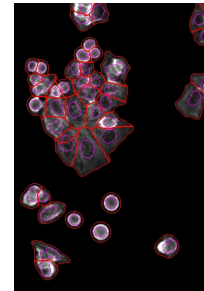
nucleusRegions
DAPI



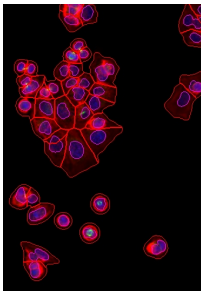
nucleusRegions
Actin/ α -
Tubulin/DAPI



cytoplasmRe
gions
DAPI



cytoplasmRe
gions
Actin



cytoplasmRe
gions
Actin/ α -
Tubulin/DAPI

4.3 Feature extraction

Features for intensity, shape and texture were extracted for each cell from the DAPI channel using the nucleus segmentation (`nucleusRegions`) and from the actin and tubulin channels using the cell body segmentation (`cytoplasmRegions`).

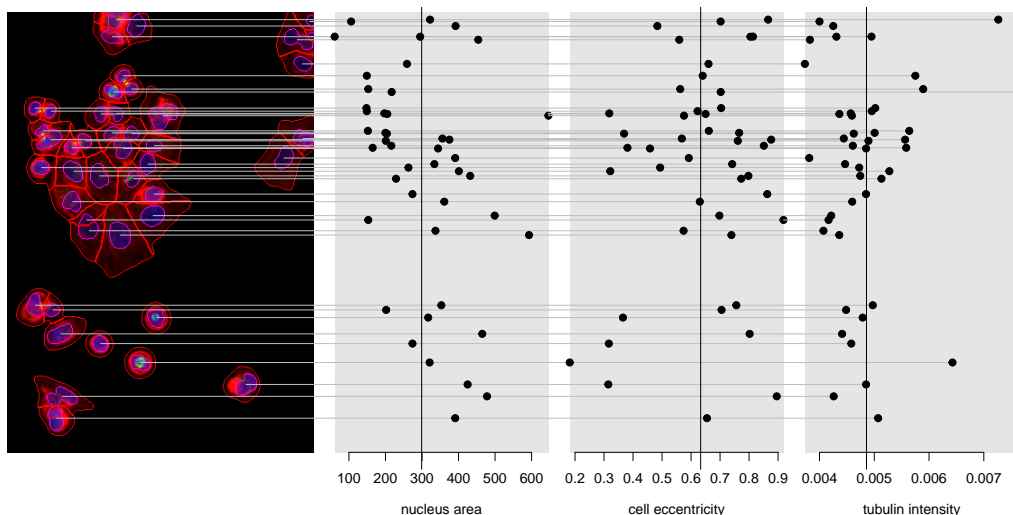
```
> F1 = computeFeatures(nucleusRegions, Img1, xname="nuc", refnames="nuc")
> F2 = computeFeatures(cytoplasmRegions,Img2, xname="cell", refnames="tub")
> F3 = computeFeatures(cytoplasmRegions,Img3, xname="cell", refnames="act")
```

Additional features were extracted from the joint distribution of the DAPI and the tubulin signals using the cell body mask.

```
> F4 = computeFeatures(cytoplasmRegions, (Img1 - mean(Img1)) * (Img2 - mean(Img2)),
+                       xname="cell", refnames="nuctub")
```

Mapping genetic interactions in human cancer cells, Laufer, Fischer et al., 2013

The below figure shows three phenotypic features for the cells segmented in the example image.



Features were summarized per experiment by the arithmetic mean over all cells, which in the figure above is indicated by the black vertical lines. The number of segmented nuclei was used as a proxy for cell count.

```
> F = cbind(F1, F2, F3, F4)
> Fwell = c(count=nrow(F), apply(F, 2, mean))
```

The equivalent of `Fwell`, computed for all images in the screen, together with associated metadata, is available as R-object `featuresPerWell` from the package and can be loaded by `data("featuresPerWell", package="HD2013SGI")`; see the next section.

5 Convert data from plate order to multi-dimensional SGI-array

5.1 Preliminaries

Load the package `HD2013SGI`.

```
> library("HD2013SGI")
```

Load screening data in workspace.

```
> data("featuresPerWell", package="HD2013SGI")
```

After image segmentation and feature extraction, a feature vector is available for each image field. The feature data are represented as a 2 dimensional table with extension 231840 image fields \times 353 phenotypic features. There are 168 plates in the screen. On those plates, `NROW` rows and `NCOL` columns were used, and `NFIELD` fields were imaged per well:

Mapping genetic interactions in human cancer cells, Laufer, Fischer et al., 2013

```
> NROW = 15
> NCOL = 23
> NFIELD = 4
```

In this section, these data are rearranged into a 6-dimensional array with one dimension each for target designs, features, and replicates.

An output directory is created where the data array will be placed in.

```
> dir.create(file.path("result","data"), recursive=TRUE, showWarnings=FALSE)
```

5.2 Parse plate barcodes to annotate the plates

Plate barcodes and plate numbers are extracted from the screen annotation. The plate annotation is summarized in a data frame.

```
> plates = featuresPerWell$Anno[seq(1, nrow(featuresPerWell$Anno), by=NFIELD*NCOL*NROW), "plate"]
> PlateAnnotation = HD2013SGI:::parsePlateBarcodes(plates)
> head(PlateAnnotation)
```

	plate	targetDesign	queryGroup	queryGene	queryDesign	replicate
1	001CIQ01IRI	1	sample	01	1	1
2	002CIQ01IIRI	1	sample	01	2	1
3	003CIIQ01IRI	2	sample	01	1	1
4	004CIIQ01IIRI	2	sample	01	2	1
5	005CIQ02IRI	1	sample	02	1	1
6	006CIQ02IIRI	1	sample	02	2	1

The names of all query genes, siRNA designs, and replicates are extracted for all sample experiments.

```
> S = which(PlateAnnotation$queryGroup=="sample")
> tdnames = unique(PlateAnnotation$targetDesign[S])
> qnames = unique(PlateAnnotation$queryGene[S])
> qdnames = unique(PlateAnnotation$queryDesign[S])
> repnames = unique(PlateAnnotation$replicate[S])
```

5.3 Reorder data

In this step, we create the array `D` and fill it with the data. The target genes are spread over the three dimensions `field`, `col` and `row`. The mean of the measurements in the 4 fields per well is taken.

```
> D = array(0, dim=c(field=NFIELD, col=NCOL, row=NROW,
+                   features=dim(featuresPerWell$data)[2],
+                   targetDesign=length(tdnames),
+                   query=length(qnames),
+                   queryDesign=length(qdnames),
+                   replicate=length(repnames)))
> dimnames(D) = list(field=seq_len(NFIELD),
+                   col=seq_len(NCOL), row=LETTERS[seq_len(NROW)+1],
+                   features=dimnames(featuresPerWell$data)[[2]],
```

Mapping genetic interactions in human cancer cells, Laufer, Fischer et al., 2013

```

+         targetDesign=tdnames,
+         queryGene=qnames,
+         queryDesign=qdnames,
+         replicate=repnames)
> for (td in tdnames) {
+   for (q in qnames) {
+     for (qd in qdnames) {
+       for (r in repnames) {
+         plate = PlateAnnotation$plate[
+           which((PlateAnnotation$targetDesign == td) &
+                (PlateAnnotation$queryGene == q) &
+                (PlateAnnotation$queryDesign == qd) &
+                (PlateAnnotation$replicate == r)) ]
+         I = which(featuresPerWell$Anno$plate == plate)
+         D[, , , td, q, qd, r] = as.vector(featuresPerWell$data[I,])
+       }
+     }
+   }
+ }
> D[is.na(D)] = 0
> D = (D[, , , , , ] + D[, , , , , ] + D[, , , , , ] + D[, , , , , ])/4
> # faster than D = apply(D, 2:8, mean, na.rm=TRUE)
> dim(D)

      col      row  features targetDesign      query queryDesign
replicate
      23       15      353           2        20          2
      2

```

The dimensions are reordered, and row and column dimensions are merged into a single dimension for target genes. The data is saved to disk.

```

> D = aperm(D, c(1, 2, 4, 5, 6, 3, 7))
> dn = dimnames(D)
> dim(D) = c(prod(dim(D)[1:2]), dim(D)[3:7])
> dimnames(D) = c(list(targetGene =
+                   sprintf("%s%d", rep(LETTERS[seq_len(NROW)+1], each=NCOL),
+                                     rep(seq_len(NCOL), times=NROW))),
+                 dn[3:7])
> datamatrixfull = list(D = D)
> save(datamatrixfull, file=file.path("result", "data", "datamatrixfull.rda"))

```

The raw data are now represented in the 6-dimensional array D with dimensions

	345	target genes
×	2	siRNA target designs
×	20	query genes
×	2	siRNA query designs
×	353	phenotypic features
×	2	biological replicates

A precomputed version of the `datamatrix` is available from the package and can be loaded by `data(datamatrix, package="HD2013SGI")`.

6 Processing of the main data set

6.1 Preliminaries

Load the *Bioconductor*-package *HD2013SGI*.

```
> library("HD2013SGI")
```

Load data and screen annotation in workspace.

```
> data("datamatrixfull", package="HD2013SGI")
> D = datamatrixfull$D
> data("TargetAnnotation", package="HD2013SGI")
> data("QueryAnnotation", package="HD2013SGI")
```

Output directories are created where the data, figures and tables will be placed in.

```
> dir.create(file.path("result", "data"), recursive=TRUE, showWarnings=FALSE)
> dir.create(file.path("result", "Figures"), recursive=TRUE, showWarnings=FALSE)
> dir.create(file.path("result", "Tables"), recursive=TRUE, showWarnings=FALSE)
```

Get indices for different sets of experiments (samples, controls, ...).

```
> IndexSAMPLE = which(TargetAnnotation$group == "sample")
> IndexCTRL = which(TargetAnnotation$group == "SingleKDctrl")
> IndexNEG = which(TargetAnnotation$group == "negctrl")
> IndexSAMPLENEG = c(IndexSAMPLE, IndexNEG)
```

Set the color value for controls.

```
> colCTRL = rep("gray", nrow(TargetAnnotation))
> colCTRL[TargetAnnotation$group == "SingleKDctrl"] = "royalblue"
> colCTRL[TargetAnnotation$group == "negctrl"] = "red"
```

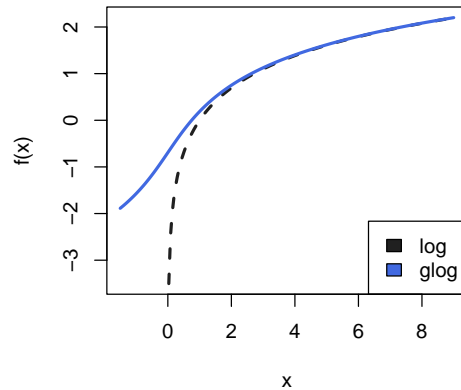
6.2 Transform features and screen normalization

Previous genetic interaction screens that were based on a quantitative cell viability phenotype were analysed using a multiplicative interaction model [6, 7, 8, 9, 10]. For model fitting, it is then convenient to transform the data to a logarithmic scale. Motivated by [11, 12], we adapted this approach to all features considered here. Since some features had a non-positive range of values, instead of the logarithm we applied a generalized logarithm transform [13]

$$f(x; c) = \log \left(\frac{x + \sqrt{x^2 + c^2}}{2} \right). \quad \mathbf{1}$$

This family of functions has one parameter c . For $c = 0$, the function is equivalent to an ordinary logarithm transformation. For $c > 0$, the function is smooth for all values of x (including 0 and negative values), avoiding the singularity of the ordinary logarithm at $x = 0$, but still approximately equivalent to the ordinary logarithm for $x \gg c$ as shown in the following plot.

Mapping genetic interactions in human cancer cells, Laufer, Fischer et al., 2013



For each feature, we chose c to be the 3%-quantile of the feature's empirical distribution.

```
> for (i in seq_len(dim(D)[5])) {  
+   m = quantile(D[,,,i], probs=0.03, na.rm=TRUE)  
+   D[,,,i] = glog(D[,,,i], m)  
+ }
```

After transformation, to take account of the plate and batch effects and differences in efficiency of the siRNA transfection, an additive normalization is performed per plate. The plate median is set to be equal for all siRNA designs and replicates for each query gene and phenotypic feature. This compensates for global differences between replicates and siRNA designs.

```
> M = apply(D, c(2:6), median, na.rm=TRUE)  
> M2 = apply(M, c(2,4), mean)  
> M2 = rep(M2, times=8)  
> dim(M2) = dim(M)[c(2,4,1,3,5)]  
> M2 = aperm(M2, c(3,1,4,2,5))  
> M = M - M2  
> M = rep(M[, , each=dim(D)[1])  
> dim(M) = dim(D)  
> D = D - M
```

After transformation, to take account of the fact that the data range of the different features was different, data were centered and scaled separately for each feature. Center and scale were computed as the median and median absolute deviation, respectively.

```
> for (i in seq_len(dim(D)[5])) {  
+   D[,,,i] = (D[,,,i] - median(D[,,,i], na.rm=TRUE)) /  
+             mad(D[,,,i], na.rm=TRUE)  
+ }
```

In the following, we will refer to the array of transformed, centered and scaled values as D_{ijklmr} with the indices i, j, k, l, m, r counting over the 6 dimensions of the data cube with extensions

	345	target genes (i)
×	2	siRNA target design (j)
×	20	query genes (k)
×	2	siRNA query designs (l)
×	353	phenotypic features (m)
×	2	biological replicates (r)

6.3 Quality control of features

To control for the quality of each feature, its reproducibility over replicate measurements was assessed. For each feature f , we computed the two vectors \mathbf{v}_f^1 and \mathbf{v}_f^2 ,

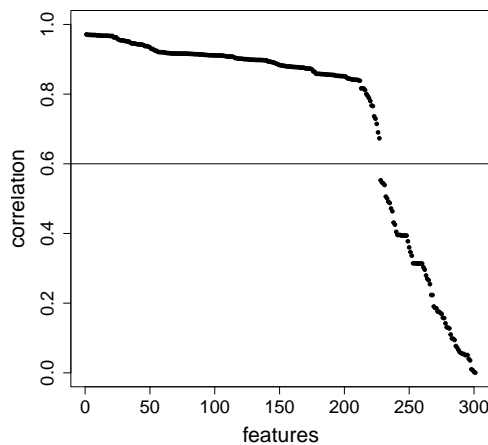
$$\mathbf{v}_f^l = D_{\cdot \cdot \cdot f l} \quad \text{for } l = 1, 2. \quad \mathbf{2}$$

Here, the notation \cdot indicates averaging over an index, and the notation \cdot indicates extraction of the whole subspace spanned by this index. Here, we used only the 323 sample genes, since the set of target genes contained a number of negative and positive controls. Thus, \mathbf{v}_m^l is a vector with $323 \times 20 = 6460$ elements. We then computed the correlation coefficient ρ_f between \mathbf{v}_f^1 and \mathbf{v}_f^2 .

```
> C = rep(NA_real_, dim(D)[5])
> D2 = (D[,1,,1,,] + D[,2,,1,,] + D[,1,,2,,] + D[,2,,2,,]) / 4
> for (i in seq_len(dim(D)[5])) {
+   C[i] = cor(as.vector(D2[IndexSAMPLE,,i,1]), as.vector(D2[IndexSAMPLE,,i,2]))
+ }
```

We plot the correlation coefficients for all 353 features.

```
> plot(sort(C, decreasing=TRUE), pch=20, xlab="features", ylab="correlation", ylim=c(0,1),
+       cex.lab=1.75, cex.axis=1.5)
> abline(h=0.6)
```

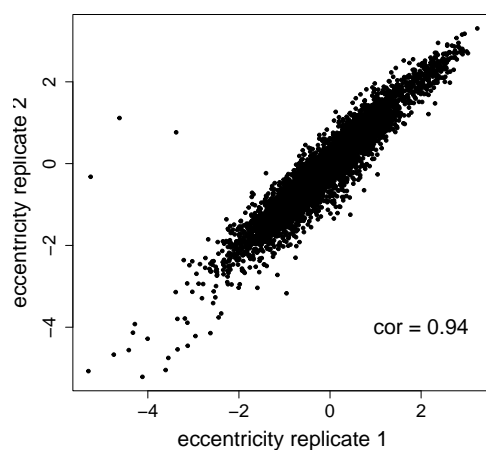


As an example, the scatter plot of eccentricity measurements is plotted for two replicates.

```
> i = "cell.Bact.m.eccentricity"
> plot(as.vector(D2[IndexSAMPLE,,i,1]),
```

Mapping genetic interactions in human cancer cells, Laufer, Fischer et al., 2013

```
+ as.vector(D2[IndexSAMPLE,,i,2]),
+ pch=20, cex.lab=1.75, cex.axis=1.5,
+ xlab="eccentricity replicate 1",
+ ylab="eccentricity replicate 2")
> cc = cor(as.vector(D2[IndexSAMPLE,,i,1]),
+         as.vector(D2[IndexSAMPLE,,i,2]))
> text(x=2, y=-4, sprintf("cor = %0.2f",cc), cex=1.75)
```



We selected features with a correlation of at least 0.6 for subsequent analysis. 227 out of 353 features passed quality control.

```
> I = which(C >= 0.6)
> D = D[,,,I,,drop=FALSE]
> dim(D)

[1] 345  2  20  2 227  2
```

The dimension of the data cube after quality control of the phenotypic features is

	345	target genes
×	2	siRNA target designs
×	20	query genes
×	2	siRNA query designs
×	227	phenotypic features
×	2	biological replicates

6.4 Quality control of siRNA designs

To detect cases where the siRNA reagents for our target genes had off-target effects, we compared the phenotypic profiles of the two siRNA designs for each target gene. To this end, we computed the vectors

$$\mathbf{w}_{if}^j = D_{ij \cdot - f -}$$

3

Mapping genetic interactions in human cancer cells, Laufer, Fischer et al., 2013

using only those features that passed the quality filter described in Section 6.3. We then computed the correlation $\tilde{\rho}'_{if}$ between \mathbf{w}_{if}^1 and \mathbf{w}_{if}^2 . The congruence score

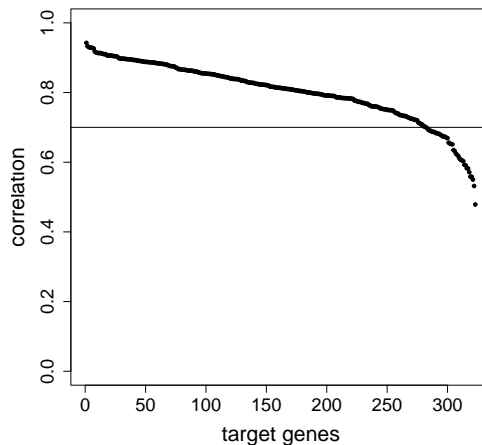
$$\tilde{\rho}_i = \tilde{\rho}'_{i-} \quad 4$$

is the mean over the correlation coefficients of each feature.

```
> D1 = (D[,,,1,,1] + D[,,,1,,2] + D[,,,2,,1] + D[,,,2,,2])/4
> Cdesign1 = rep(NA_real_,dim(D)[1])
> for (k in seq_len(dim(D)[5])) {
+   for (i in seq_len(dim(D)[1])) {
+     Cdesign1[i] = cor(as.vector(D1[i,1,,k]),as.vector(D1[i,2,,k]))
+   }
+   if (k == 1) {
+     Cdesign1all = Cdesign1
+   } else {
+     Cdesign1all = Cdesign1all + Cdesign1
+   }
+ }
> Cdesign1all = Cdesign1all / dim(D)[5]
```

The congruence scores for all target genes are plotted in decreasing order.

```
> plot(sort(Cdesign1all[IndexSAMPLE], decreasing=TRUE),
+       pch=20, cex.lab=1.75, cex.axis=1.5, ylim=c(0,1),
+       xlab="target genes",ylab="correlation")
> abline(h=0.7)
```

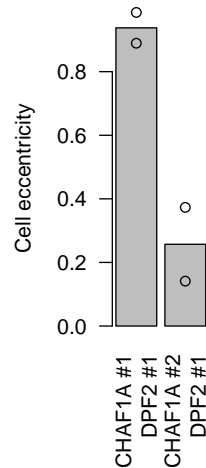


CHAF1A is an example gene with a low congruence score. Exemplarily a barchart for the cell eccentricity for the double knock-downs of both siRNA designs of CHAF1A together with siRNA design 1 of DPF2 is plotted.

```
> f = "cell.Bact.m.eccentricity"
> D1 = D[ TargetAnnotation$Symbol == "CHAF1A",,QueryAnnotation$Symbol == "DPF2",1,f,]
> bp = barplot(apply(D1,1,mean),ylab="Cell eccentricity",
+              names.arg=c("CHAF1A #1\nDPF2 #1","CHAF1A #2\nDPF2 #1"),las=2)
```

Mapping genetic interactions in human cancer cells, Laufer, Fischer et al., 2013

```
> points(bp,D1[,1])
> points(bp,D1[,2])
```



Target gene i was selected for subsequent analysis if $\tilde{\rho}_i \geq 0.7$. The number of target genes passing quality control was 282 out of 323. Additionally, 7 negative control target siRNAs were selected.

```
> I = IndexSAMPLE[Cdesign1all[IndexSAMPLE] >= 0.7]
> I = c(I, IndexNEG)
> D = D[I,,,,,drop=FALSE]
> TargetAnnotation = TargetAnnotation[I,]
> dim(D)

[1] 289  2  20  2 227  2
```

The dimension of the data cube D after quality control of the siRNA designs is

	289	target genes
×	2	siRNA target designs
×	20	query genes
×	2	siRNA query designs
×	227	phenotypic features
×	2	biological replicates

6.5 Selection of non-redundant features

The 227 features are highly redundant. We selected a set of non-redundant features. To do so, in the following the phenotypic profiles are summarized over all siRNA designs, and control measurements are excluded.

```
> D1 = (D[,1,,1,,] + D[,1,,2,,] + D[,2,,1,,] + D[,2,,2,,]) / 4
> D1 = D1[TargetAnnotation$group == "sample",,,]
```

3000 perturbations are randomly selected to speed up the selection process.

Mapping genetic interactions in human cancer cells, Laufer, Fischer et al., 2013

```

> dim(D1) = c(prod(dim(D1)[1:2]), dim(D1)[3:4])
> D1 = aperm(D1, c(1,3,2))
> set.seed(5830458)
> Sample = sample(seq_len(dim(D1)[1]), 3000)
> subSampleForStabilitySelection = list(D = D1[Sample,,],
+                                       Sample = Sample,
+                                       phenotype = dimnames(D)[[5]])

```

Next, the feature selection was performed. The feature *number of cells* was manually pre-selected because of its biological interest. All other features were selected automatically in a sequential way. In each step, all remaining candidate features were evaluated separately. Let $F(i)$ be the features that were selected after step i . In step i , for all candidate features f a linear regression was fit on the previously selected features.

$$D_{\dots f} \sim D_{\dots F(i-1)} \quad \mathbf{5}$$

Let $r_{\dots f}$ be the residuals of this fit, i.e., the component of $D_{\dots f}$ that is orthogonal to the linear subspace spanned by $D_{\dots F(i-1)}$. The residuals are a composition of random noise and biological information that is non-redundant to the previously selected features. To estimate if there still exists unexplained biological signal, the Pearson correlation coefficient $\bar{\rho}_f$ of the residual vectors $r_{\dots f_1}$ and $r_{\dots f_2}$ between the two biological replicates was computed. It can be considered a proxy for the signal-to-noise ratio of these residuals. The feature with the largest correlation coefficient $\bar{\rho}$ was selected.

```

> stabilitySelection = HD2013SGIselectByStability(subSampleForStabilitySelection,
+                                               preselect = c("count"),
+                                               Rdim = 25, verbose = TRUE)

```

The step-wise approach was stopped when the number of positive correlation coefficients was smaller than or equal to the number of negative correlation coefficients,

$$\sum_f (\Theta(\bar{\rho}_f)) \leq \sum_f (\Theta(-\bar{\rho}_f)) \quad \mathbf{6}$$

where $\Theta(x)$ is the Heaviside function. This criterion is motivated by the observation that for random data, half of the correlation coefficients is expected to be positive and the other half is expected to be negative.

```

> Sel = (stabilitySelection$ratioPositive >= 0.5)
> sum(Sel)

[1] 9

```

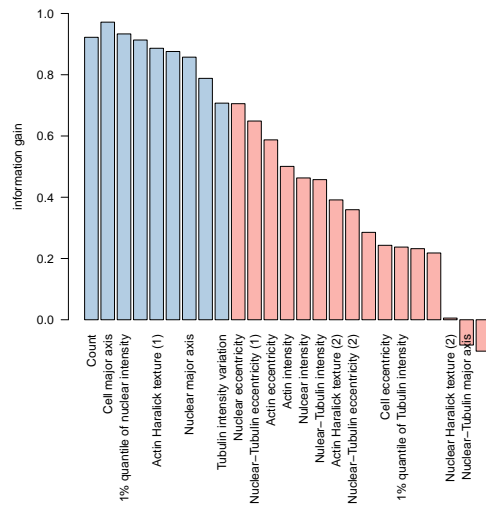
Thus, a set of 9 features was considered to contain non-redundant information. The barplot below shows the correlation coefficients of the residual features, which was considered the proxy for information content.

```

> barplot(stabilitySelection$correlation,
+         names.arg=HD2013SGI:::humanReadableNames[stabilitySelection$selected],
+         col=ifelse(Sel, col[2], col[1]),
+         ylim=c(0,1), las=2, ylab="information gain")

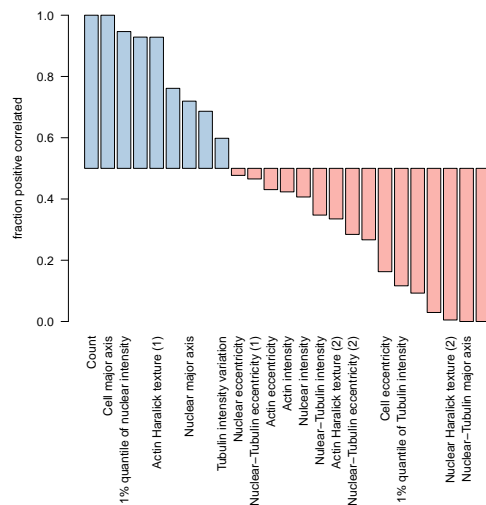
```

Mapping genetic interactions in human cancer cells, Laufer, Fischer et al., 2013



Now we plot the fraction of positive correlation coefficients, which served as a stop criterion.

```
> barplot(stabilitySelection$ratioPositive-0.5,
+         names.arg=HD2013SGI:::humanReadableNames[stabilitySelection$selected],
+         offset=0.5,col=ifelse(Sel, col[2], col[1]),ylim=c(0,1),
+         las=2,ylab="fraction positive correlated")
```



The criteria for feature selection are saved and the features are selected.

```
> save(stabilitySelection, file=file.path("result","data",
+                                       "stabilitySelection.rda"))
> D = D[,,,,stabilitySelection$selected[Sel],,drop=FALSE]
> dimnames(D)[[1]] = TargetAnnotation$Symbol
> dimnames(D)[[3]] = QueryAnnotation$Symbol
> dim(D)

[1] 289  2  20  2  9  2
```

After selecting 9 non-redundant features, the dimension of the data cube is

Mapping genetic interactions in human cancer cells, Laufer, Fischer et al., 2013

	289	target genes
×	2	siRNA target designs
×	20	query genes
×	2	siRNA query designs
×	9	phenotypic features
×	2	biological replicates

The datamatrix is now completely pre-processed and can be saved.

```
> datamatrix = list(D=D, Anno = list(target = TargetAnnotation,  
+                               query = QueryAnnotation,  
+                               phenotype=dimnames(D)[[5]]))  
> save(datamatrix, file=file.path("result","data","datamatrix.rda"))
```

6.6 Pairwise interaction scores

Pairwise interaction scores (π -scores) were estimated using a robust linear fit. The query main effects are lifted such that they equal to the mean of the single knock down measurements of the query genes (target siRNA is a scrambled sequence serving as negative control).

```
> D = datamatrix$D  
> pimatrix = datamatrix  
> pimatrix$D[] = NA_real_  
> mainEffects = list(target = D[,1,,,],  
+                   query = D[1,,,,],  
+                   overall = D[1,1,,,],  
+                   Anno = datamatrix$Anno)  
> for (i in seq_len(dim(D)[2])) {  
+   for (j in seq_len(dim(D)[4])) {  
+     for (k in seq_len(dim(D)[5])) {  
+       for (l in seq_len(dim(D)[6])) {  
+         MP = HD2013SGImaineffects(D[,i,,j,k,l],  
+                               TargetNeg=which(TargetAnnotation$group == "negctrl"))  
+         pimatrix$D[,i,,j,k,l] = MP$pi  
+         mainEffects$target[,i,j,k,l] = MP$targetMainEffect  
+         mainEffects$query[i,,j,k,l] = MP$queryMainEffect  
+         mainEffects$overall[,i,j,k,l] = MP$neg  
+       }  
+     }  
+   }  
+ }  
> save(mainEffects, file=file.path("result","data","mainEffects.rda"))
```

6.7 Statistical testing of interaction terms

For statistical testing, the interaction terms that differed by ≥ 4 times the median standard deviation of the interaction scores were flagged as outliers. Afterwards the interaction terms were tested for significance by a moderated t -test implemented in the R package *limma*.

```
> D = pimatrix$D  
> PADJ = D[pimatrix$Anno$target$group == "sample",,,,1]
```



```

> s = rep(NA_real_, dim(D)[5])
> for (i in seq_len(dim(D)[5])) {
+   Data = D[,,,i,]
+   Data = Data[pimatrix$Anno$target$group == "sample",,,,]
+   d = dim(Data)
+   dim(Data) = c(prod(d[1:4]),prod(d[5]))
+   Data[abs(Data[,1]-Data[,2]) > 4*mad(Data[,1]-Data[,2],center=0.0),]=NA_real_
+
+   s[i] = median(apply(Data,1,sd), na.rm=TRUE)
+   padj = rep(NA_real_, nrow(Data))
+   K = which(apply(!is.na(Data),1,all))
+   fit = eBayes(lmFit(Data[K,]))
+   padj[K] = p.adjust(fit$p.value, method="BH")
+   PADJ[,,,i] = padj
+   cat(sprintf("i=%2d",i),
+       " nr int (1%) = ", sum(padj <= 0.01, na.rm=TRUE)/nrow(Data),
+       " nr int (3%) = ", sum(padj <= 0.03, na.rm=TRUE)/nrow(Data), "\n")
+ }

i= 1 nr int (1%) = 0.0006205674 nr int (3%) = 0.006826241
i= 2 nr int (1%) = 0.02353723 nr int (3%) = 0.07539894
i= 3 nr int (1%) = 0.05110816 nr int (3%) = 0.1007535
i= 4 nr int (1%) = 0.01835106 nr int (3%) = 0.05053191
i= 5 nr int (1%) = 0.009973404 nr int (3%) = 0.03922872
i= 6 nr int (1%) = 0.0322695 nr int (3%) = 0.07632979
i= 7 nr int (1%) = 0.008865248 nr int (3%) = 0.02451241
i= 8 nr int (1%) = 0.002969858 nr int (3%) = 0.01387411
i= 9 nr int (1%) = 0.003147163 nr int (3%) = 0.03843085

```

π -scores for each siRNA pair were summarized over both replicates. Furthermore, interaction scores were divided by their median deviation over all siRNA pairs, to scale them to comparable dynamic range.

```

> PI = pimatrix$D
> PI = PI[pimatrix$Anno$target$group == "sample",,,,]
> Interactions = list(newpiscore = PI,
+   scale = s,
+   padj = PADJ,
+   Anno = pimatrix$Anno)
> Interactions$Anno$target = Interactions$Anno$target[
+   pimatrix$Anno$target$group == "sample",]
> save(Interactions, file=file.path("result","data","Interactions.rda"))

```

7 Example phenotypes and interactions

7.1 Preliminaries

```

> library("HD2013SGI")
> data("Interactions",package="HD2013SGI")

```

Mapping genetic interactions in human cancer cells, Laufer, Fischer et al., 2013

```
> data("mainEffects", package="HD2013SGI")
> dir.create(file.path("result", "Figures"),
+           recursive=TRUE, showWarnings=FALSE)
```

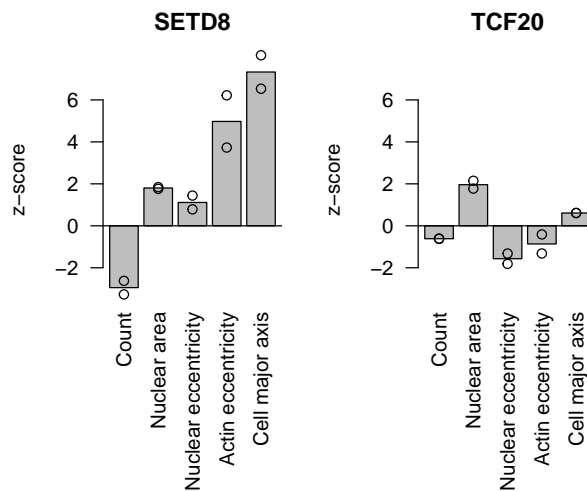
7.2 Examples of single knock down phenotypes

Main effects were first summarized over all four siRNA design pairs and divided by the median deviation to compute a z -score. Bars in the following barplots show the mean of main effects calculated over the two replicates of the screen. Circle symbols represent individual replicate measurements. Main effects for five different phenotypes are plotted for the two genes SETD8 and TCF20.

```
> features = c("count", "nuc.0.s.area", "nuc.0.m.eccentricity",
+             "cell.Bact.m.eccentricity", "cell.act.m.majoraxis")
> ylim = c(-2.947124, 7.329518)
```

```
> HD2013SGI:::plotExampleSingleGeneEffects(gene="SETD8", features, mainEffects, ylim)
```

```
> HD2013SGI:::plotExampleSingleGeneEffects(gene="TCF20", features, mainEffects, ylim)
```



7.3 Example of genetic interactions

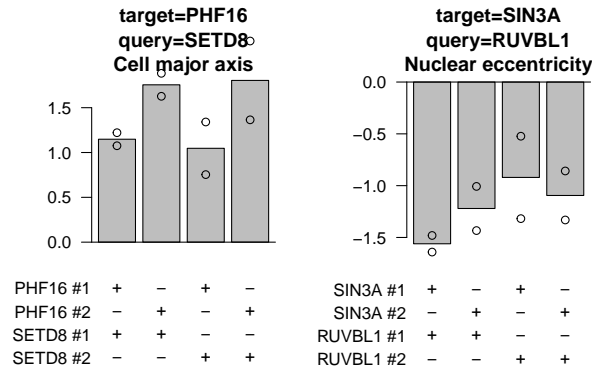
Barcharts for example interactions are plotted.

```
> HD2013SGI:::plotExampleInteractions(feature="cell.act.m.majoraxis",
+                                     target="PHF16", query="SETD8",
+                                     Interactions, mainEffects)
```

```
> HD2013SGI:::plotExampleInteractions(feature="nuc.0.m.eccentricity",
+                                     target="SIN3A", query="RUVBL1",
```

+

Interactions, mainEffects)



7.4 Overlap of interactions

To show the overlap of interactions called in different phenotypes, interactions with an adjusted p -value of ≤ 0.01 were considered.

```
> features = c("nuc.0.s.area", "nuc.0.m.majoraxis",
+             "cell.Bact.m.eccentricity", "cell.act.m.majoraxis")
> SIG = Interactions$padj[, , , , features] <= 0.01
> SIG[is.na(SIG)] = FALSE
```

The 5-dimensional array `SIG` of Boolean values indicating the significant interactions was reshaped to a 2-dimensional table with one column for each feature.

```
> dim(SIG) = c(prod(dim(SIG)[1:4]), dim(SIG)[5])
> row.names(SIG) = sprintf("A%d", seq_len(nrow(SIG)))
> colnames(SIG) = HD2013SGI::humanReadableNames[features]
```

A contingency table was computed considering all gene pairs that interacted in at least one phenotype.

```
> I = which(apply(SIG, 1, any))
> Overlap = table(as.data.frame(SIG[I, ]))
> Overlap

, , Actin eccentricity = FALSE, Cell major axis = FALSE

      Nuclear major axis
Nuclear area FALSE TRUE
FALSE      0    65
TRUE      32    82

, , Actin eccentricity = TRUE, Cell major axis = FALSE

      Nuclear major axis
Nuclear area FALSE TRUE
FALSE     155     6
```

Mapping genetic interactions in human cancer cells, Laufer, Fischer et al., 2013

```

TRUE      1      5
, , Actin eccentricity = FALSE, Cell major axis = TRUE

      Nuclear major axis
Nuclear area FALSE TRUE
FALSE    412     9
TRUE      7     20

, , Actin eccentricity = TRUE, Cell major axis = TRUE

      Nuclear major axis
Nuclear area FALSE TRUE
FALSE     69     4
TRUE      1     9

> save(Overlap, file=file.path("result","Figures","Overlap.rda"))

```

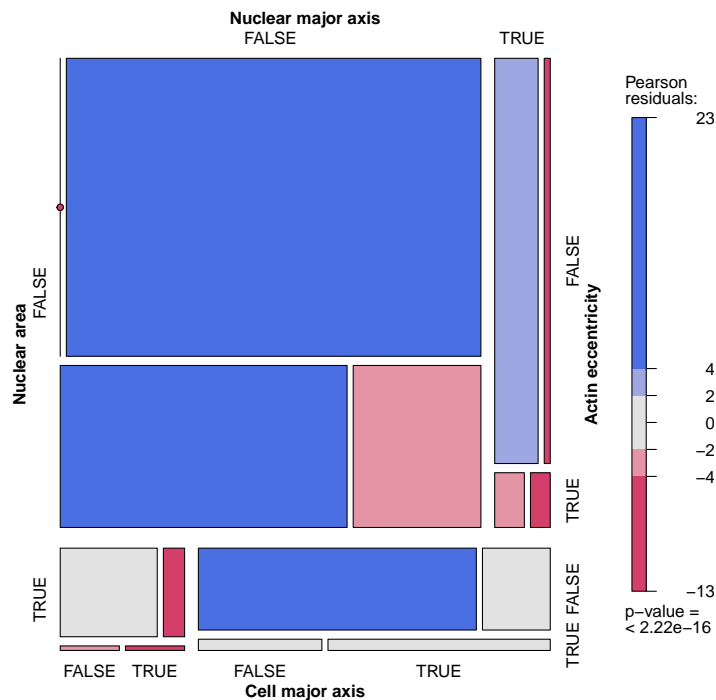
A Venn diagram was generated with a webtool (<http://bioinfogp.cnb.csic.es/tools/venny/index.html>). Lists of identifiers of the significant genes were written to be used with the webtool.

```

> L = apply(SIG, 2, function(x) names(which(x)))
> for (i in seq_along(L)) {
+   writeLines(L[[i]],
+     file.path("result", "Figures", sprintf("interactionlist%d.txt",i)))
+ }

```

In paper, a Venn diagram is shown. An alternative plot where the region areas are proportional to the numbers, is a mosaic plot as shown here.



8 Correlation of interaction profiles for different siRNA designs of the same gene

8.1 Preliminaries

```
> library("HD2013SGI")
> data("Interactions", package="HD2013SGI")
> data("mainEffects", package="HD2013SGI")
> dir.create(file.path("result", "Figures"), recursive=TRUE)
> dir.create(file.path("result", "data"), recursive=TRUE)
```

8.2 Correlation of interaction profiles for different siRNA designs of the same gene

π -scores were summarized over two replicates. Pearson correlation coefficients were computed for interaction profiles for each pair of siRNA and saved in the matrix `C`.

```
> PI = Interactions$piscore
> for (k in seq_len(dim(PI)[5])) {
+   PI[,,,,k] = PI[,,,,k] / Interactions$scale[k]
+ }
> PI = (PI[,,,,1]+PI[,,,,2]) / 2
> PI[is.na(Interactions$padj)] = NA_real_
> PI2 = PI
> dim(PI2) = c(prod(dim(PI)[1:2]),prod(dim(PI)[3:5]))
> C = cor(t(PI2),use="pairwise.complete")
```

Correlation coefficients for siRNA pairs, where both siRNA targeted the same gene, were extracted.

```
> IDX = matrix(NA_integer_, nr=dim(Interactions$piscore)[1],nc=2)
> IDX[,1] = seq_len(dim(Interactions$piscore)[1])
> IDX[,2] = IDX[,1] + dim(Interactions$piscore)[1]
> cc = C[IDX]
```

Next, we counted the number of significant interactions per target gene to select genes that showed a strong interaction profile.

```
> PI3 = PI
> dim(PI3) = c(dim(PI)[1],dim(PI)[2],prod(dim(PI)[3:5]))
> PI3[abs(PI3) < 5] = NA_real_
> S = sign(PI3)
> nrOfInteractionsPerTarget = apply(!is.na(S[,1,]) == S[,2,]),1,sum,na.rm=TRUE)
```

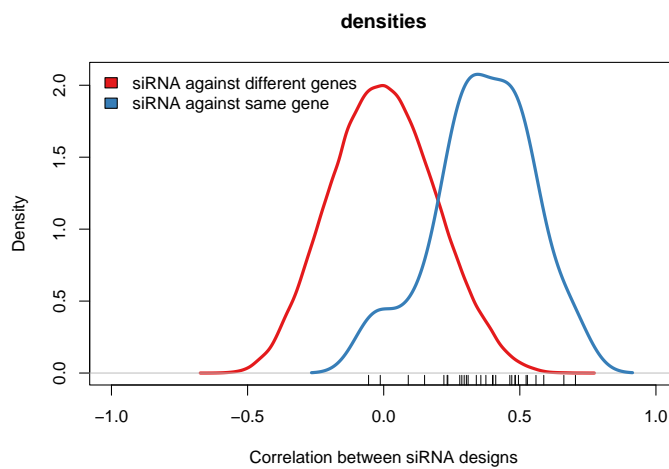
We plot the density of correlation coefficients of interaction profiles between siRNAs against different genes and between siRNAs targeting the same gene.

```
> differentGenes = upper.tri(C)
> differentGenes[IDX] = FALSE
> differentGenes[IDX[,2:1]] = FALSE
```

Mapping genetic interactions in human cancer cells, Laufer, Fischer et al., 2013

```
> sel = which(nrOfInteractionsPerTarget >= 5)

> multidensity(list(againstDifferentGenes = C[differentGenes],
+                 againstSameGene = cc[sel]),
+             legend = list(
+               x = "topleft",
+               legend = c("siRNA against different genes",
+                           "siRNA against same gene"),
+               fill = brewer.pal(9,"Set1")[1:2],bty="n"),
+             xlim=c(-1,1),xlab="Correlation between siRNA designs",lwd=3)
> rug(cc[sel])
```



Save the number of interactions per target gene.

```
> save(nrOfInteractionsPerTarget,
+      file=file.path("result", "data", "nrOfInteractionsPerTarget.rda"))
```

9 Heatmaps of interaction profiles

9.1 Preliminaries

```
> library("HD2013SGI")
> data("Interactions", package="HD2013SGI")
> data("mainEffects", package="HD2013SGI")
> data("nrOfInteractionsPerTarget", package="HD2013SGI")
> dir.create(file.path("result", "Figures"), recursive=TRUE)
```

9.2 Heatmap of all siRNA profiles

π -scores were normalized per feature by dividing with the median deviation between two replicates. For each siRNA-pair they were summarized over two replicates.

Mapping genetic interactions in human cancer cells, Laufer, Fischer et al., 2013

```
> PI = Interactions$piscore
> for (k in seq_len(dim(PI)[5])) {
+   PI[,,,,k,] = PI[,,,,k,] / Interactions$scale[k]
+ }
> PI = (PI[,,,,1]+PI[,,,,2]) / 2
```

The 5-dimensional array PI was reshaped to a 3-dimensional array by flattening the dimensions of target genes and siRNA designs as well as query genes and their respective siRNA designs.

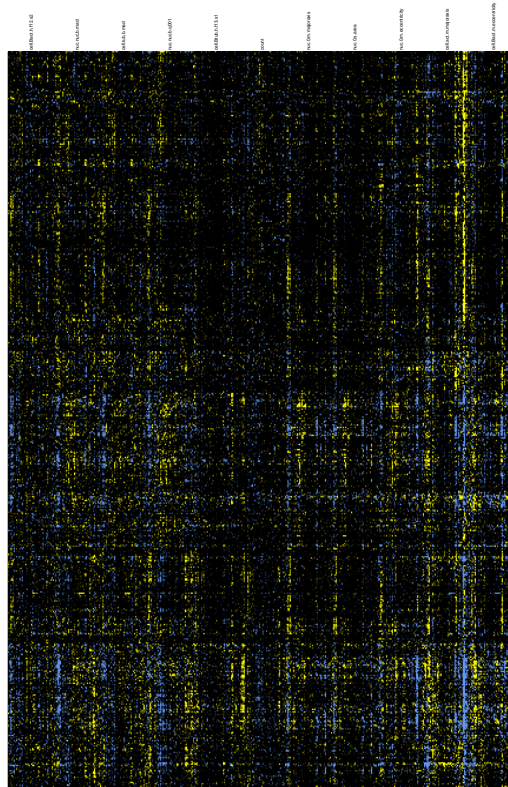
```
> dim(PI) = c(prod(dim(PI)[1:2]),prod(dim(PI)[3:4]),dim(PI)[5])
> dimnames(PI) = list(
+   sprintf("%s_%d",rep(Interactions$Anno$target$Symbol,times=2),
+     rep(seq_len(dim(Interactions$piscore)[2]),
+       each=dim(Interactions$piscore)[1])),
+   sprintf("%s_%d",rep(Interactions$Anno$query$Symbol,times=2),
+     rep(seq_len(dim(Interactions$piscore)[4]),
+       each=dim(Interactions$piscore)[3])),
+   rep(dimnames(Interactions$piscore)[[5]]))
```

After this step, the dimension of the array PI was 564 target siRNA \times 40 query siRNA \times 11 phenotypic features. The color scale for interaction scores was limited to the range $[-6, \dots, 6]$. Interaction scores between -2 and 2 are colored black.

```
> cuts = c(-Inf,
+   seq(-6, -2, length.out=(length(HD2013SGI:::colBY)-3)/2),
+   0,
+   seq( 2,  6, length.out=(length(HD2013SGI:::colBY)-3)/2),
+   +Inf)
```

A heatmap of π -scores for all siRNA pairs is plotted.

```
> I = HD2013SGIorderDim(PI,1)$order
> J = HD2013SGIorderDim(PI,2)$order
> K = HD2013SGIorderDim(PI,3)$order
> HD2013SGIHeatmapHuman(x=PI[I,J,K],cuts=cuts,col=HD2013SGI:::colBY,
+   colnames=TRUE,mcol=10,cexcol=0.5,mrow=0)
```



9.3 Heatmap of best correlating siRNA profiles

π -scores were normalized per feature by dividing by the median deviation between two replicates. For each gene pair π -scores were summarized over the two replicates and the 2×2 siRNA designs.

```
> PI = Interactions$piscore
> for (k in seq_len(dim(PI)[5])) {
+   PI[, , , k, ] = PI[, , , k, ] / Interactions$scale[k]
+ }
> PI = (PI[, , , , 1] + PI[, , , , 2]) / 2
> PI = (PI[, 1, , 1, ] + PI[, 2, , 1, ] + PI[, 1, , 2, ] + PI[, 2, , 2, ])/4
```

Target genes with a minimum of 5 π -scores with $|\pi_{ij}| \geq 5$ were selected.

```
> sel = which(nrOfInteractionsPerTarget >= 5)
> PI = PI[sel, , ]
```

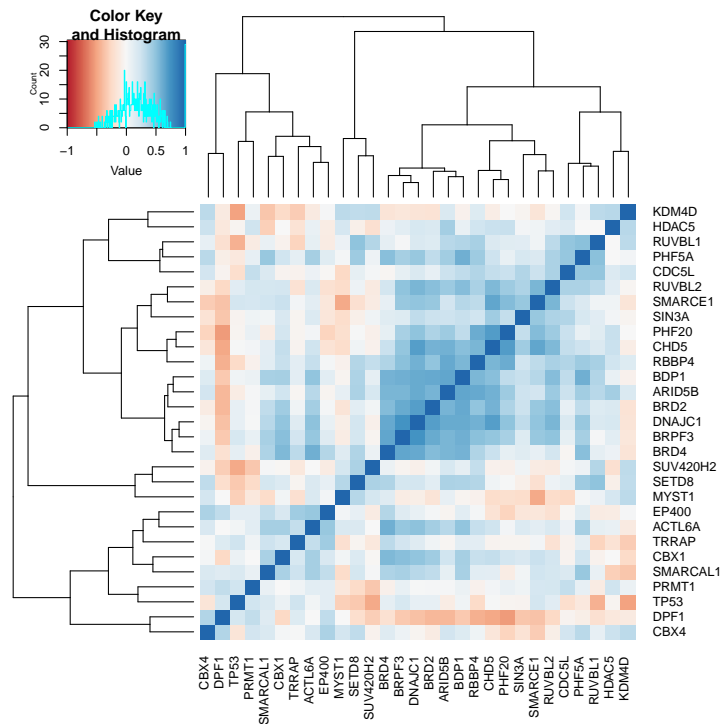
Pearson correlation coefficients were computed comparing interaction profiles between all gene pairs.

```
> hcAll = HD2013SGIorderDim(PI, 1)
> dim(PI) = c(dim(PI)[1], prod(dim(PI)[2:3]))
> dimnames(PI)[[1]] = Interactions$Anno$target$Symbol[sel]
> C2 = cor(t(PI), use="pairwise.complete")
```

The heatmap of correlation coefficients is plotted.

Mapping genetic interactions in human cancer cells, Laufer, Fischer et al., 2013

```
> dd = as.dendrogram(hcAll)
> heatmap.2(C2, col=colorRampPalette(brewer.pal(9,"RdBu"))(255),
+           breaks=seq(-1,1,length.out=256),
+           trace="none", Rowv=dd, Colv=dd)
```



10 Simulation of small cell number data

10.1 Preliminaries

```
> library("HD2013SGI")
> dir.create(file.path("result", "Figures"), recursive=TRUE, showWarnings=FALSE)
> data("featuresPerWell", package="HD2013SGI")
> data("TargetAnnotation", package="HD2013SGI")
> data("QueryAnnotation", package="HD2013SGI")
> data("datamatrix", package="HD2013SGI")
```

10.2 Convert data from plate order to SGI-array

The simulation of a genetic interaction experiment with smaller cell numbers followed the scripts in Sections 5 and 6.

First, the plate barcodes were parsed.

```
> plates = featuresPerWell$Anno[seq(1, nrow(featuresPerWell$Anno),
+                                 by=NFIELD*NCOL*NROW), "plate"]
> PlateAnnotation = HD2013SGI:::parsePlateBarcodes(plates)
```

Mapping genetic interactions in human cancer cells, Laufer, Fischer et al., 2013

The names of all query genes were extracted.

```
> S = which(PlateAnnotation$queryGroup=="sample")
> tdnames = unique(PlateAnnotation$targetDesign[S])
> qnames = unique(PlateAnnotation$queryGene[S])
> qdnames = unique(PlateAnnotation$queryDesign[S])
> repnames = unique(PlateAnnotation$replicate[S])
```

The data were converted from the screen plate layout to a multi-dimensional array.

```
> D = array(0.0, dim=c(field=NFIELD,col=NCOL,row=NROW,
+ features=dim(featuresPerWell$data)[2],
+ targetDesign=length(tdnames),
+ query=length(qnames),queryDesign=length(qdnames),
+ replicate=length(repnames)))
> dimnames(D) = list(field=seq_len(NFIELD),
+ col=seq_len(NCOL),row=LETTERS[seq_len(NROW)+1],
+ features=dimnames(featuresPerWell$data)[[2]],
+ targetDesign=tdnames,
+ queryGene=qnames,queryDesign=qdnames,replicate=repnames)
> z=0
> for (td in tdnames) {
+   for (q in qnames) {
+     for (qd in qdnames) {
+       for (r in repnames) {
+         plate = PlateAnnotation$plate[
+           which((PlateAnnotation$targetDesign == td) &
+             (PlateAnnotation$queryGene == q) &
+             (PlateAnnotation$queryDesign == qd) &
+             (PlateAnnotation$replicate == r) ) ]
+         z=z+1
+         I = which(featuresPerWell$Anno$plate == plate)
+         D[,,,td,q,qd,r] = as.vector(featuresPerWell$data[I,])
+       }
+     }
+   }
+ }
> D[is.na(D)] = 0.0
```

The data were summarized by their mean value

1. considering only one imaging field per well,
2. considering two imaging fields per well, and
3. considering all four imaging fields per well.

```
> Dsub1 = D[1,,,,,,,,]
> Dsub2 = (D[1,,,,,,,,] + D[2,,,,,,,,])/2
> D = (D[1,,,,,,,,] + D[2,,,,,,,,] + D[3,,,,,,,,] + D[4,,,,,,,,])/4
> D = aperm(D,c(1,2,4,5,6,3,7))
> dn = dimnames(D)
```

Mapping genetic interactions in human cancer cells, Laufer, Fischer et al., 2013

```
> dim(D) = c(prod(dim(D)[1:2]),dim(D)[3:7])
> dimnames(D) = c(list(targetGene =
+                 sprintf("%s%d",rep(LETTERS[seq_len(NROW)+1],each=NCOL),
+                 rep(seq_len(NCOL),times=NROW))),
+                 dn[3:7])
> Dsub1 = aperm(Dsub1,c(1,2,4,5,6,3,7))
> dim(Dsub1) = c(prod(dim(Dsub1)[1:2]),dim(Dsub1)[3:7])
> dimnames(Dsub1) = dimnames(D)
> Dsub2 = aperm(Dsub2,c(1,2,4,5,6,3,7))
> dim(Dsub2) = c(prod(dim(Dsub2)[1:2]),dim(Dsub2)[3:7])
> dimnames(Dsub2) = dimnames(D)
> datamatrixfullsub = list(Dsub1 = Dsub1, Dsub2 = Dsub2, Dsub4 = D)
```

Get indices for different sets of experiments (samples, controls, ...).

```
> IndexSAMPLE = which(TargetAnnotation$group == "sample")
> IndexCTRL = which(TargetAnnotation$group == "SingleKDctrl")
> IndexNEG = which(TargetAnnotation$group == "negctrl")
> IndexSAMPLENEG = c(IndexSAMPLE, IndexNEG)
```

Set the color value for controls.

```
> colCTRL = rep("gray", nrow(TargetAnnotation))
> colCTRL[TargetAnnotation$group == "SingleKDctrl"] = "royalblue"
> colCTRL[TargetAnnotation$group == "negctrl"] = "red"
```

10.3 Transform features and screen normalization

A function for a generalized log transformation.

```
> logtrafo <- function(x,c) {
+   log2((x+sqrt(x^2+c^2))/2)
+ }
```

Transform all features with a generalized log transformation. A 3 percent quantile was used as an additive constant in the glog transformation. The same constant was used for the **glog**-transformation of all three data sets.

```
> for (i in seq_len(dim(D)[5])) {
+   m = quantile(D[,,,,i],probs=0.03,na.rm=TRUE)
+   D[,,,,i] = logtrafo(D[,,,,i],m)
+   Dsub1[,,,,i] = logtrafo(Dsub1[,,,,i],m)
+   Dsub2[,,,,i] = logtrafo(Dsub2[,,,,i],m)
+ }
```

Normalize median per plate and feature to compensate for global differences between replicates and siRNA designs.

```
> normalize <- function(D) {
+   M = apply(D,c(2:6),median,na.rm=TRUE)
+   M2 = apply(M, c(2,4), mean)
+   M2 = rep(M2, times=8)
```

Mapping genetic interactions in human cancer cells, Laufer, Fischer et al., 2013

```
+ dim(M2) = dim(M)[c(2,4,1,3,5)]
+ M2 = aperm(M2,c(3,1,4,2,5))
+ M = M - M2
+ M = rep(M[, each=dim(D)[1]]
+ dim(M) = dim(D)
+ D = D - M
+ D
+ }
> D <- normalize(D)
> Dsub1 <- normalize(Dsub1)
> Dsub2 <- normalize(Dsub2)
```

Subtract median and divide by median deviation per feature.

```
> for (i in 1:dim(D)[5]) {
+ D[,,,,i] = (D[,,,,i] - median(D[,,,,i],na.rm=TRUE)) /
+ mad(D[,,,,i],na.rm=TRUE)
+ }
> for (i in 1:dim(Dsub1)[5]) {
+ Dsub1[,,,,i] = (Dsub1[,,,,i] - median(Dsub1[,,,,i],na.rm=TRUE)) /
+ mad(Dsub1[,,,,i],na.rm=TRUE)
+ }
> for (i in 1:dim(Dsub2)[5]) {
+ Dsub2[,,,,i] = (Dsub2[,,,,i] - median(Dsub2[,,,,i],na.rm=TRUE)) /
+ mad(Dsub2[,,,,i],na.rm=TRUE)
+ }
```

10.4 Quality control of features

The dimension of the data cube before quality control is: $345 \times 2 \times 20 \times 2 \times 353 \times 2$ (targets \times siRNA designs \times queries \times designs \times features \times replicates). Take the mean over all four siRNA design pairs and compute for each feature the Pearson correlation between first and second replicate.

```
> C = rep(NA_real_, dim(D)[5])
> D2 = (D[,1,,1,,] + D[,2,,1,,] + D[,1,,2,,] + D[,2,,2,,]) / 4
> D2sub1 = (Dsub1[,1,,1,,] + Dsub1[,2,,1,,] + Dsub1[,1,,2,,] + Dsub1[,2,,2,,]) / 4
> D2sub2 = (Dsub2[,1,,1,,] + Dsub2[,2,,1,,] + Dsub2[,1,,2,,] + Dsub2[,2,,2,,]) / 4
> for (i in 1:dim(D)[5]) {
+ C[i] = cor(as.vector(D2[IndexSAMPLE,,i,1]), as.vector(D2[IndexSAMPLE,,i,2]))
+ }
```

Select all features with a correlation of at least 0.6. The number of features passing quality control is 227 out of 353. The same features as in the main analysis were selected in all three simulated cases.

```
> I = which(C >= 0.6)
> D = D[,,,,I,,drop=FALSE]
> Dsub1 = Dsub1[,,,,I,,drop=FALSE]
> Dsub2 = Dsub2[,,,,I,,drop=FALSE]
> dim(D)
```

targetDesign	query	queryDesign	features	replicate
345	2	20	227	2

The dimension of the data cube is now: $345 \times 2 \times 20 \times 2 \times 227 \times 2$ (targets \times siRNA designs \times queries \times designs \times features \times replicates).

10.5 Quality control of siRNA designs

For each target siRNA the phenotypic profiles were summarized over two query siRNA and two replicates.

```
> D1 = (D[,,,1,,1] + D[,,,1,,2] + D[,,,2,,1] + D[,,,2,,2])/4
```

For each target gene the Pearson correlation coefficient was computed for phenotypic profiles between the two siRNA designs separately for each feature. The mean of correlation coefficients over all features is reported for each target gene.

```
> Cdesign1 = rep(NA_real_,dim(D)[1])
> for (k in 1:dim(D)[5]) {
+   for (i in 1:dim(D)[1]) {
+     Cdesign1[i] = cor(as.vector(D1[i,1,,k]),as.vector(D1[i,2,,k]))
+   }
+   if ( k == 1) {
+     Cdesign1all = Cdesign1
+   } else {
+     Cdesign1all = Cdesign1all + Cdesign1
+   }
+ }
> Cdesign1all = Cdesign1all / dim(D)[5]
```

All gene with a correlation of the phenotypic profiles of at least 0.7 are selected for further analysis. The number of target genes passing quality control is 282 out of 323. Additionally, 7 negative control target siRNAs are selected. The same target genes as in the main analysis are selected for all three simulated cases.

```
> I = IndexSAMPLE[Cdesign1all[IndexSAMPLE] >= 0.7]
> I = c(I, IndexNEG)
> D = D[I,,,,,drop=FALSE]
> Dsub1 = Dsub1[I,,,,,drop=FALSE]
> Dsub2 = Dsub2[I,,,,,drop=FALSE]
> TargetAnnotation = TargetAnnotation[I,]
```

The dimension of the data cube is now: $289 \times 2 \times 20 \times 2 \times 227 \times 2$ (targets \times siRNA designs \times queries \times designs \times features \times replicates).

10.6 Selection of non-redundant features

```
> data(stabilitySelection, package="HD2013SGI")
> Sel = stabilitySelection$ratioPositive >= 0.5
```

Mapping genetic interactions in human cancer cells, Laufer, Fischer et al., 2013

A set of 11 features was considered to contain non-redundant information. The criteria for feature selection are saved and the features are selected. The same features as in the main analysis were selected for all three simulated datasets.

```
> D = D[,,,,stabilitySelection$selected[Sel],,drop=FALSE]
> dimnames(D)[[1]] = TargetAnnotation$Symbol
> dimnames(D)[[3]] = QueryAnnotation$Symbol
> Dsub1 = Dsub1[,,,,stabilitySelection$selected[Sel],,drop=FALSE]
> Dsub2 = Dsub2[,,,,stabilitySelection$selected[Sel],,drop=FALSE]
> dimnames(Dsub1) = dimnames(D)
> dimnames(Dsub2) = dimnames(D)
```

After selecting 11 features, the dimension of the data cube is now: $289 \times 2 \times 20 \times 2 \times 11 \times 2$ (targets \times siRNA designs \times queries \times designs \times features \times replicates).

10.7 Pairwise interaction scores

Pairwise interaction scores (π -scores) are estimated using a robust linear fit. The query main effects are lifted such that they equal to the mean of the single knock down measurements of the query genes (target siRNA is a scrambled sequence serving as negative control).

```
> getInteractions <- function(D) {
+   pimatrix = datamatrix
+   pimatrix$D[] = NA_real_
+   mainEffects = list(target = D[, , 1, , ],
+                       query = D[1, , , , ],
+                       overall = D[1, , 1, , ],
+                       Anno = datamatrix$Anno)
+
+   for (i in 1:2) {
+     for (j in 1:2) {
+       for (k in 1:dim(D)[5]) {
+         for (l in 1:2) {
+           MP = HD2013SGImaineffects(D[, i, , j, k, l],
+                                     TargetNeg=which(TargetAnnotation$group == "negctrl"))
+           pimatrix$D[, i, , j, k, l] = MP$pi
+           mainEffects$target[, i, j, k, l] = MP$targetMainEffect
+           mainEffects$query[i, , j, k, l] = MP$queryMainEffect
+           mainEffects$overall[i, j, k, l] = MP$neg
+         }
+       }
+     }
+   }
+   D = pimatrix$D
+   PADJ = D[pimatrix$Anno$target$group == "sample", , , , 1]
+   s = rep(NA_real_, dim(D)[5])
+   for (i in 1:dim(D)[5]) {
+     Data = D[, , , i, ]
+     Data = Data[pimatrix$Anno$target$group == "sample", , , ]
+     d = dim(Data)
+     dim(Data) = c(prod(d[1:4]), prod(d[5]))
+     Data[abs(Data[, 1] - Data[, 2]) >
```

Mapping genetic interactions in human cancer cells, Laufer, Fischer et al., 2013

```

+       4*mad(Data[,1]-Data[,2],center=0.0),] = NA_real_
+
+     s[i] = median(apply(Data,1,sd), na.rm=TRUE)
+     padj = rep(NA_real_, nrow(Data))
+     K = which(apply(!is.na(Data),1,all))
+     fit = eBayes(lmFit(Data[K,]))
+     padj[K] = p.adjust(fit$p.value, method="BH")
+     PADJ[,,,i] = padj
+     cat("i=",i," nr int (1%) = ",sum(padj <= 0.01,na.rm=TRUE)/nrow(Data),
+         " nr int (3%) = ",sum(padj <= 0.03,na.rm=TRUE)/nrow(Data),"\n")
+   }
+   PI = pimatrix$D
+   PI = PI[pimatrix$Anno$target$group == "sample",,,]
+   Interactions = list(piscore = PI,
+                       scale = s,
+                       padj = PADJ,
+                       Anno = pimatrix$Anno)
+   Interactions$Anno$target = Interactions$Anno$target[
+     pimatrix$Anno$target$group == "sample",]
+   Interactions
+ }
> InteractionsSub4 = getInteractions(D)

i= 1 nr int (1%) = 0.0006205674 nr int (3%) = 0.006826241
i= 2 nr int (1%) = 0.02353723 nr int (3%) = 0.07539894
i= 3 nr int (1%) = 0.05110816 nr int (3%) = 0.1007535
i= 4 nr int (1%) = 0.06117021 nr int (3%) = 0.1077128
i= 5 nr int (1%) = 0.009973404 nr int (3%) = 0.03922872
i= 6 nr int (1%) = 0.008865248 nr int (3%) = 0.02451241
i= 7 nr int (1%) = 0.05110816 nr int (3%) = 0.1058067
i= 8 nr int (1%) = 0.00695922 nr int (3%) = 0.02234043
i= 9 nr int (1%) = 0.005673759 nr int (3%) = 0.01710993
i= 10 nr int (1%) = 0.01108156 nr int (3%) = 0.0454344
i= 11 nr int (1%) = 0.003147163 nr int (3%) = 0.03843085

> InteractionsSub1 = getInteractions(Dsub1)

i= 1 nr int (1%) = 0 nr int (3%) = 0.0005319149
i= 2 nr int (1%) = 0.008510638 nr int (3%) = 0.02832447
i= 3 nr int (1%) = 0.01023936 nr int (3%) = 0.02593085
i= 4 nr int (1%) = 0.008998227 nr int (3%) = 0.0206117
i= 5 nr int (1%) = 0.0006205674 nr int (3%) = 0.004166667
i= 6 nr int (1%) = 0.0006648936 nr int (3%) = 0.003679078
i= 7 nr int (1%) = 0.009219858 nr int (3%) = 0.0266844
i= 8 nr int (1%) = 0 nr int (3%) = 0.000177305
i= 9 nr int (1%) = 0 nr int (3%) = 0.0002216312
i= 10 nr int (1%) = 0 nr int (3%) = 0
i= 11 nr int (1%) = 0.007047872 nr int (3%) = 0.025

> InteractionsSub2 = getInteractions(Dsub2)

i= 1 nr int (1%) = 0.0009308511 nr int (3%) = 0.004964539
i= 2 nr int (1%) = 0.01830674 nr int (3%) = 0.05771277

```

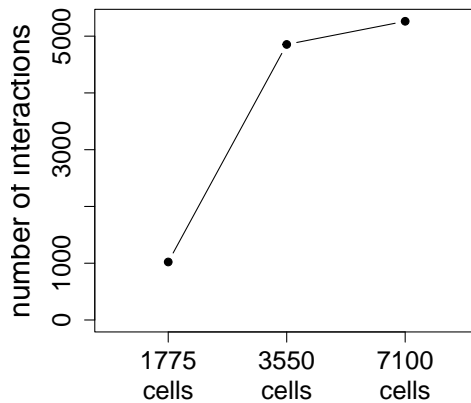
Mapping genetic interactions in human cancer cells, Laufer, Fischer et al., 2013

```
i= 3 nr int (1%) = 0.06387411 nr int (3%) = 0.09968972
i= 4 nr int (1%) = 0.02814716 nr int (3%) = 0.06023936
i= 5 nr int (1%) = 0.00483156 nr int (3%) = 0.02132092
i= 6 nr int (1%) = 0.00625 nr int (3%) = 0.01586879
i= 7 nr int (1%) = 0.05820035 nr int (3%) = 0.09933511
i= 8 nr int (1%) = 0.008244681 nr int (3%) = 0.02109929
i= 9 nr int (1%) = 0.02039007 nr int (3%) = 0.03085106
i= 10 nr int (1%) = 0 nr int (3%) = 0.009042553
i= 11 nr int (1%) = 0.005984043 nr int (3%) = 0.0366578
```

The number of significantly interacting siRNA pairs is plotted.

```
> field1 = sum(InteractionsSub1$padj <= 0.01, na.rm=TRUE)
> field2 = sum(InteractionsSub2$padj <= 0.01, na.rm=TRUE)
> field4 = sum(InteractionsSub4$padj <= 0.01, na.rm=TRUE)
```

```
> plot(c(field1, field2, field4), type="b", pch=19,
+      ylab="number of interactions", xlab="",
+      xlim=c(0.5, 3.5), ylim=c(0.0, field4),
+      main="", xaxt="n", cex.lab=1.75, cex.axis=1.5)
> axis(side=1, at=1:3, labels=c("", "", ""))
> axis(side=1, at=1:3, labels=c("1775\ncells", "3550\ncells", "7100\ncells"),
+      line=1.5, lwd=0, cex.axis=1.5)
```



11 Distribution of positive and negative interactions

11.1 Preliminaries

```
> library("HD2013SGI")
> data("Interactions", package="HD2013SGI")
> data("mainEffects", package="HD2013SGI")
> data("nrOfInteractionsPerTarget", package="HD2013SGI")
```


Mapping genetic interactions in human cancer cells, Laufer, Fischer et al., 2013

```
> dir.create(file.path("result", "Figures"), showWarnings=FALSE, recursive=TRUE)
```

11.2 Distribution of interactions

The mean of the interaction scores was taken over the two replicates.

```
> PI = Interactions$piscore
> PI = (PI[,,,,1]+PI[,,,,2]) / 2
```

The number of positive and negative interactions for each phenotypic feature was counted. Only significant interactions (FDR ≤ 0.01) were considered.

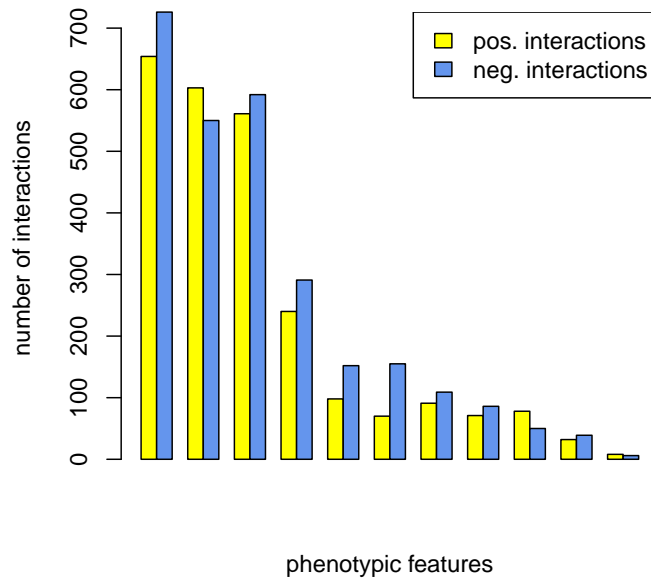
```
> npos = rep(NA_integer_, dim(PI)[5])
> nneg = rep(NA_integer_, dim(PI)[5])
> for (i in seq_len(dim(PI)[5])) {
+   I = which(Interactions$padj[,,,,i] <= 0.01)
+   pi = (PI[,,,,i])[I]
+   npos[i] = sum(pi >= 0)
+   nneg[i] = sum(pi < 0)
+ }
```

`npos` (`nneg`) contains the number of positive (negative) genetic interactions per phenotypic feature. The features were sorted by the total number (positive and negative) interactions starting with the largest number.

```
> I = order(-(npos+nneg))
> npos = npos[I]
> nneg = nneg[I]
```

A barchart was plotted showing the number of positive and negative interactions.

```
> barplot(rbind(npos, nneg), beside=TRUE,
+         col=HD2013SGI:::Colors[c(3,1)],
+         xlab="phenotypic features", ylab="number of interactions")
> legend("topright", legend=c("pos. interactions", "neg. interactions"),
+        fill=HD2013SGI:::Colors[c(3,1)])
```



12 Scatter plots between phenotypes

12.1 Preliminaries

```
> library("HD2013SGI")
> data("datamatrix", package="HD2013SGI")
> dir.create(file.path("result", "Figures"), showWarnings=FALSE, recursive=TRUE)
```

12.2 Scatter plots of selected features

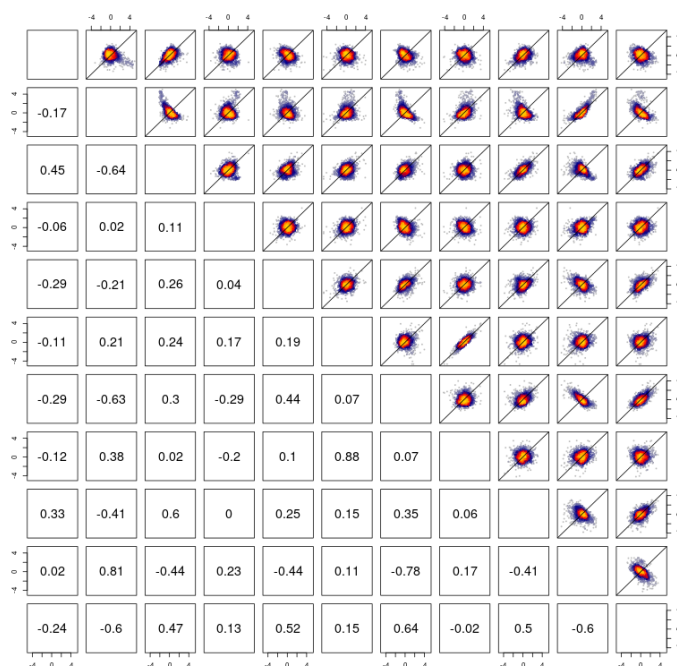
The 6-dimensional array of log-transformed features is reshaped in a 2-dimensional matrix with columns for each selected feature.

```
> D = datamatrix$D
> D = aperm(D, c(1,2,3,4,6,5))
> dim(D) = c(prod(dim(D)[1:5]), dim(D)[6])
```

Scatter plots of the selected features are plotted using 1000 randomly selected double knock-down experiments.

```
> set.seed(712608)
> S = sample(dim(D)[1], 1000)
```

```
> heatpairs(D[S,], cor.cex = 1.8, pch=20, main="")
```



13 Screen plots

13.1 Preliminaries

```
> library("HD2013SGI")
> data("Interactions", package="HD2013SGI")
> dir.create(file.path("result", "Figures"),
+           recursive=TRUE, showWarnings=FALSE)
```

13.2 Screen plots

The π -scores for the feature `cell.act.m.majoraxis` were mapped back to the screen plate layout.

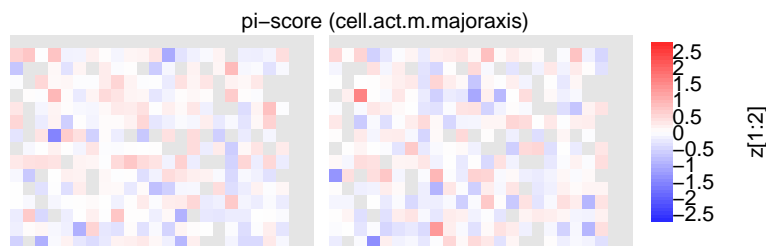
```
> F = "cell.act.m.majoraxis"
> EmptyPlate = rep(NA_real_, 24*16)
> names(EmptyPlate) = sprintf("%s%d", rep(LETTERS[1:16], each=24),
+                             rep(1:24, times=16))
> z = list()
> for (Rep in seq_len(dim(Interactions$pscore)[6])) {
+   for (Q in seq_len(dim(Interactions$pscore)[3])) {
+     for (QD in seq_len(dim(Interactions$pscore)[4])) {
+       for (TD in seq_len(dim(Interactions$pscore)[2])) {
+         Plate = EmptyPlate
+         Plate[Interactions$Anno$target$Well] =
+           Interactions$pscore[, TD, Q, QD, F, Rep]
```

Mapping genetic interactions in human cancer cells, Laufer, Fischer et al., 2013

```
+      z[[sprintf("Q%d_td%d_qd%d_r%d", Q, TD, QD, Rep)]] = Plate
+    }
+  }
+ }
+ }
```

Screen plots of two plates are plotted.

```
> plotScreen(z[1:2], ncol=2L, na.fill="gray90",
+           main="pi-score (cell.act.m.majoraxis)",
+           zrange=c(-3,3), do.names=FALSE)
```



14 Main result table

14.1 Preliminaries

```
> library("HD2013SGI")
> data("Interactions", package="HD2013SGI")
> dir.create(file.path("result", "Tables"),
+           recursive=TRUE, showWarnings=FALSE)
```

14.2 Main table of interaction scores

The mean of the interaction scores is taken over the two replicates.

```
> PI = Interactions$piscore
> PI = (PI[,,,,1] + PI[,,,,2])/2
> PADJ = Interactions$padj
> PI[is.na(PADJ)] = NA
```

The 5-dimensional arrays of π -scores and adjusted p-values are reshaped to a 2-dimensional matrix with one column per phenotypic feature.

```
> dim(PI) = c(prod(dim(PI)[1:4]), dim(PI)[5])
> dim(PADJ) = c(prod(dim(PADJ)[1:4]), dim(PADJ)[5])
```

The two matrices are merged in a way such that π -scores and adjusted p-values are interlaced and the two columns per features are next to each other.

```
> V = cbind(PI, PADJ)
> V = V[, rep(seq_len(dim(PI)[2]), each=2)+rep(c(0, dim(PI)[2]), times=dim(PI)[2])]
```

Mapping genetic interactions in human cancer cells, Laufer, Fischer et al., 2013

```
> colnames(V) = sprintf("%s.%s", rep(c("pi-score", "padj"), times=dim(PI)[2]),
+                       rep(HD2013SGI::humanReadableNames[ Interactions$Anno$phenotype ],
+                           each=2))
```

Annotation of the target and query gene names and the index of siRNA design are added to the table. The table is written to a text file.

```
> target =      rep(Interactions$Anno$target$Symbol,
+                  times=prod(dim(Interactions$piscore)[c(2,3,4)]))
> targetDesign = rep(rep(c("#1", "#2"),
+                       times=prod(dim(Interactions$piscore)[c(3,4)])),
+                   each=dim(Interactions$piscore)[1])
> query =      rep(rep(Interactions$Anno$query$Symbol,
+                    times=dim(Interactions$piscore)[4]),
+                 each=prod(dim(Interactions$piscore)[c(1,2)]))
> queryDesign = rep(c("#1", "#2"),
+                  each=prod(dim(Interactions$piscore)[c(1,2,3)]))
> df = data.frame(targetGene=target, targetDesign = targetDesign,
+                 queryGene=query, queryDesign=queryDesign,
+                 V)
> write.table(df, file=file.path("result", "Tables", "interactions.txt"), sep="\t",
+            row.names=FALSE, quote=FALSE)
```

15 Session info

Here is the output of `sessionInfo` on the system on which this document was compiled:

```
> toLatex(sessionInfo())
```

- R Under development (unstable) (2023-10-22 r85388), x86_64-pc-linux-gnu
- Locale: LC_CTYPE=en_US.UTF-8, LC_NUMERIC=C, LC_TIME=en_GB, LC_COLLATE=C, LC_MONETARY=en_US.UTF-8, LC_MESSAGES=en_US.UTF-8, LC_PAPER=en_US.UTF-8, LC_NAME=C, LC_ADDRESS=C, LC_TELEPHONE=C, LC_MEASUREMENT=en_US.UTF-8, LC_IDENTIFICATION=C
- Time zone: America/New_York
- TZcode source: system (glibc)
- Running under: Ubuntu 22.04.3 LTS
- Matrix products: default
- BLAS: /home/biocbuild/bbs-3.19-bioc/R/lib/libRblas.so
- LAPACK: /usr/lib/x86_64-linux-gnu/lapack/liblapack.so.3.10.0
- Base packages: base, datasets, grDevices, graphics, grid, methods, stats, stats4, utils
- Other packages: AnnotationDbi 1.65.0, Biobase 2.63.0, BiocGenerics 0.49.0, EBImage 4.45.0, HD2013SGI 1.43.0, IRanges 2.37.0, LSD 4.1-0, RColorBrewer 1.1-3, S4Vectors 0.41.0, XML 3.99-0.14, annotate 1.81.0, geneplotter 1.81.0, gplots 3.1.3, lattice 0.22-5, limma 3.59.0, splots 1.69.0, vcd 1.4-11

- Loaded via a namespace (and not attached): BiocManager 1.30.22, BiocStyle 2.31.0, Biostrings 2.71.1, DBI 1.1.3, GenomeInfoDb 1.39.0, GenomeInfoDbData 1.2.11, KEGGREST 1.43.0, KernSmooth 2.23-22, MASS 7.3-60.1, R6 2.5.1, RCurl 1.98-1.12, RSQLite 2.3.1, XVector 0.43.0, abind 1.4-5, bit 4.0.5, bit64 4.0.5, bitops 1.0-7, blob 1.2.4, caTools 1.18.2, cachem 1.0.8, cli 3.6.1, colorspace 2.1-0, compiler 4.4.0, crayon 1.5.2, digest 0.6.33, evaluate 0.22, fastmap 1.1.1, fftwtools 0.9-11, gtools 3.9.4, htmltools 0.5.6.1, htmlwidgets 1.6.2, httr 1.4.7, jpeg 0.1-10, knitr 1.44, lmtest 0.9-40, locfit 1.5-9.8, memoise 2.0.1, png 0.1-8, rlang 1.1.1, rmarkdown 2.25, statmod 1.5.0, tiff 0.1-11, tools 4.4.0, vctrs 0.6.4, xfun 0.40, xtable 1.8-4, yaml 2.3.7, zlibbioc 1.49.0, zoo 1.8-12

References

- [1] A.E. Carpenter, T.R. Jones, M.R. Lamprecht, C. Clarke, I.H. Kang, O. Friman, D.A. Guertin, J.H. Chang, R.A. Lindquist, J. Moffat, et al. CellProfiler: image analysis software for identifying and quantifying cell phenotypes. *Genome Biology*, 7(10):R100, 2006.
- [2] F. Fuchs, G. Pau, D. Kranz, O. Sklyar, C. Budjan, S. Steinbrink, T. Horn, A. Pedal, W. Huber, and M. Boutros. Clustering phenotype populations by genome-wide RNAi and multiparametric imaging. *Molecular Systems Biology*, 6(1), 2010.
- [3] M. Held, M.H.A. Schmitz, B. Fischer, T. Walter, B. Neumann, M.H. Olma, M. Peter, J. Ellenberg, and D.W. Gerlich. CellCognition: time-resolved phenotype annotation in high-throughput live cell imaging. *Nature Methods*, 7(9):747–754, 2010.
- [4] G. Pau, F. Fuchs, O. Sklyar, M. Boutros, and W. Huber. EBIImage - an R package for image processing with applications to cellular phenotypes. *Bioinformatics*, 26(7):979–981, 2010.
- [5] T. Jones, A. Carpenter, and P. Golland. Voronoi-based segmentation of cells on image manifolds. *Computer Vision for Biomedical Image Applications*, pages 535–543, 2005.
- [6] R. Mani, R.P. St Onge, J.L. Hartman, G. Giaever, and F.P. Roth. Defining genetic interaction. *Proceedings of the National Academy of Sciences*, 105(9):3461, 2008.
- [7] M. Schuldiner, S.R. Collins, N.J. Thompson, V. Denic, A. Bhamidipati, T. Punna, J. Ihmels, B. Andrews, C. Boone, J.F. Greenblatt, et al. Exploration of the function and organization of the yeast early secretory pathway through an epistatic miniarray profile. *Cell*, 123(3):507–519, 2005.
- [8] M. Costanzo, A. Baryshnikova, J. Bellay, Y. Kim, E.D. Spear, C.S. Sevier, H. Ding, J.L.Y. Koh, K. Toufighi, S. Mostafavi, et al. The genetic landscape of a cell. *Science*, 327(5964):425, 2010.
- [9] A. Baryshnikova, M. Costanzo, Y. Kim, H. Ding, J. Koh, K. Toufighi, J.Y. Youn, J. Ou, B.J. San Luis, S. Bandyopadhyay, et al. Quantitative analysis of fitness and genetic interactions in yeast on a genome scale. *Nature Methods*, 7(12):1017–1024, 2010.
- [10] S. Bandyopadhyay, M. Mehta, D. Kuo, M.K. Sung, R. Chuang, E.J. Jaehnig, B. Bodenmiller, K. Licon, W. Copeland, M. Shales, et al. Rewiring of genetic networks in response to DNA damage. *Science*, 330(6009):1385, 2010.

Mapping genetic interactions in human cancer cells, Laufer, Fischer et al., 2013

- [11] T. Horn, T. Sandmann, B. Fischer, E. Axelsson, W. Huber, and M. Boutros. Mapping of signaling networks through synthetic genetic interaction analysis by RNAi. *Nature Methods*, 8(4):341–346, 2011.
- [12] E. Axelsson, T. Sandmann, T. Horn, M. Boutros, W. Huber, and B. Fischer. Extracting quantitative genetic interaction phenotypes from matrix combinatorial RNAi. *BMC Bioinformatics*, 12(1):342, 2011.
- [13] W. Huber, A. Von Heydebreck, H. Sültmann, A. Poustka, and M. Vingron. Variance stabilization applied to microarray data calibration and to the quantification of differential expression. *Bioinformatics*, 18(suppl 1):S96–S104, 2002.