

# *genefu*: a package for breast cancer gene expression analysis

Deena M.A. Gendoo<sup>1,2</sup>, Natchar Ratanasirigulchai<sup>1</sup>, Markus Schröder<sup>3</sup>, Laia Pare<sup>4</sup>, Joel S. Parker<sup>5</sup>, Aleix Prat<sup>4,6,7</sup>, and Benjamin Haibe-Kains<sup>\*1,2</sup>

<sup>1</sup>Bioinformatics and Computational Genomics Laboratory, Princess Margaret Cancer Center, University Health Network, Toronto, Ontario, Canada

<sup>2</sup>Department of Medical Biophysics, University of Toronto, Toronto, Canada

<sup>3</sup>UCD School of Biomolecular and Biomedical Science, Conway Institute, University College Dublin, Belfield, Dublin, Ireland

<sup>4</sup>Translational Genomics and Targeted Therapeutics in Solid Tumors, August Pi i Sunyer Biomedical Research Institute (IDIBAPS), 08036, Barcelona, Spain

<sup>5</sup>Lineberger Comprehensive Cancer Center, University of North Carolina, Chapel Hill, NC 27599, USA

<sup>6</sup>Translational Genomics Group, Vall d'Àl·Hebron Institute of Oncology (VHIO), 08035, Barcelona, Spain

<sup>7</sup>Department of Medical Oncology, Hospital ClÀnic of Barcelona, 08036, Barcelona, Spain

April 30, 2018

## Contents

<b>1</b>	<b>Introduction</b>	<b>1</b>
<b>2</b>	<b>Loading package for case studies</b>	<b>2</b>
<b>3</b>	<b>Load Datasets and Packages for Case Studies</b>	<b>2</b>
<b>4</b>	<b>Case Study : Compare Molecular Subtype Classifications</b>	<b>4</b>
<b>5</b>	<b>Case Study : Comparing risk prediction models</b>	<b>12</b>
<b>6</b>	<b>References</b>	<b>24</b>
<b>7</b>	<b>Session Info</b>	<b>25</b>

## 1 Introduction

The *genefu* package is providing relevant functions for gene expression analysis, especially in breast cancer. This package includes a number of algorithms for molecular subtype classification. The package also includes implementations of prognostic prediction algorithms, along with lists of prognostic gene signatures on which these algorithms were based.

Please refer to the manuscript URL and Lab website: <http://www.pmgenomics.ca/bhklab/software/genefu>

Please also refer to the References section below, for additional information on publications that have cited Version 1 of *genefu*.

---

\*benjamin.haibe.kains@utoronto.ca

## 2 Loading package for case studies

First we load the `genefu` into the workspace. The package is publicly available and can be installed from Bioconductor version 2.8 or higher in R version 2.13.0 or higher.

To install the `genefu` package:

```
knitr::opts_chunk$set(eval=TRUE,cache=TRUE)
source("http://bioconductor.org/biocLite.R")
biocLite("genefu")
```

For computing the risk scores, estimates of the performance of the risk scores, combining the estimates and comparing the estimates we have to load the `genefu` and `survcomp` packages into the workspace. We also load all the packages we need to conduct the case studies.

```
library(genefu)
library(xtable)
library(rmeta)
library(Biobase)
library(caret)
```

## 3 Load Datasets and Packages for Case Studies

The following case study compares risk prediction models. This includes computing risk scores, computing estimates of the performance of the risk scores, as well as combining the estimates and comparing them.

The five data sets that we use in the case study are publicly available as experimental data packages on Bioconductor.org. In particular we used:

breastCancerMAINZ: [bioconductor.org/packages/release/data/experiment/html/breastCancerMAINZ.html](http://bioconductor.org/packages/release/data/experiment/html/breastCancerMAINZ.html)

breastCancerUPP: [bioconductor.org/packages/release/data/experiment/html/breastCancerUPP.html](http://bioconductor.org/packages/release/data/experiment/html/breastCancerUPP.html)

breastCancerUNT: [bioconductor.org/packages/release/data/experiment/html/breastCancerUNT.html](http://bioconductor.org/packages/release/data/experiment/html/breastCancerUNT.html)

breastCancerNKI: [bioconductor.org/packages/release/data/experiment/html/breastCancerNKI.html](http://bioconductor.org/packages/release/data/experiment/html/breastCancerNKI.html)

breastCancerTRANSBIG: [bioconductor.org/packages/release/data/experiment/html/breastCancerTRANSBIG.html](http://bioconductor.org/packages/release/data/experiment/html/breastCancerTRANSBIG.html)

Please Note: We don't use the `breastCancerVDX` experimental package in this case study since it has been used as training data set for GENIUS. Please refer to Haibe-Kains et al, 2010. The `breastCancerVDX` is found at the following link:

breastCancerVDX: <http://www.bioconductor.org/packages/release/data/experiment/html/breastCancerVDX.html>

These experimental data packages can be installed from Bioconductor version 2.8 or higher in R version 2.13.0 or higher. For the experimental data packages the commands for installing the data sets are:

```
source("http://www.bioconductor.org/biocLite.R")
biocLite("breastCancerMAINZ")
biocLite("breastCancerTRANSBIG")
biocLite("breastCancerUPP")
biocLite("breastCancerUNT")
biocLite("breastCancerNKI")
```

And to load the packages into R, please use the following commands:

Table 1: Detailed overview for the data sets used in the case study

Dataset	Patients [#]	ER+ [#]	HER2+ [#]	Age [years]	Grade [1/2/3]	Platform
MAINZ	200	155	23	25-90	29/136/35	HGU133A
TRANSBIG	198	123	35	24-60	30/83/83	HGU133A
UPP	251	175	46	28-93	67/128/54	HGU133AB
UNT	137	94	21	24-73	32/51/29	HGU133AB
NKI	337	212	53	26-62	79/109/149	Agilent
Overall	1123	759	178	25-73	237/507/350	Affy/Agilent

```
library(breastCancerMAINZ)
library(breastCancerTRANSBIG)
library(breastCancerUPP)
library(breastCancerUNT)
library(breastCancerNKI)
```

Table1 shows an overview of the data sets and the patients (n=1123). Information on ER and HER2 status, as well as patient ages (range of patient ages per dataset) has been extracted from the phenotype (pData) of the corresponding dataset under the Gene Expression Omnibus (GEO). The corresponding GEO accession numbers of the Mainz, Transbig, UPP, and UNT datasets are GSE11121, GSE7390, GSE3494, and GSE2990 respectively. Data was also obtained from the publication supplementary information for the NKI dataset.

For analysis involving molecular subtyping classifications [Section 4], we perform molecular subtyping on each of the datasets separately, after the removal of duplicate patients in the datasets.

For analysis comparing risk prediction models and determining prognosis [Section 5], we selected from those 1123 breast cancer patients only the patients that are node negative and didn't receive any treatment (except local radiotherapy), which results in 713 patients [please consult Section 5 for more details] .

Since there are duplicated patients in the five data sets, we first have to identify the duplicated patients and we subsequently store them in a vector.

```
data(breastCancerData)
cinfo <- colnames(pData(mainz7g))
data.all <- c("transbig7g"=transbig7g, "unt7g"=unt7g, "upp7g"=upp7g,
             "mainz7g"=mainz7g, "nki7g"=nki7g)

idtoremove.all <- NULL
duplres <- NULL

## No overlaps in the MainZ and NKI datasets.

## Focus on UNT vs UPP vs TRANSBIG
demo.all <- rbind(pData(transbig7g), pData(unt7g), pData(upp7g))
dn2 <- c("TRANSBIG", "UNT", "UPP")

## Karolinska
## Search for the VDXKIU, KIU, UPPU series
ds2 <- c("VDXKIU", "KIU", "UPPU")
demot <- demo.all[complete.cases(demo.all[, c("series")]) & is.element(demo.all[, "series"], ds2), ]

# Find the duplicated patients in that series
duplid <- sort(unique(demot[duplicated(demot[, "id"]), "id"]))
duplrest <- NULL
for(i in 1:length(duplid)) {
```

```

tt <- NULL
for(k in 1:length(dn2)) {
  myx <- sort(row.names(demot)[complete.cases(demot[, c("id", "dataset")]) &
              demot[, "id"] == duplid[i] & demot[, "dataset"] == dn2[k]])
  if(length(myx) > 0) { tt <- c(tt, myx) }
}
duplrest <- c(duplrest, list(tt))
}
names(duplrest) <- duplid
duplres <- c(duplres, duplrest)

## Oxford
## Search for the VVDXOXFU, OXFU series
ds2 <- c("VVDXOXFU", "OXFU")
demot <- demo.all[complete.cases(demo.all[, c("series")]) & is.element(demo.all[, "series"], ds2), ]

# Find the duplicated patients in that series
duplid <- sort(unique(demot[duplicated(demot[, "id"]), "id"]))
duplrest <- NULL
for(i in 1:length(duplid)) {
  tt <- NULL
  for(k in 1:length(dn2)) {
    myx <- sort(row.names(demot)[complete.cases(demot[, c("id", "dataset")]) &
                demot[, "id"] == duplid[i] & demot[, "dataset"] == dn2[k]])
    if(length(myx) > 0) { tt <- c(tt, myx) }
  }
  duplrest <- c(duplrest, list(tt))
}
names(duplrest) <- duplid
duplres <- c(duplres, duplrest)

## Full set duplicated patients
duPL <- sort(unlist(lapply(duplres, function(x) { return(x[-1]) } )))

```

## 4 Case Study : Compare Molecular Subtype Classifications

We now perform molecular subtyping on each of the datasets. Here, we perform subtyping using the PAM50 as well as the SCMOD2 subtyping algorithms.

```

dn <- c("transbig", "unt", "upp", "mainz", "nki")
dn.platform <- c("affy", "affy", "affy", "affy", "agilent")
res <- ddemo.all <- ddemo.coln <- NULL

for(i in 1:length(dn)) {

  ## load dataset
  dd <- get(data(list=dn[i]))
  #Remove duplicates identified first
  message("obtained dataset!")

  #Extract expression set, pData, fData for each dataset
  ddata <- t(exprs(dd))

```

```

ddemo <- phenoData(dd)@data

if(length(intersect(rownames(ddata), duPL))>0)
{
  ddata<-ddata[-which(rownames(ddata) %in% duPL),]
  ddemo<-ddemo[-which(rownames(ddemo) %in% duPL),]
}

dannot <- featureData(dd)@data

# MOLECULAR SUBTYPING
# Perform subtyping using scmod2.robust
# scmod2.robust: List of parameters defining the subtype clustering model
# (as defined by Wirapati et al)

# OBSOLETE FUNCTION CALL - OLDER VERSIONS OF GENEFU
# SubtypePredictions<-subtype.cluster.predict(sbt.model=scmod2.robust,data=ddata,
#                                              annot=dannot,do.mapping=TRUE,verbose=TRUE)

# CURRENT FUNCTION CALL - NEWEST VERSION OF GENEFU
SubtypePredictions<-molecular.subtyping(sbt.model = "scmod2",data = ddata,
                                       annot = dannot,do.mapping = TRUE)

#Get sample counts pertaining to each subtype
table(SubtypePredictions$subtype)
#Select samples pertaining to Basal Subtype
Basals<-names(which(SubtypePredictions$subtype == "ER-/HER2-"))
#Select samples pertaining to HER2 Subtype
HER2s<-names(which(SubtypePredictions$subtype == "HER2+"))
#Select samples pertaining to Luminal Subtypes
LuminalB<-names(which(SubtypePredictions$subtype == "ER+/HER2- High Prolif"))
LuminalA<-names(which(SubtypePredictions$subtype == "ER+/HER2- Low Prolif"))

#ASSIGN SUBTYPES TO EVERY SAMPLE, ADD TO THE EXISTING PHENODATA
ddemo$SCMOD2<-SubtypePredictions$subtype
ddemo[LuminalB,]$SCMOD2<-"LumB"
ddemo[LuminalA,]$SCMOD2<-"LumA"
ddemo[Basals,]$SCMOD2<-"Basal"
ddemo[HER2s,]$SCMOD2<-"Her2"

# Perform subtyping using PAM50
# Matrix should have samples as ROWS, genes as COLUMNS
# rownames(dannot)<-dannot$probe<-dannot$EntrezGene.ID

# OLDER FUNCTION CALL
# PAM50Preds<-intrinsic.cluster.predict(sbt.model=pam50,data=ddata,
#                                       annot=dannot,do.mapping=TRUE,verbose=TRUE)

# NEWER FUNCTION CALL BASED ON MOST RECENT VERSION
PAM50Preds<-molecular.subtyping(sbt.model = "pam50",data=ddata,
                               annot=dannot,do.mapping=TRUE)

```

```

table(PAM50Preds$subtype)
ddemo$PAM50<-PAM50Preds$subtype
LumA<-names(PAM50Preds$subtype)[which(PAM50Preds$subtype == "LumA")]
LumB<-names(PAM50Preds$subtype)[which(PAM50Preds$subtype == "LumB")]
ddemo[LumA,]$PAM50<-"LumA"
ddemo[LumB,]$PAM50<-"LumB"

ddemo.all <- rbind(ddemo, ddemo.all)
}

## obtained dataset!
## obtained dataset!
## obtained dataset!
## obtained dataset!
## obtained dataset!

```

We can compare the performance of both molecular subtyping methods and determine how concordant subtype predictions are across the global population. We first generate a confusion matrix of the subtype predictions.

```

# Obtain the subtype prediction counts for PAM50
table(ddemo.all$PAM50)

##
## Basal Her2 LumB LumA Normal
## 161 116 306 398 38

Normals<-rownames(ddemo.all[which(ddemo.all$PAM50 == "Normal"),])

# Obtain the subtype prediction counts for SCMOD2
table(ddemo.all$SCMOD2)

##
## Basal Her2 LumA LumB
## 184 118 434 283

ddemo.all$PAM50<-as.character(ddemo.all$PAM50)
# We compare the samples that are predicted as pertaining to a molecular subtyp
# We ignore for now the samples that predict as 'Normal' by PAM50
confusionMatrix(factor(ddemo.all[-which(rownames(ddemo.all) %in% Normals),]$SCMOD2),
                 factor(ddemo.all[-which(rownames(ddemo.all) %in% Normals),]$PAM50))

## Confusion Matrix and Statistics
##
##          Reference
## Prediction Basal Her2 LumA LumB
## Basal      151  16   2   4
## Her2        6  84   4  22
## LumA        1   4 361  43
## LumB        3  12  31 237
##
## Overall Statistics
##
##          Accuracy : 0.8491
##          95% CI : (0.8252, 0.871)

```

```
##      No Information Rate : 0.4057
##      P-Value [Acc > NIR] : <2e-16
##
##              Kappa : 0.7838
##      McNemar's Test P-Value : 0.1285
##
## Statistics by Class:
##
##              Class: Basal Class: Her2 Class: LumA Class: LumB
## Sensitivity          0.9379      0.72414      0.9070      0.7745
## Specificity          0.9732      0.96301      0.9177      0.9319
## Pos Pred Value       0.8728      0.72414      0.8826      0.8375
## Neg Pred Value       0.9876      0.96301      0.9353      0.9011
## Prevalence           0.1641      0.11825      0.4057      0.3119
## Detection Rate       0.1539      0.08563      0.3680      0.2416
## Detection Prevalence 0.1764      0.11825      0.4169      0.2885
## Balanced Accuracy     0.9555      0.84357      0.9124      0.8532
```

From these results, the concordance of the predictions between these models is around 85 percent.

We can also compare the survival of patients for each subtype. We plot the survival curves of patients by subtype, based on each molecular classification algorithm

```
# http://www.inside-r.org/r-doc/survival/survfit.coxph
library(survival)
ddemo<-ddemo.all
data.for.survival.SCMOD2 <- ddemo[,c("e.os", "t.os", "SCMOD2","age")]
data.for.survival.PAM50 <- ddemo[,c("e.os", "t.os", "PAM50","age")]
# Remove patients with missing survival information
data.for.survival.SCMOD2 <- data.for.survival.SCMOD2[complete.cases(data.for.survival.SCMOD2),]
data.for.survival.PAM50 <- data.for.survival.PAM50[complete.cases(data.for.survival.PAM50),]

days.per.month <- 30.4368
days.per.year <- 365.242

data.for.survival.PAM50$months_to_death <- data.for.survival.PAM50$t.os / days.per.month
data.for.survival.PAM50$vital_status <- data.for.survival.PAM50$e.os == "1"
surv.obj.PAM50 <- survfit(Surv(data.for.survival.PAM50$months_to_death,
                             data.for.survival.PAM50$vital_status) ~ data.for.survival.PAM50$PAM50)

data.for.survival.SCMOD2$months_to_death <- data.for.survival.SCMOD2$t.os / days.per.month
data.for.survival.SCMOD2$vital_status <- data.for.survival.SCMOD2$e.os == "1"
surv.obj.SCMOD2 <- survfit(Surv(
  data.for.survival.SCMOD2$months_to_death,
  data.for.survival.SCMOD2$vital_status) ~ data.for.survival.SCMOD2$SCMOD2)

message("KAPLAN-MEIR CURVE - USING PAM50")

## KAPLAN-MEIR CURVE - USING PAM50

# survMisc::autoplot(surv.obj.PAM50, title="Survival curves PAM50", censSize=0)$plot +
#   scale_colour_manual(name="Strata", values=c("black", "green", "blue", "red"))

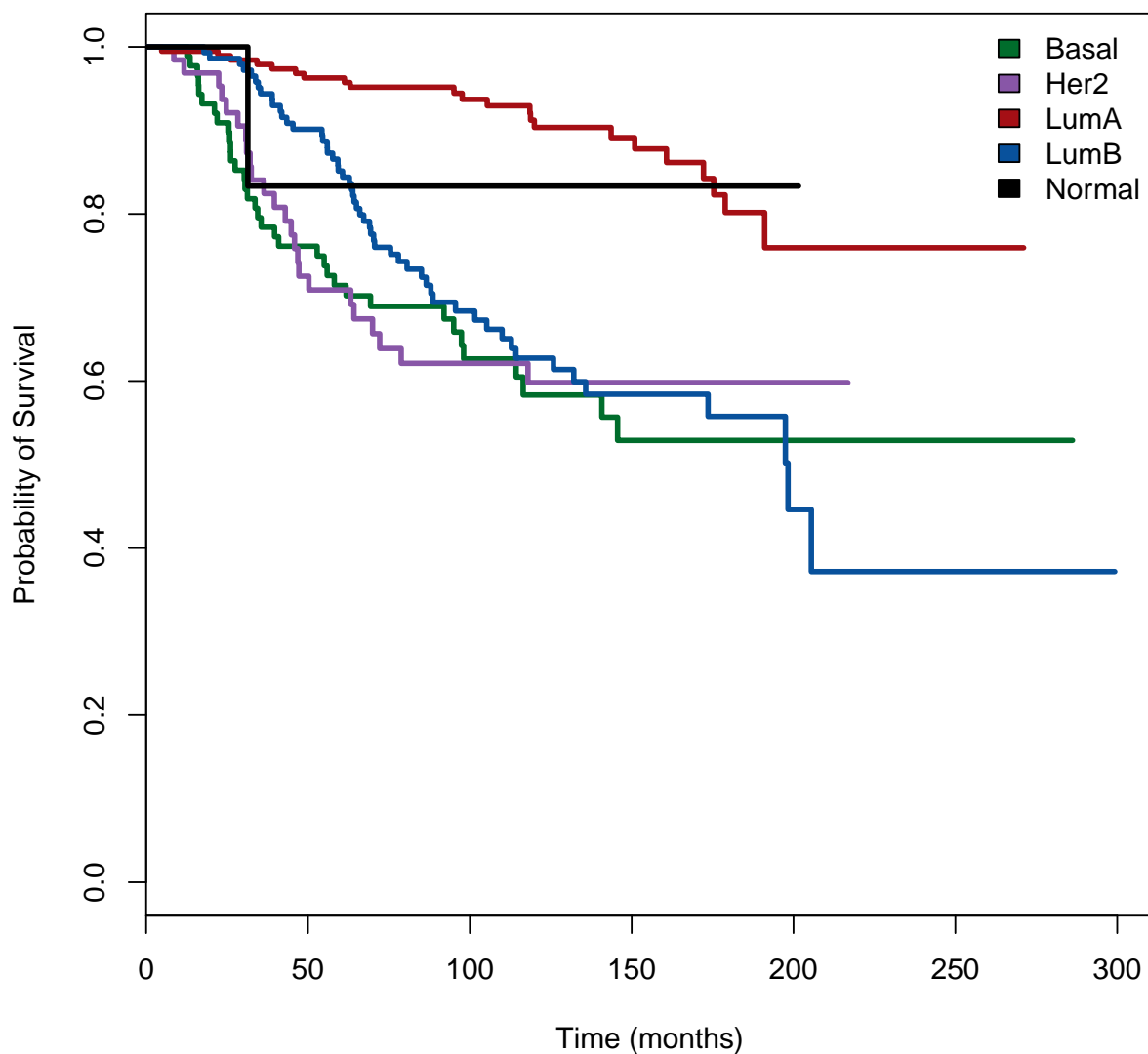
plot(main = "Survival Curves PAM50", surv.obj.PAM50,
     col =c("#006d2c", "#8856a7", "#a50f15", "#08519c", "#000000"),lty = 1,lwd = 3,
```

```

xlab = "Time (months)",ylab = "Probability of Survival")
legend("topright",
      fill = c("#006d2c", "#8856a7", "#a50f15", "#08519c", "#000000"),
      legend = c("Basal", "Her2", "LumA", "LumB", "Normal"),bty = "n")

```

## Survival Curves PAM50



```

message("KAPLAN-MEIR CURVE - USING SCMOD2")

## KAPLAN-MEIR CURVE - USING SCMOD2

# survMisc::autoplot(surv.obj.SCMOD2, title="Survival curves SCMOD2", censSize=0)$plot +
#   scale_colour_manual(name="Strata", values=c("black", "green", "blue"))

plot(main = "Survival Curves SCMOD2", surv.obj.SCMOD2,
      col = c("#006d2c", "#8856a7", "#a50f15", "#08519c"),lty = 1,lwd = 3,

```

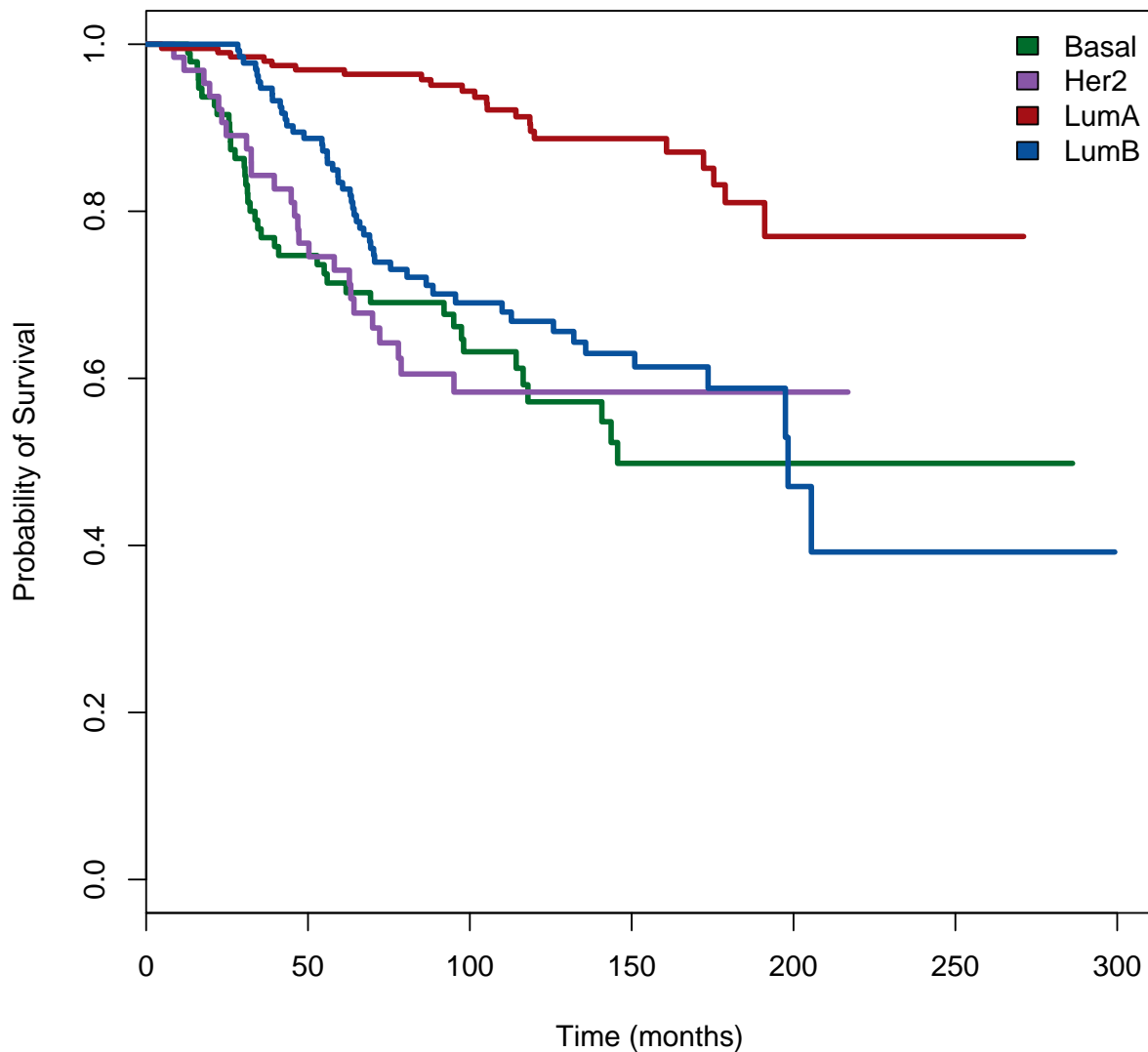


```

xlab = "Time (months)",ylab = "Probability of Survival")
legend("topright",
      fill = c("#006d2c", "#8856a7", "#a50f15", "#08519c"),
      legend = c("Basal", "Her2", "LumA", "LumB"),bty = "n")

```

## Survival Curves SCMOD2



```

## GENERATE A OVERLAYED PLOT OF SURVIVAL CURVES
message("Overlayed Survival Plots based on PAM50 and SCMOD2")

## Overlayed Survival Plots based on PAM50 and SCMOD2

## Basal Her2 LuminalA LuminalB Normal
plot(surv.obj.PAM50,col =c("#006d2c", "#8856a7", "#a50f15", "#08519c", "#000000"),lty = 1,lwd = 3,
     xlab = "Time (months)",ylab = "Probability of Survival",ymin = 0.2)
legend("topright",

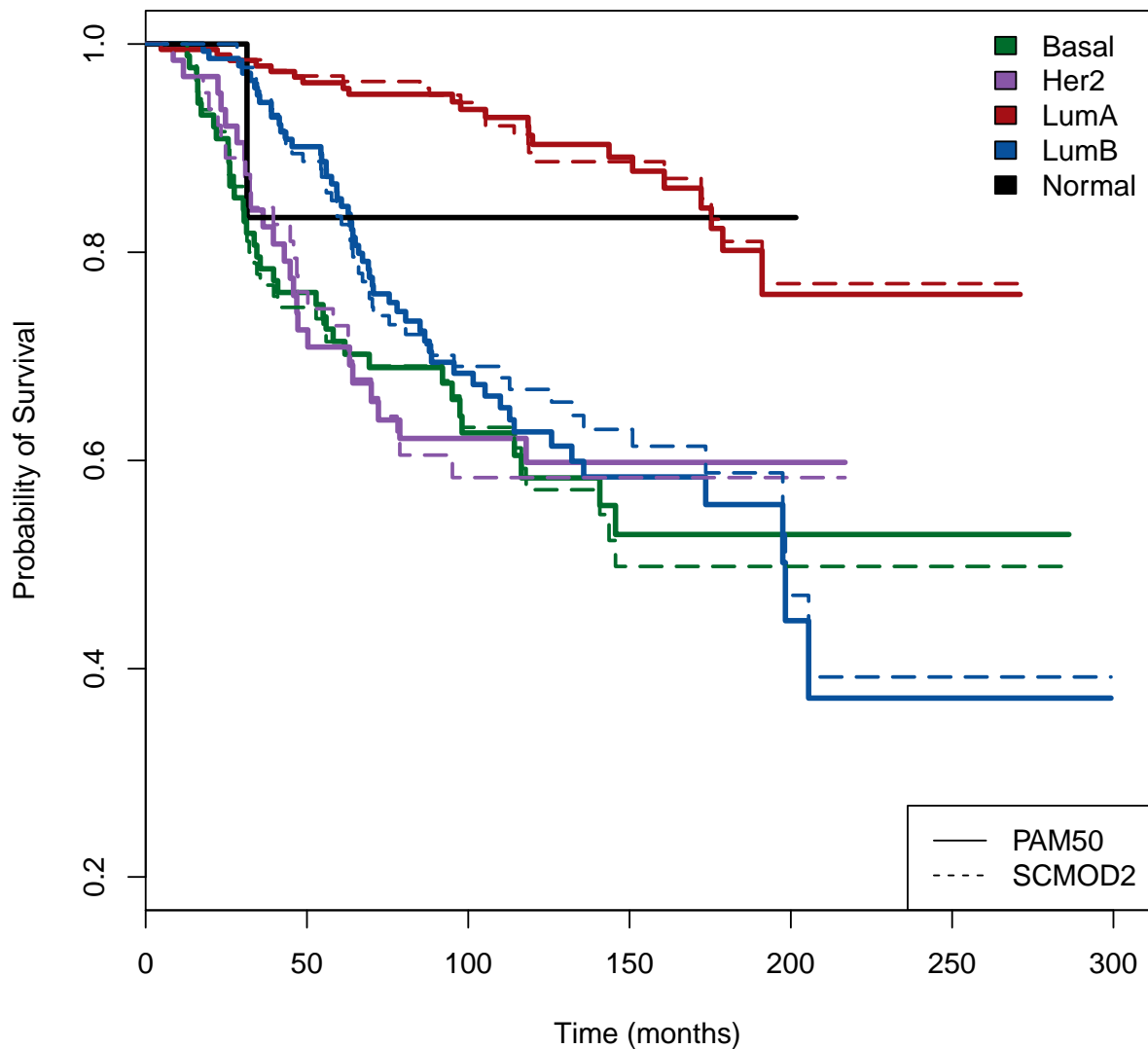
```

```

fill = c("#006d2c", "#8856a7", "#a50f15", "#08519c", "#000000"),
legend = c("Basal", "Her2", "LumA", "LumB", "Normal"), bty = "n")

par(new=TRUE)
## Basal Her2 LuminalA LuminalB
lines(surv.obj.SCMOD2, col = c("#006d2c", "#8856a7", "#a50f15", "#08519c"), lwd=2, lty=5)
legend("bottomright", c("PAM50", "SCMOD2"), lty=c("solid", "dashed"))

```



We can now compare which of the molecular subtyping algorithms is more prognostic. To do this we use a Cross-validated Partial Likelihood (cvpl) calculation from `survcomp`. This returns the mean cross-validated partial likelihood, for each algorithm, using molecular subtypes for stratification

```
set.seed(12345)
```

```

PAM5_CVPL<-cvpl(x=data.for.survival.PAM50$age,
               surv.time=data.for.survival.PAM50$months_to_death,
               surv.event=data.for.survival.PAM50$vital_status,
               strata=as.integer(factor(data.for.survival.PAM50$PAM50)),
               nfold=10, setseed=54321)$cvpl

SCMOD2_CVPL<-cvpl(x=data.for.survival.SCMOD2$age,
                  surv.time=data.for.survival.SCMOD2$months_to_death,
                  surv.event=data.for.survival.SCMOD2$vital_status,
                  strata=as.integer(factor(data.for.survival.SCMOD2$SCMOD2)),
                  nfold=10, setseed=54321)$cvpl

print.data.frame(data.frame(cbind(PAM5_CVPL,SCMOD2_CVPL)))

##          PAM5_CVPL  SCMOD2_CVPL
## logpl  1.424772    1.430269

```

## 5 Case Study : Comparing risk prediction models

We compute the risk scores using the following list of algorithms (and corresponding gene functions):

Subtype Clustering Model using just the AURKA gene: `scmgene.robust()`

Subtype Clustering Model using just the ESR1 gene: `scmgene.robust()`

Subtype Clustering Model using just the ERBB2 gene: `scmgene.robust()`

NPI: `npi()`

GGI: `ggi()`

GENIUS: `genius()`

EndoPredict: `endoPredict()`

OncotypeDx: `oncotypedx()`

TamR: `tamr()`

GENE70: `gene70()`

PIK3CA: `pik3cags()`

rorS: `rorS()`

```
dn <- c("transbig", "unt", "upp", "mainz", "nki")
dn.platform <- c("affy", "affy", "affy", "affy", "agilent")

res <- ddemo.all <- ddemo.coln <- NULL
for(i in 1:length(dn)) {

  ## load dataset
  dd <- get(data(list=dn[i]))

  #Extract expression set, pData, fData for each dataset
  ddata <- t(exprs(dd))
  ddemo <- phenoData(dd)@data
  dannot <- featureData(dd)@data
  ddemo.all <- c(ddemo.all, list(ddemo))
  if(is.null(ddemo.coln))
  { ddemo.coln <- colnames(ddemo) } else
  { ddemo.coln <- intersect(ddemo.coln, colnames(ddemo)) }
  rest <- NULL

  ## AURKA
  ## if affy platform consider the probe published in Desmedt et al., CCR, 2008
  if(dn.platform[i] == "affy") { domap <- FALSE } else { domap <- TRUE }
  modt <- scmgene.robust$mod$AURKA
  ## if agilent platform consider the probe published in Desmedt et al., CCR, 2008
  if(dn.platform[i] == "agilent") {
    domap <- FALSE
    modt[ , "probe"] <- "NM_003600"
  }
  rest <- cbind(rest, "AURKA"=sig.score(x=modt, data=ddata, annot=dannot, do.mapping=domap)$score)
```

```

## ESR1
## if affy platform consider the probe published in Desmedt et al., CCR, 2008
if(dn.platform[i] == "affy") { domap <- FALSE } else { domap <- TRUE }
modt <- scmgene.robust$mod$ESR1
## if agilent platform consider the probe published in Desmedt et al., CCR, 2008
if(dn.platform[i] == "agilent") {
  domap <- FALSE
  modt[ , "probe"] <- "NM_000125"
}
rest <- cbind(rest, "ESR1"=sig.score(x=modt, data=ddata, annot=dannot, do.mapping=domap)$score)

## ERBB2
## if affy platform consider the probe published in Desmedt et al., CCR, 2008
if(dn.platform[i] == "affy") { domap <- FALSE } else { domap <- TRUE }
modt <- scmgene.robust$mod$ERBB2
## if agilent platform consider the probe published in Desmedt et al., CCR, 2008
if(dn.platform[i] == "agilent") {
  domap <- FALSE
  modt[ , "probe"] <- "NM_004448"
}
rest <- cbind(rest, "ERBB2"=sig.score(x=modt, data=ddata, annot=dannot, do.mapping=domap)$score)

## NPI
ss <- ddemo[ , "size"]
gg <- ddemo[ , "grade"]
nn <- rep(NA, nrow(ddemo))
nn[complete.cases(ddemo[ , "node"]) & ddemo[ , "node"] == 0] <- 1
nn[complete.cases(ddemo[ , "node"]) & ddemo[ , "node"] == 1] <- 3
names(ss) <- names(gg) <- names(nn) <- rownames(ddemo)
rest <- cbind(rest, "NPI"=npi(size=ss, grade=gg, node=nn, na.rm=TRUE)$score)

## GGI
if(dn.platform[i] == "affy") { domap <- FALSE } else { domap <- TRUE }
rest <- cbind(rest, "GGI"=ggi(data=ddata, annot=dannot, do.mapping=domap)$score)

## GENIUS
if(dn.platform[i] == "affy") { domap <- FALSE } else { domap <- TRUE }
rest <- cbind(rest, "GENIUS"=genius(data=ddata, annot=dannot, do.mapping=domap)$score)

## ENDOPREDICT
if(dn.platform[i] == "affy") { domap <- FALSE } else { domap <- TRUE }
rest <- cbind(rest, "EndoPredict"=endoPredict(data=ddata, annot=dannot, do.mapping=domap)$score)

# OncotypeDx
if(dn.platform[i] == "affy") { domap <- FALSE } else { domap <- TRUE }
rest <- cbind(rest, "OncotypeDx"=oncotypedx(data=ddata, annot=dannot, do.mapping=domap)$score)

## TamR
# Note: risk is not implemented, the function will return NA values
if(dn.platform[i] == "affy") { domap <- FALSE } else { domap <- TRUE }
rest <- cbind(rest, "TAMR13"=tamr13(data=ddata, annot=dannot, do.mapping=domap)$score)

## GENE70

```

```

# Need to do mapping for Affy platforms because this is based on Agilent.
# Hence the mapping rule is reversed here!
if(dn.platform[i] == "affy") { domap <- TRUE } else { domap <- FALSE }
rest <- cbind(rest, "GENE70"=gene70(data=ddata, annot=dannot, std="none",do.mapping=domap)$score)

## Pik3cags
if(dn.platform[i] == "affy") { domap <- FALSE } else { domap <- TRUE }
rest <- cbind(rest, "PIK3CA"=pik3cags(data=ddata, annot=dannot, do.mapping=domap))

## rorS
# Uses the pam50 algorithm. Need to do mapping for both Affy and Agilent
rest <- cbind(rest, "rorS"=rorS(data=ddata, annot=dannot, do.mapping=TRUE)$score)

## GENE76
# Mainly designed for Affy platforms. Has been excluded here

# BIND ALL TOGETHER
res <- rbind(res, rest)
}
names(ddemo.all) <- dn

```

For further analysis and handling of the data we store all information in one object. We also remove the duplicated patients from the analysis and take only those patients into account, that have complete information for nodal, survival and treatment status.

```

ddemot <- NULL
for(i in 1:length(ddemo.all)) {
  ddemot <- rbind(ddemot, ddemo.all[[i]][ , ddemo.coln, drop=FALSE])
}
res[complete.cases(ddemot[ , "dataset"]) & ddemot[ , "dataset"] == "VDX", "GENIUS"] <- NA

## select only untreated node-negative patients with all risk predictions
## ie(incomplete cases (where risk prediction may be missing for a sample) are subsequently removed)
# Note that increasing the number of risk prediction analyses
# may increase the number of incomplete cases
# In the previous vignette for genefu version1, we were only testing 4 risk predictors,
# so we had a total of 722 complete cases remaining
# Here, we are now testing 12 risk predictors, so we only have 713 complete cases remaining.
# The difference of 9 cases between the two versions are all from the NKI dataset.
myx <- complete.cases(res, ddemot[ , c("node", "treatment")]) &
  ddemot[ , "treatment"] == 0 & ddemot[ , "node"] == 0 & !is.element(rownames(ddemot), duPL)

res <- res[myx, , drop=FALSE]
ddemot <- ddemot[myx, , drop=FALSE]

```

To compare the risk score performances, we compute the concordance index<sup>1</sup>, which is the probability that, for a pair of randomly chosen comparable samples, the sample with the higher risk prediction will experience an event before the other sample or belongs to a higher binary class.

```

cc.res <- complete.cases(res)
datasetList <- c("MAINZ", "TRANSBIG", "UPP", "UNT", "NKI")
riskPList <- c("AURKA", "ESR1", "ERBB2", "NPI", "GGI", "GENIUS",

```

<sup>1</sup>The same analysis could be performed with D index and hazard ratio by using the functions `D.index` and `hazard.ratio` from the *survcomp* package respectively

```

        "EndoPredict", "OncotypeDx", "TAMR13", "GENE70", "PIK3CA", "rorS")
setT <- setE <- NULL
resMatrix <- as.list(NULL)

for(i in datasetList)
{
  dataset.only <- ddemot[, "dataset"] == i
  patientsAll <- cc.res & dataset.only

  ## set type of available survival data
  if(i == "UPP") {
    setT <- "t.rfs"
    setE <- "e.rfs"
  } else {
    setT <- "t.dmfs"
    setE <- "e.dmfs"
  }

  # Calculate cindex computation for each predictor
  for (Dat in riskPList)
  {
    cindex <- t(apply(X=t(res[patientsAll,Dat]), MARGIN=1, function(x, y, z) {
      tt <- concordance.index(x=x, surv.time=y, surv.event=z, method="noether", na.rm=TRUE);
      return(c("cindex"=tt$c.index, "cindex.se"=tt$se, "lower"=tt$lower, "upper"=tt$upper)); },
      y=ddemot[patientsAll,setT], z=ddemot[patientsAll, setE]))

    resMatrix[[Dat]] <- rbind(resMatrix[[Dat]], cindex)
  }
}

```

Using a random-effects model we combine the dataset-specific performance estimated into overall estimates for each risk prediction model:

```

for(i in names(resMatrix)){
  #Get a meta-estimate
  ceData <- combine.est(x=resMatrix[[i]][, "cindex"], x.se=resMatrix[[i]][, "cindex.se"], hetero=TRUE)
  cLower <- ceData$estimate + qnorm(0.025, lower.tail=TRUE) * ceData$se
  cUpper <- ceData$estimate + qnorm(0.025, lower.tail=FALSE) * ceData$se

  cindex0 <- cbind("cindex"=ceData$estimate, "cindex.se"=ceData$se, "lower"=cLower, "upper"=cUpper)
  resMatrix[[i]] <- rbind(resMatrix[[i]], cindex0)
  rownames(resMatrix[[i]]) <- c(datasetList, "Overall")
}

```

In order to compare the different risk prediction models we compute one-sided p-values of the meta-estimates:

```

pv <- sapply(resMatrix, function(x) { return(x["Overall", c("cindex", "cindex.se")]) })
pv <- apply(pv, 2, function(x) { return(pnorm((x[1] - 0.5) / x[2], lower.tail=x[1] < 0.5)) })
printPV <- matrix(pv, ncol=length(names(resMatrix)))
rownames(printPV) <- "P-value"
colnames(printPV) <- names(pv)
printPV<-t(printPV)

```

And print the table of P-values:

```
xtable(printPV, digits=c(0, -1))
```

	P-value
AURKA	4.5E-08
ESR1	6.5E-03
ERBB2	4.6E-01
NPI	1.8E-15
GGI	2.8E-14
GENIUS	6.1E-23
EndoPredict	7.7E-13
OncotypeDx	9.3E-14
TAMR13	2.5E-07
GENE70	1.8E-10
PIK3CA	2.3E-03
rorS	9.5E-11

The following figures represent the risk score performances measured by the concordance index each of the prognostic predictors.

```
RiskPList <- c("AURKA","ESR1","ERBB2","NPI", "GGI", "GENIUS",
               "EndoPredict","OncotypeDx","TAMR13","GENE70","PIK3CA","rorS")
datasetListF <- c("MAINZ","TRANSBIG","UPP","UNT","NKI", "Overall")
myspace <- " "
par(mfrow=c(2,2))
for (RP in RiskPList)
{
  #<<forestplotDat,fig=TRUE>>=
  ## Forestplot
  tt <- rbind(resMatrix[[RP]][1:5,],
              "Overall"=resMatrix[[RP]][6,])

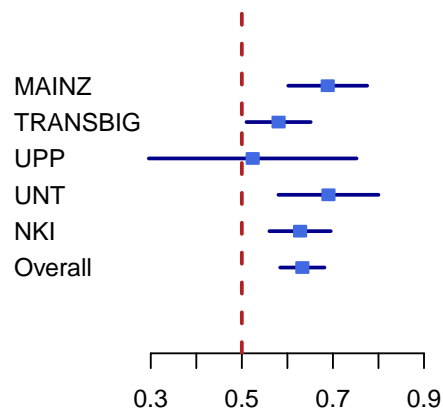
  tt <- as.data.frame(tt)
  labeltext <- (datasetListF)

  r.mean <- c(tt$cindex)
  r.lower <- c(tt$lower)
  r.upper <- c(tt$upper)

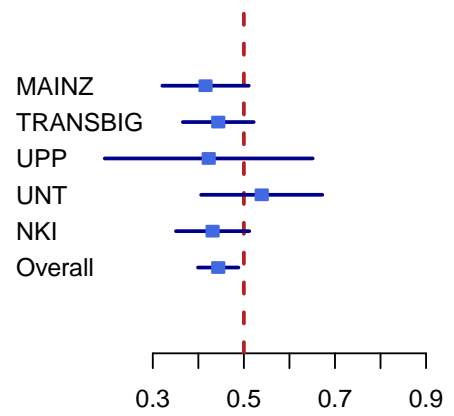
  metaplot.surv(mn=r.mean, lower=r.lower, upper=r.upper, labels=labeltext, xlim=c(0.3,0.9),
                boxsize=0.5, zero=0.5,
                col=meta.colors(box="royalblue",line="darkblue",zero="firebrick"),
                main=paste(RP))
}
```



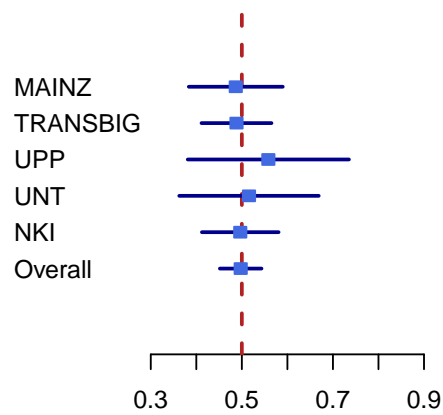
**AURKA**



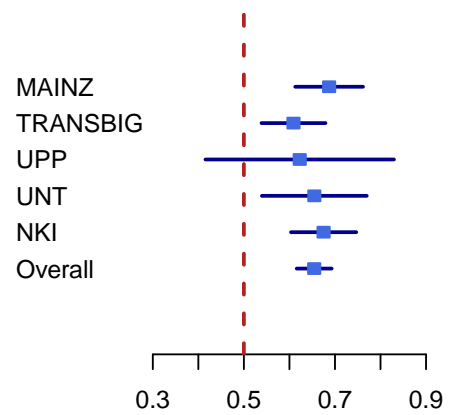
**ESR1**



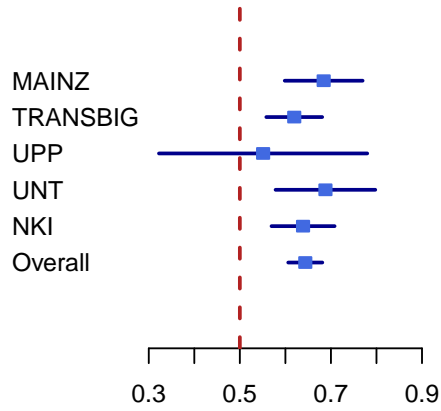
**ERBB2**



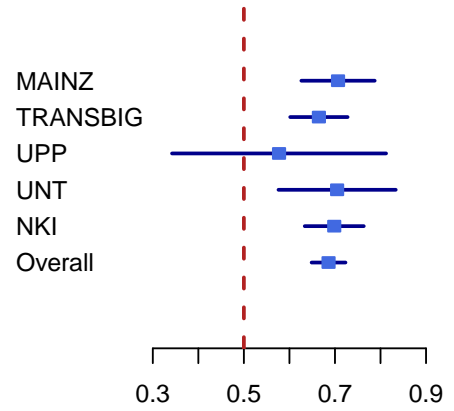
**NPI**



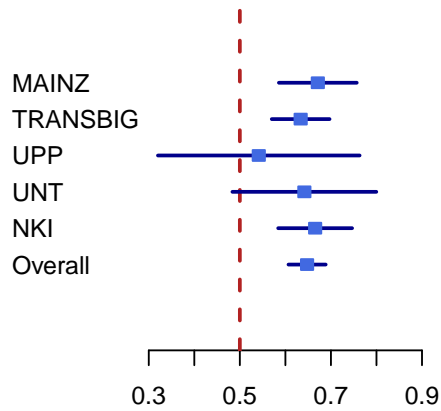
### GGI



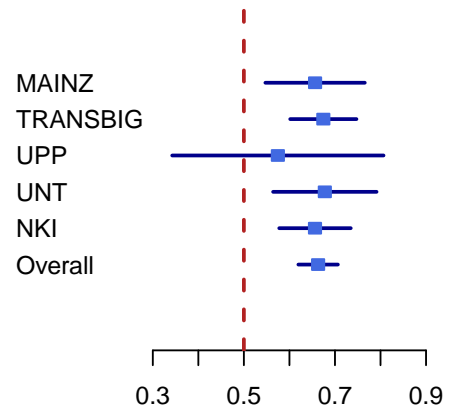
### GENIUS

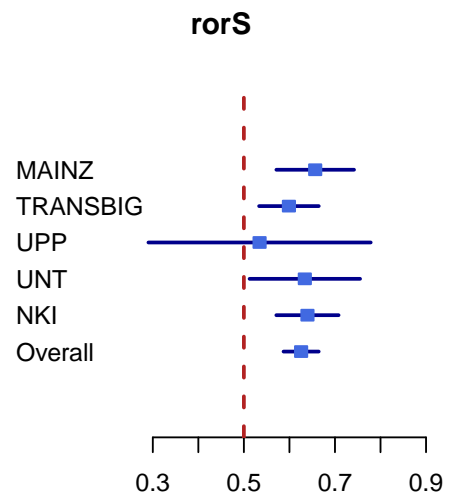
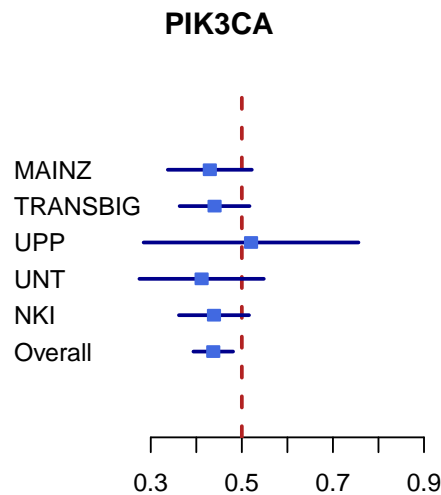
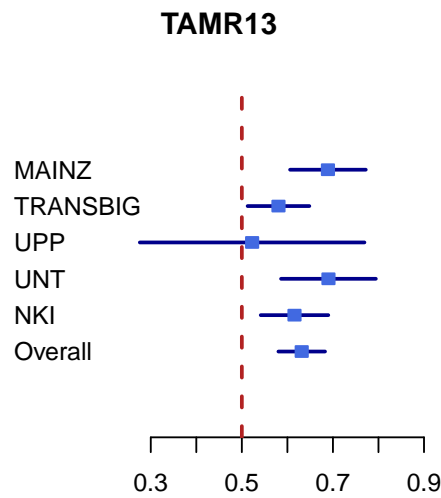


### EndoPredict



### OncotypeDx





```
##@
#
```

We can also represent the overall estimates across all prognostic predictors, across all the datasets.

```
## Overall Forestplot
mybigspace <- " "
tt <- rbind("OverallA"=resMatrix[["AURKA"]][6,],
            "OverallE1"=resMatrix[["ESR1"]][6,],
            "OverallE2"=resMatrix[["ERBB2"]][6,],
            "OverallN"=resMatrix[["NPI"]][6,],
            "OverallM"=resMatrix[["GGI"]][6,],
            "OverallG"=resMatrix[["GENIUS"]][6,],
            "OverallE3"=resMatrix[["EndoPredict"]][6,],
```

```

    "OverallOD"=resMatrix[["OncotypeDx"]][6,],
    "OverallT"=resMatrix[["TAMR13"]][6,],
    "OverallG70"=resMatrix[["GENE70"]][6,],
    "OverallP"=resMatrix[["PIK3CA"]][6,],
    "OverallR"=resMatrix[["rorS"]][6,]
  )

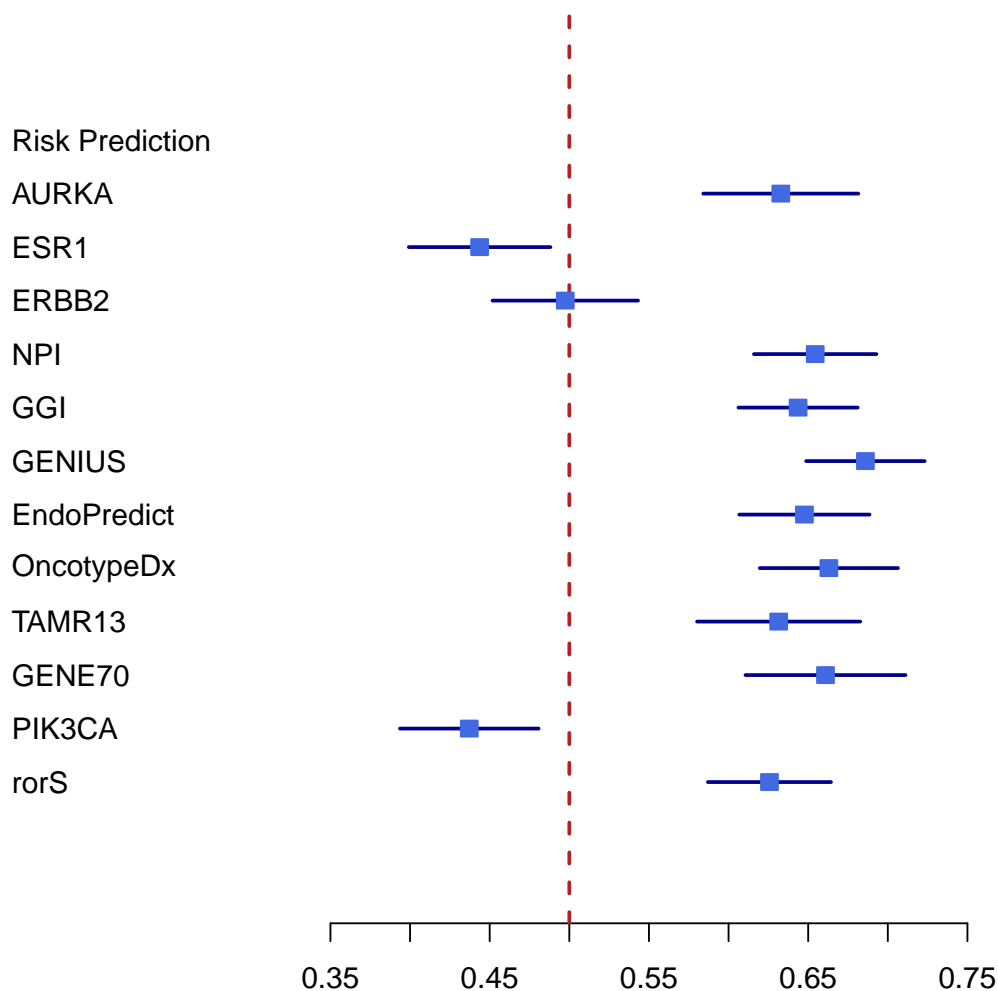
tt <- as.data.frame(tt)
labeltext <- cbind(c("Risk Prediction", "AURKA", "ESR1", "ERBB2", "NPI",
                    "GGI", "GENIUS", "EndoPredict", "OncotypeDx", "TAMR13", "GENE70", "PIK3CA", "rorS"))

r.mean <- c(NA, tt$cindex)
r.lower <- c(NA, tt$lower)
r.upper <- c(NA, tt$upper)

metaplot.surv(mn=r.mean, lower=r.lower, upper=r.upper, labels=labeltext, xlim=c(0.35, 0.75),
              boxsize=0.5, zero=0.5,
              col=meta.colors(box="royalblue", line="darkblue", zero="firebrick"),
              main="Overall Concordance Index")

```

## Overall Concordance Index



In order to assess the difference between the risk scores, we compute the concordance indices with their p-values and compare the estimates with the `cindex.comp.meta` with a paired student t test.

```
cc.res <- complete.cases(res)
datasetList <- c("MAINZ", "TRANSBIG", "UPP", "UNT", "NKI")
riskPList <- c("AURKA", "ESR1", "ERBB2", "NPI", "GGI", "GENIUS",
               "EndoPredict", "OncotypeDx", "TAMR13", "GENE70", "PIK3CA", "rorS")
setT <- setE <- NULL
resMatrixFull <- as.list(NULL)

for(i in datasetList)
{
  dataset.only <- ddemot[, "dataset"] == i
  patientsAll <- cc.res & dataset.only
}
```

```

## set type of available survival data
if(i == "UPP") {
  setT <- "t.rfs"
  setE <- "e.rfs"
} else {
  setT <- "t.dmfs"
  setE <- "e.dmfs"
}

## cindex and p-value computation per algorithm
for (Dat in riskPList)
{
  cindex <- t(apply(X=t(res[patientsAll,Dat]), MARGIN=1, function(x, y, z) {
    tt <- concordance.index(x=x, surv.time=y, surv.event=z, method="noether", na.rm=TRUE);
    return(tt); },
    y=ddemot[patientsAll,setT], z=ddemot[patientsAll, setE]))

  resMatrixFull[[Dat]] <- rbind(resMatrixFull[[Dat]], cindex)
}

for(i in names(resMatrixFull)){
  rownames(resMatrixFull[[i]]) <- datasetList
}

ccmData <- tt <- rr <- NULL
for(i in 1:length(resMatrixFull)){
  tt <- NULL
  for(j in 1:length(resMatrixFull)){
    if(i != j) { rr <- cindex.comp.meta(list.cindex1=resMatrixFull[[i]],
                                       list.cindex2=resMatrixFull[[j]], hetero=TRUE)$p.value }

    else { rr <- 1 }
    tt <- cbind(tt, rr)
  }
  ccmData <- rbind(ccmData, tt)
}
ccmData <- as.data.frame(ccmData)
colnames(ccmData) <- riskPList
rownames(ccmData) <- riskPList

```

Table 2 displays the uncorrected p-values for the comparison of the different methods.

Table 3 displays the corrected p-values using the Holms method, to correct for multiple testing.

```

#kable(ccmData,format = "latex")
xtable(ccmData[,1:6], digits=c(0, rep(-1,ncol(ccmData[,1:6]))),
       size="footnotesize")

xtable(ccmData[,7:12], digits=c(0, rep(-1,ncol(ccmData[,7:12]))),
       size="footnotesize",caption="Uncorrected p-values for the Comparison of Different Methods")

ccmDataPval <- matrix(p.adjust(data.matrix(ccmData), method="holm"),ncol=length(riskPList),
                    dimnames=list(rownames(ccmData),colnames(ccmData)))

```

	AURKA	ESR1	ERBB2	NPI	GGI	GENIUS
AURKA	1.0E+00	1.0E-07	5.0E-05	7.8E-01	6.9E-01	9.8E-01
ESR1	1.0E+00	1.0E+00	9.5E-01	1.0E+00	1.0E+00	1.0E+00
ERBB2	1.0E+00	4.6E-02	1.0E+00	1.0E+00	1.0E+00	1.0E+00
NPI	2.2E-01	3.5E-11	2.8E-07	1.0E+00	3.3E-01	9.0E-01
GGI	3.1E-01	5.0E-10	1.3E-06	6.7E-01	1.0E+00	9.7E-01
GENIUS	2.3E-02	2.2E-15	4.8E-10	1.0E-01	2.9E-02	1.0E+00
EndoPredict	2.7E-01	2.3E-09	1.1E-06	6.1E-01	4.2E-01	9.4E-01
OncotypeDx	1.2E-01	9.7E-10	2.4E-07	3.7E-01	1.8E-01	8.2E-01
TAMR13	5.2E-01	1.6E-07	7.7E-05	7.9E-01	6.9E-01	9.8E-01
GENE70	1.5E-01	9.1E-09	3.1E-06	4.1E-01	2.3E-01	8.2E-01
PIK3CA	1.0E+00	5.9E-01	9.8E-01	1.0E+00	1.0E+00	1.0E+00
rorS	6.2E-01	1.2E-08	1.8E-05	8.8E-01	8.3E-01	1.0E+00

	EndoPredict	OncotypeDx	TAMR13	GENE70	PIK3CA	rorS
AURKA	7.3E-01	8.8E-01	4.8E-01	8.5E-01	4.1E-08	3.8E-01
ESR1	1.0E+00	1.0E+00	1.0E+00	1.0E+00	4.1E-01	1.0E+00
ERBB2	1.0E+00	1.0E+00	1.0E+00	1.0E+00	2.2E-02	1.0E+00
NPI	3.9E-01	6.3E-01	2.1E-01	5.9E-01	3.7E-12	1.2E-01
GGI	5.8E-01	8.2E-01	3.1E-01	7.7E-01	7.8E-11	1.7E-01
GENIUS	5.6E-02	1.8E-01	2.1E-02	1.8E-01	6.0E-15	4.5E-03
EndoPredict	1.0E+00	7.6E-01	2.7E-01	7.0E-01	1.5E-10	1.5E-01
OncotypeDx	2.4E-01	1.0E+00	1.4E-01	4.7E-01	3.4E-11	4.9E-02
TAMR13	7.3E-01	8.6E-01	1.0E+00	8.4E-01	1.1E-07	4.1E-01
GENE70	3.0E-01	5.3E-01	1.6E-01	1.0E+00	1.3E-09	8.3E-02
PIK3CA	1.0E+00	1.0E+00	1.0E+00	1.0E+00	1.0E+00	1.0E+00
rorS	8.5E-01	9.5E-01	5.9E-01	9.2E-01	2.3E-09	1.0E+00

Table 2: Uncorrected p-values for the Comparison of Different Methods

```
xtable(ccmDataPval[,1:6], digits=c(0, rep(-1, ncol(ccmDataPval[,1:6]))),
       size="footnotesize")
```

```
xtable(ccmDataPval[,7:12], digits=c(0, rep(-1, ncol(ccmDataPval[,7:12]))),
       size="footnotesize", caption="Corrected p-values Using the Holm Method")
```

	AURKA	ESR1	ERBB2	NPI	GGI	GENIUS
AURKA	1.0E+00	1.3E-05	6.0E-03	1.0E+00	1.0E+00	1.0E+00
ESR1	1.0E+00	1.0E+00	1.0E+00	1.0E+00	1.0E+00	1.0E+00
ERBB2	1.0E+00	1.0E+00	1.0E+00	1.0E+00	1.0E+00	1.0E+00
NPI	1.0E+00	4.9E-09	3.5E-05	1.0E+00	1.0E+00	1.0E+00
GGI	1.0E+00	6.9E-08	1.5E-04	1.0E+00	1.0E+00	1.0E+00
GENIUS	1.0E+00	3.1E-13	6.5E-08	1.0E+00	1.0E+00	1.0E+00
EndoPredict	1.0E+00	3.1E-07	1.4E-04	1.0E+00	1.0E+00	1.0E+00
OncotypeDx	1.0E+00	1.3E-07	3.0E-05	1.0E+00	1.0E+00	1.0E+00
TAMR13	1.0E+00	2.0E-05	9.1E-03	1.0E+00	1.0E+00	1.0E+00
GENE70	1.0E+00	1.2E-06	3.7E-04	1.0E+00	1.0E+00	1.0E+00
PIK3CA	1.0E+00	1.0E+00	1.0E+00	1.0E+00	1.0E+00	1.0E+00
rorS	1.0E+00	1.5E-06	2.2E-03	1.0E+00	1.0E+00	1.0E+00

	EndoPredict	OncotypeDx	TAMR13	GENE70	PIK3CA	rorS
AURKA	1.0E+00	1.0E+00	1.0E+00	1.0E+00	5.3E-06	1.0E+00
ESR1	1.0E+00	1.0E+00	1.0E+00	1.0E+00	1.0E+00	1.0E+00
ERBB2	1.0E+00	1.0E+00	1.0E+00	1.0E+00	1.0E+00	1.0E+00
NPI	1.0E+00	1.0E+00	1.0E+00	1.0E+00	5.2E-10	1.0E+00
GGI	1.0E+00	1.0E+00	1.0E+00	1.0E+00	1.1E-08	1.0E+00
GENIUS	1.0E+00	1.0E+00	1.0E+00	1.0E+00	8.6E-13	5.2E-01
EndoPredict	1.0E+00	1.0E+00	1.0E+00	1.0E+00	2.0E-08	1.0E+00
OncotypeDx	1.0E+00	1.0E+00	1.0E+00	1.0E+00	4.9E-09	1.0E+00
TAMR13	1.0E+00	1.0E+00	1.0E+00	1.0E+00	1.4E-05	1.0E+00
GENE70	1.0E+00	1.0E+00	1.0E+00	1.0E+00	1.7E-07	1.0E+00
PIK3CA	1.0E+00	1.0E+00	1.0E+00	1.0E+00	1.0E+00	1.0E+00
rorS	1.0E+00	1.0E+00	1.0E+00	1.0E+00	3.0E-07	1.0E+00

Table 3: Corrected p-values Using the Holm Method

## 6 References

The following is a list of publications that have cited genefu (Version 1) in the past.

### Where genefu was used in subtyping

- Larsen, M.J. et al., 2014. Microarray-Based RNA Profiling of Breast Cancer: Batch Effect Removal Improves Cross-Platform Consistency. *BioMed Research International*, 2014, pp.1-11.
- Miller, T.W. et al., 2011. A gene expression signature from human breast cancer cells with acquired hormone independence identifies MYC as a mediator of antiestrogen resistance. *Clinical cancer research : an official journal of the American Association for Cancer Research*, 17(7), pp.2024-2034.
- Karn, T. et al., 2011. Homogeneous Datasets of Triple Negative Breast Cancers Enable the Identification of Novel Prognostic and Predictive Signatures S. Ranganathan, ed. *PloS one*, 6(12), p.e28403.

### Where genefu was used in Comparing Subtyping Schemes

- Haibe-Kains, B. et al., 2012. A three-gene model to robustly identify breast cancer molecular subtypes. *Journal of the National Cancer Institute*, 104(4), pp.311-325.
- Curtis, C. et al., 2012. The genomic and transcriptomic architecture of 2,000 breast tumours reveals novel subgroups. *Nature*.
- Balko, J.M. et al., 2012. Profiling of residual breast cancers after neoadjuvant chemotherapy identifies DUSP4 deficiency as a mechanism of drug resistance. *Nature medicine*, 18(7), pp.1052-1059.



Paquet, E.R. and Hallett, M.T., 2015. Absolute Assignment of Breast Cancer Intrinsic Molecular Subtype. *Journal of the National Cancer Institute*, 107(1), pp.dju357-dju357.

Patil, P. et al., 2015. Test set bias affects reproducibility of gene signatures. *Bioinformatics*, p.btv157.

## Where genefu was used to Compute Prognostic gene signature scores

Haibe-Kains, B. et al., 2008. A comparative study of survival models for breast cancer prognostication based on microarray data: does a single gene beat them all? *Bioinformatics*, 24(19), pp.2200-2208.

Haibe-Kains, B. et al., 2010. A fuzzy gene expression-based computational approach improves breast cancer prognostication. *Genome biology*, 11(2), p.R18.

Madden, S.F. et al., 2013. BreastMark: An Integrated Approach to Mining Publicly Available Transcriptomic Datasets Relating to Breast Cancer Outcome. *Breast Cancer Research*, 15(4), p.R52.

Fumagalli, D. et al., 2014. Transfer of clinically relevant gene expression signatures in breast cancer: from Affymetrix microarray to Illumina RNA-Sequencing technology. *BMC genomics*, 15(1), p.1008.

Beck A.H. et al., 2013. Significance Analysis of Prognostic Signatures. *PLoS Computational Biology*, 9(1), e1002875.

## As well as other publications

APOBEC3B expression in breast cancer reflects cellular proliferation, while a deletion polymorphism is associated with immune activation. Cescon DW, Haibe-Kains B, Mak TW. *Proc Natl Acad Sci U S A*. 2015 Mar 3;112(9):2841-6. doi: 10.1073/pnas.1424869112. Epub 2015 Feb 17. PMID: 25730878

Radovich M. et al., 2014. Characterizing the heterogeneity of triple-negative breast cancers using microdissected normal ductal epithelium and RNA-sequencing. *Breast cancer research and treatment*, 143(1), pp.57-68.

Tramm T. et al., 2014. Relationship between the prognostic and predictive value of the intrinsic subtypes and a validated gene profile predictive of loco-regional control and benefit from post-mastectomy radiotherapy in patients with high-risk breast cancer. *Acta Oncologica* 53(10), pp.1337-1346.

Doan, T.B. et al., 2014. Breast cancer prognosis predicted by nuclear receptor-coregulator networks. *Molecular oncology* 8(5), pp.998-1013.

## 7 Session Info

```
toLatex(sessionInfo())
```

- R version 3.5.0 (2018-04-23), x86\_64-w64-mingw32
- Locale: LC\_COLLATE=C, LC\_CTYPE=English\_United States.1252, LC\_MONETARY=English\_United States.1252, LC\_NUMERIC=C, LC\_TIME=English\_United States.1252
- Running under: Windows Server 2012 R2 x64 (build 9600)
- Matrix products: default
- Base packages: base, datasets, grDevices, graphics, methods, parallel, stats, utils

- Other packages: AIMS 1.12.0, Biobase 2.40.0, BiocGenerics 0.26.0, biomaRt 2.36.0, breastCancerMAINZ 1.17.0, breastCancerNKI 1.17.0, breastCancerTRANSBIG 1.17.0, breastCancerUNT 1.17.0, breastCancerUPP 1.17.0, caret 6.0-79, cluster 2.0.7-1, e1071 1.6-8, genefu 2.12.0, ggplot2 2.2.1, iC10 1.1.3, iC10TrainingData 1.0.1, lattice 0.20-35, limma 3.36.0, mclust 5.4, pamr 1.55, proclim 2018.04.18, rmeta 3.0, survcomp 1.30.0, survival 2.42-3, xtable 1.8-2
- Loaded via a namespace (and not attached): AnnotationDbi 1.42.0, CVST 0.2-1, DBI 0.8, DEoptimR 1.0-8, DRR 0.0.3, IRanges 2.14.0, KernSmooth 2.23-15, MASS 7.3-50, Matrix 1.2-14, ModelMetrics 1.1.0, R6 2.2.2, RCurl 1.95-4.10, RSQLite 2.1.0, Rcpp 0.12.16, RcppRoll 0.2.2, S4Vectors 0.18.0, SuppDists 1.1-9.4, XML 3.98-1.11, abind 1.4-5, amap 0.8-14, assertthat 0.2.0, bindr 0.1.1, bindrcpp 0.2.2, bit 1.1-12, bit64 0.9-7, bitops 1.0-6, blob 1.1.1, bootstrap 2017.2, broom 0.4.4, class 7.3-14, codetools 0.2-15, colorspace 1.3-2, compiler 3.5.0, ddalpha 1.3.3, digest 0.6.15, dimRed 0.1.0, dplyr 0.7.4, evaluate 0.10.1, foreach 1.4.4, foreign 0.8-70, geometry 0.3-6, glue 1.2.0, gower 0.1.2, grid 3.5.0, gtable 0.2.0, highr 0.6, httr 1.3.1, ipred 0.9-6, iterators 1.0.9, kernlab 0.9-26, knitr 1.20, lava 1.6.1, lazyeval 0.2.1, lubridate 1.7.4, magic 1.5-8, magrittr 1.5, memoise 1.1.0, mnormt 1.5-5, munsell 0.4.3, nlme 3.1-137, nnet 7.3-12, pillar 1.2.2, pkgconfig 2.0.1, plyr 1.8.4, prettyunits 1.0.2, progress 1.1.2, psych 1.8.3.3, purrr 0.2.4, recipes 0.1.2, reshape2 1.4.3, rlang 0.2.0, robustbase 0.93-0, rpart 4.1-13, scales 0.5.0, sfsmisc 1.1-2, splines 3.5.0, stats4 3.5.0, stringi 1.1.7, stringr 1.3.0, survivalROC 1.0.3, tibble 1.4.2, tidyr 0.8.0, tidyselect 0.2.4, timeDate 3043.102, tools 3.5.0, withr 2.1.2