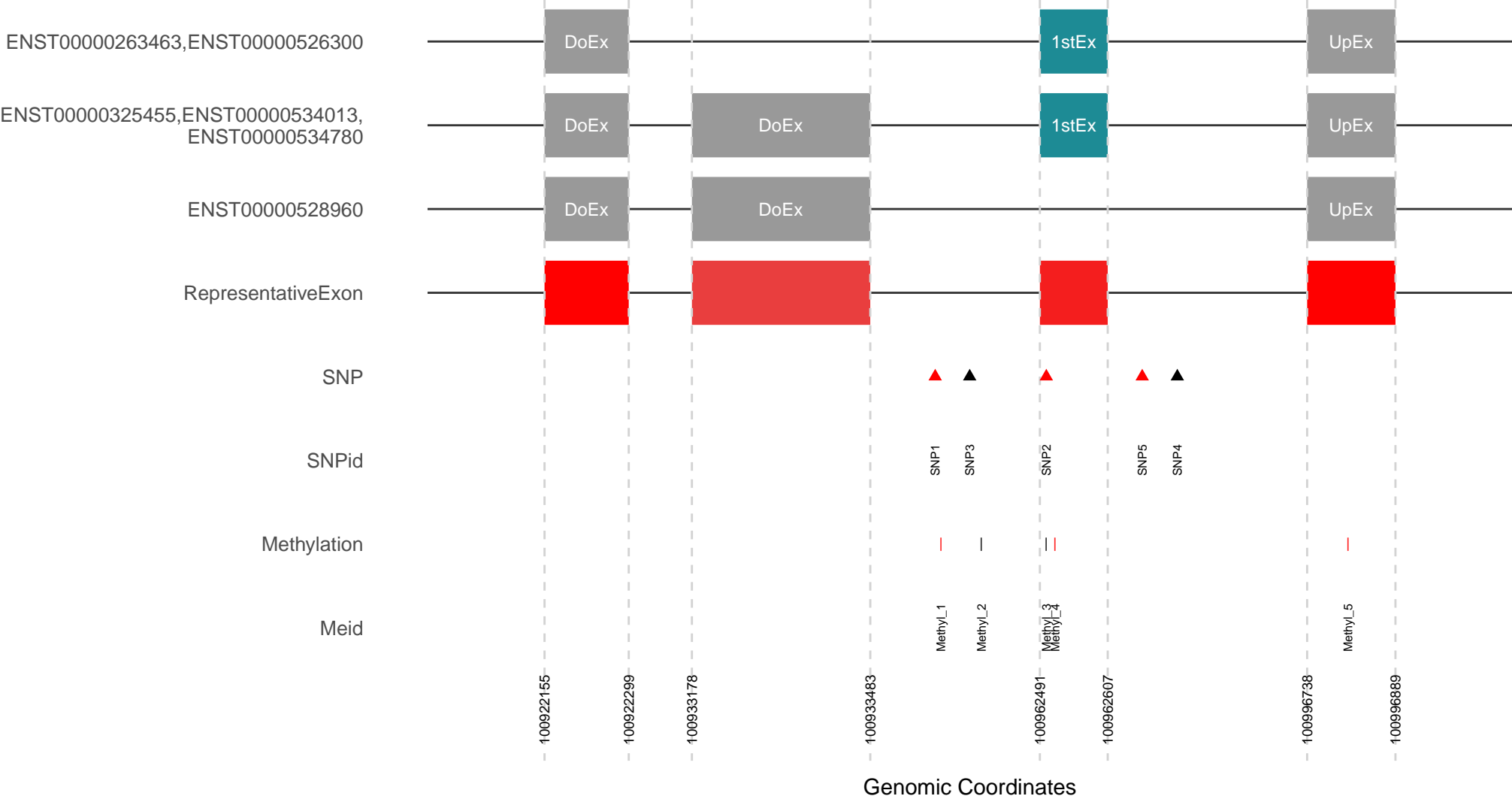
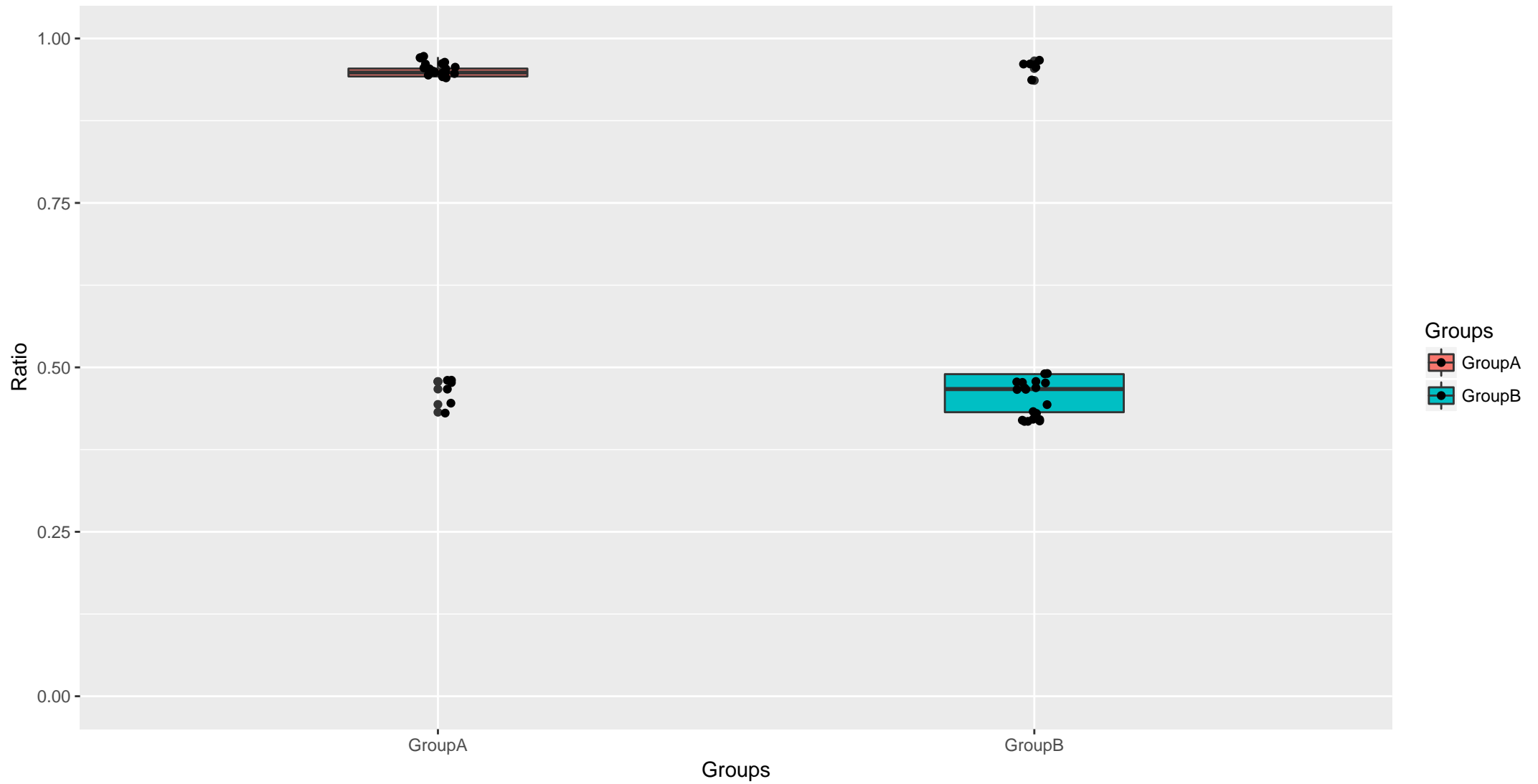


Alternative Splicing Model for Index ES3



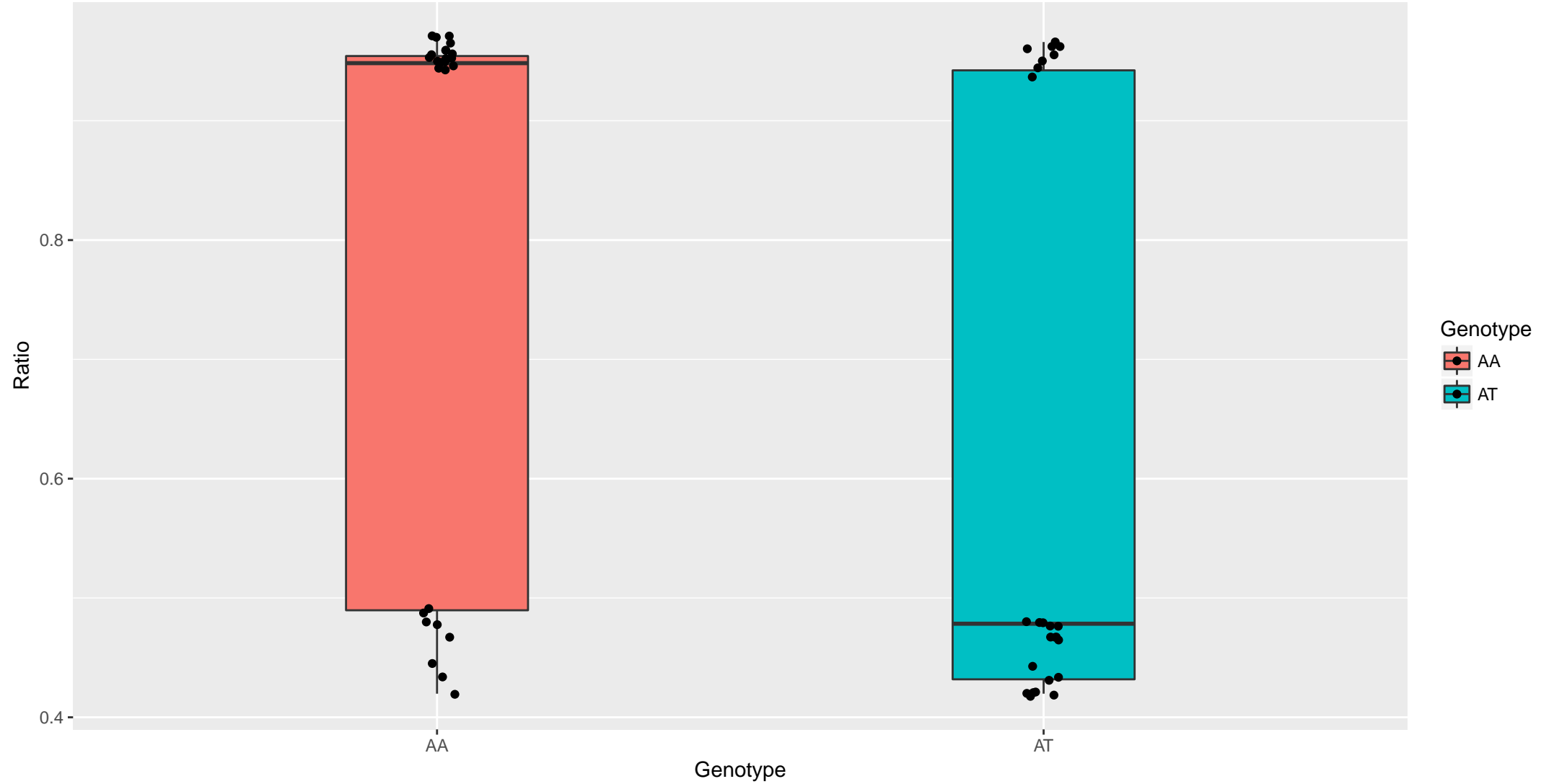
Index	EnslD	Nchr	Strand	1stEX	DownEX	UpEX	Types
ES3	ENSG000000082175	11	-	100962491-100962607	100922155-100933483	100996738-100996889	ES

Differential PSI Levels between Conditions for Index ES3



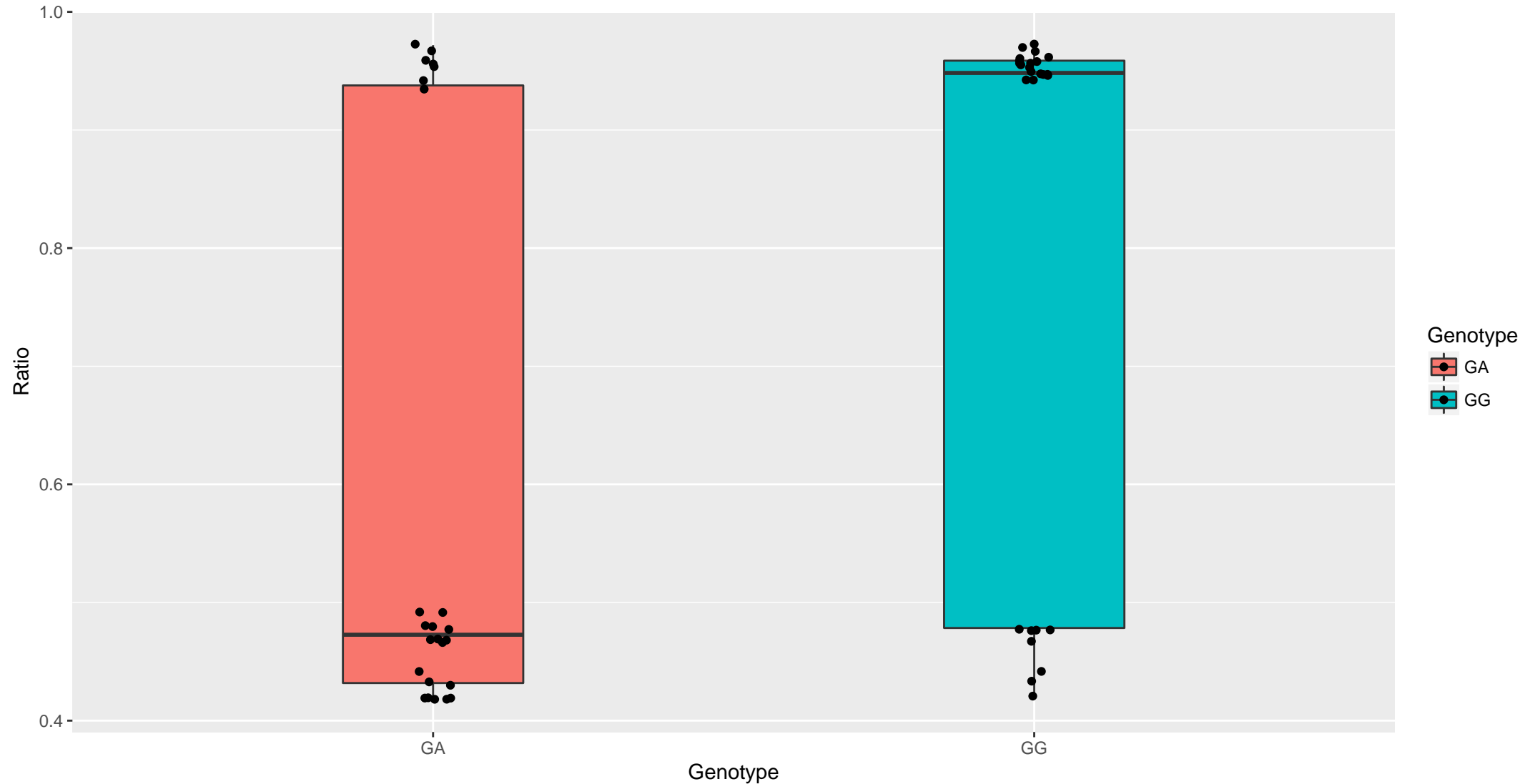
Index	EnsID	Diff.P	Fdr.p	Nofsam
ES3	ENSG00000082175	9.4191e-05	9.4191e-05	Total:50 A:25,B:25

sQTLs Results of SNP1 for Index ES3



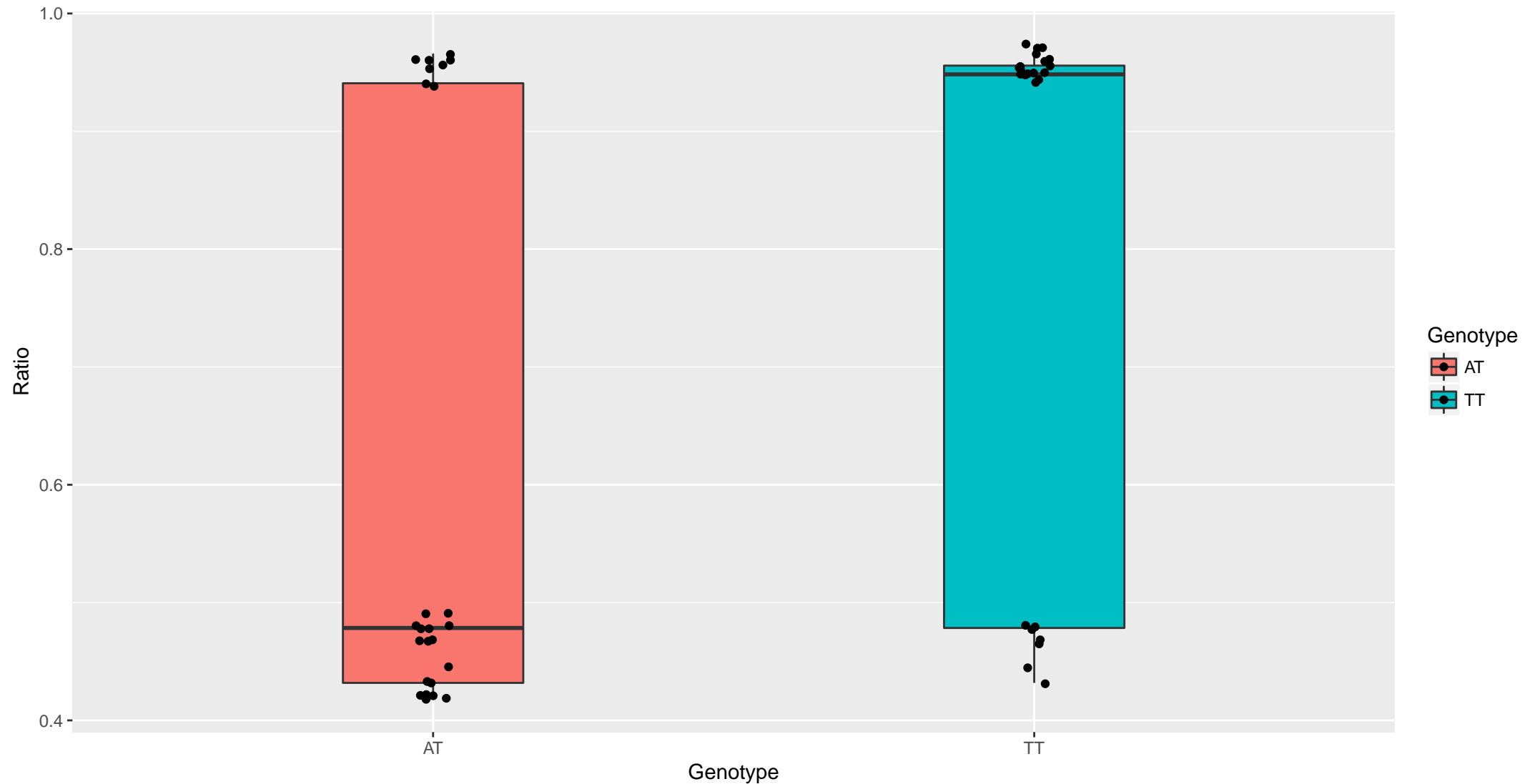
SNP	Index	EnsID	pByGeno	FdrByGeno	Nofsam
SNP1	ES3	ENSG00000082175	0.008	0.0133	Total:50 A:25,B:25

sQTLs Results of SNP2 for Index ES3



SNP	Index	EnsID	pByGeno	FdrByGeno	Nofsam
SNP2	ES3	ENSG00000082175	0.0035	0.0087	Total:50 A:25,B:25

sQTLs Results of SNP5 for Index ES3



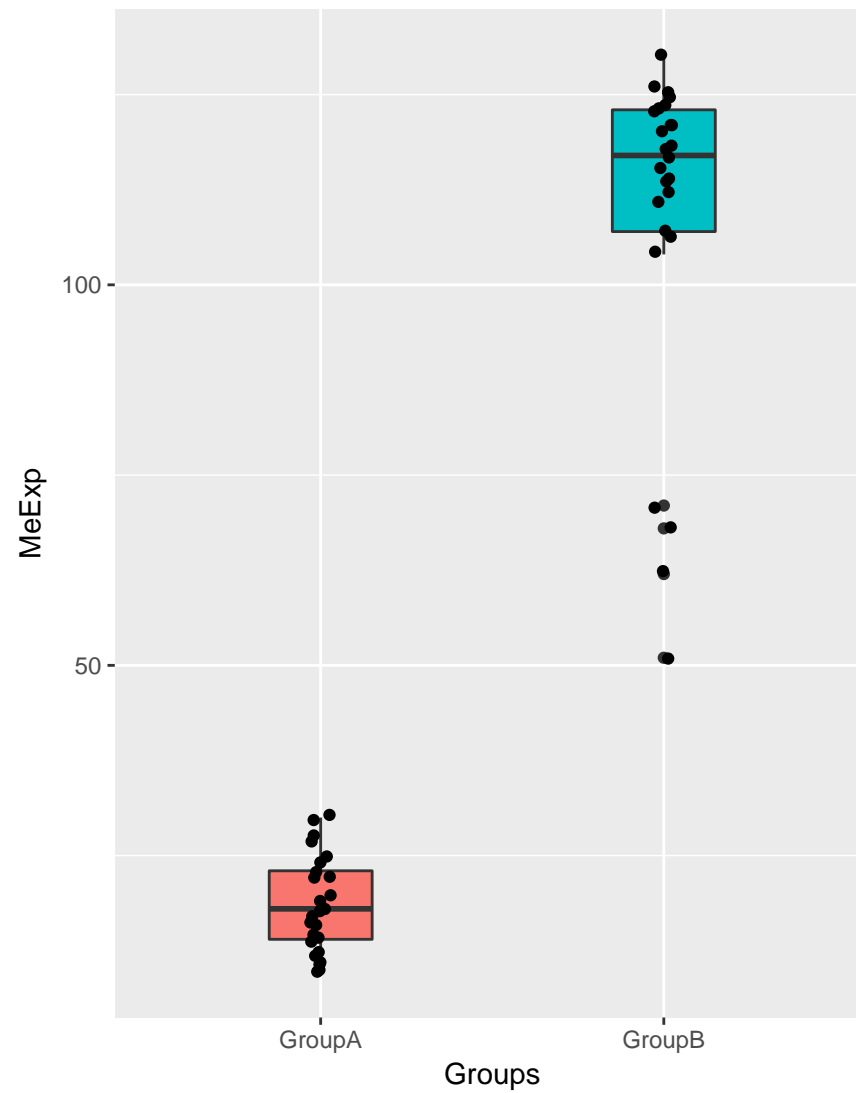
SNP	Index	EnsID	pByGeno	FdrByGeno	Nofsam
SNP5	ES3	ENSG00000082175	0.0031	0.0087	Total:50 A:25,B:25

Me-sQTLs Results of Methyl_1 for Index ES3



Groups

- GroupA
- GroupB

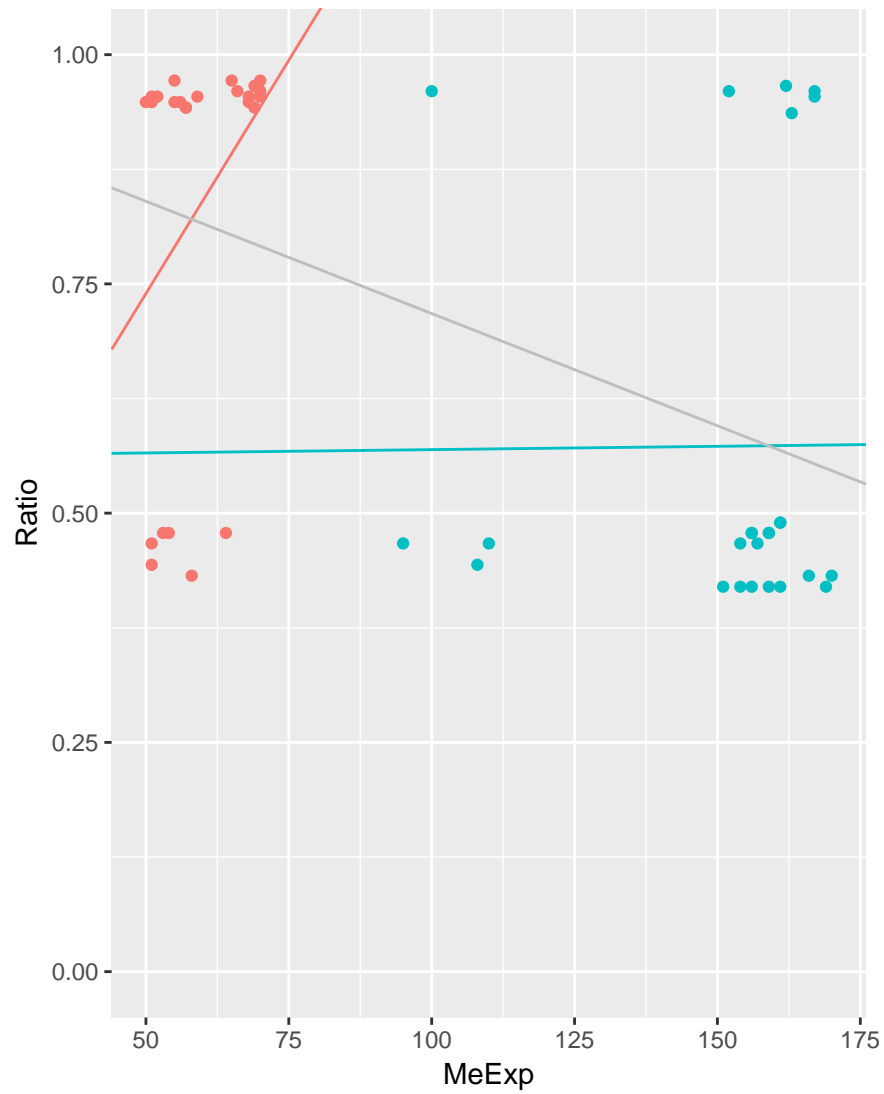


Groups

- GroupA
- GroupB

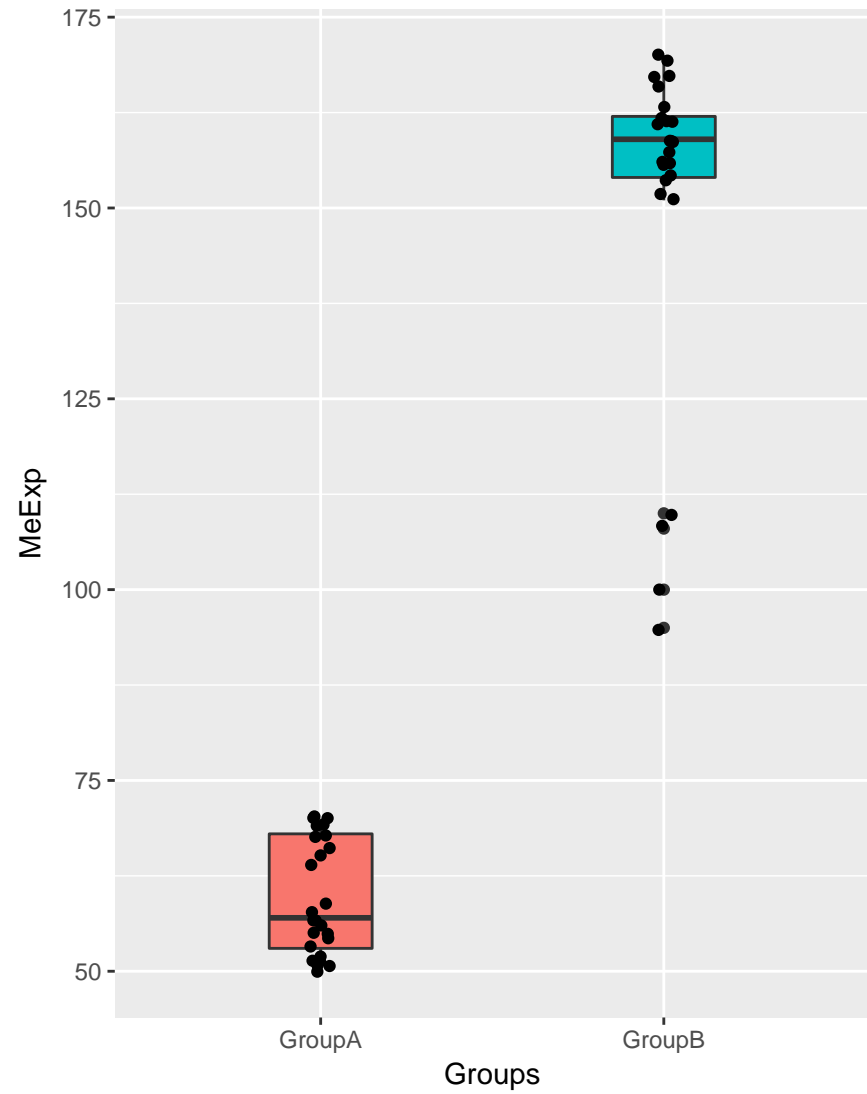
MeID	Index	EnsID	pByMet	fdrByMet	pByGroups	fdrByGroups	Nofsam
Methyl_1	ES3	ENSG00000082175	7.0677e-05	3e-04	3.9962e-18	9.9904e-18	Total:50 A:25,B:25

Me-sQTLs Results of MethyI_4 for Index ES3



Groups

- GroupA
- GroupB



Groups

- GroupA
- GroupB

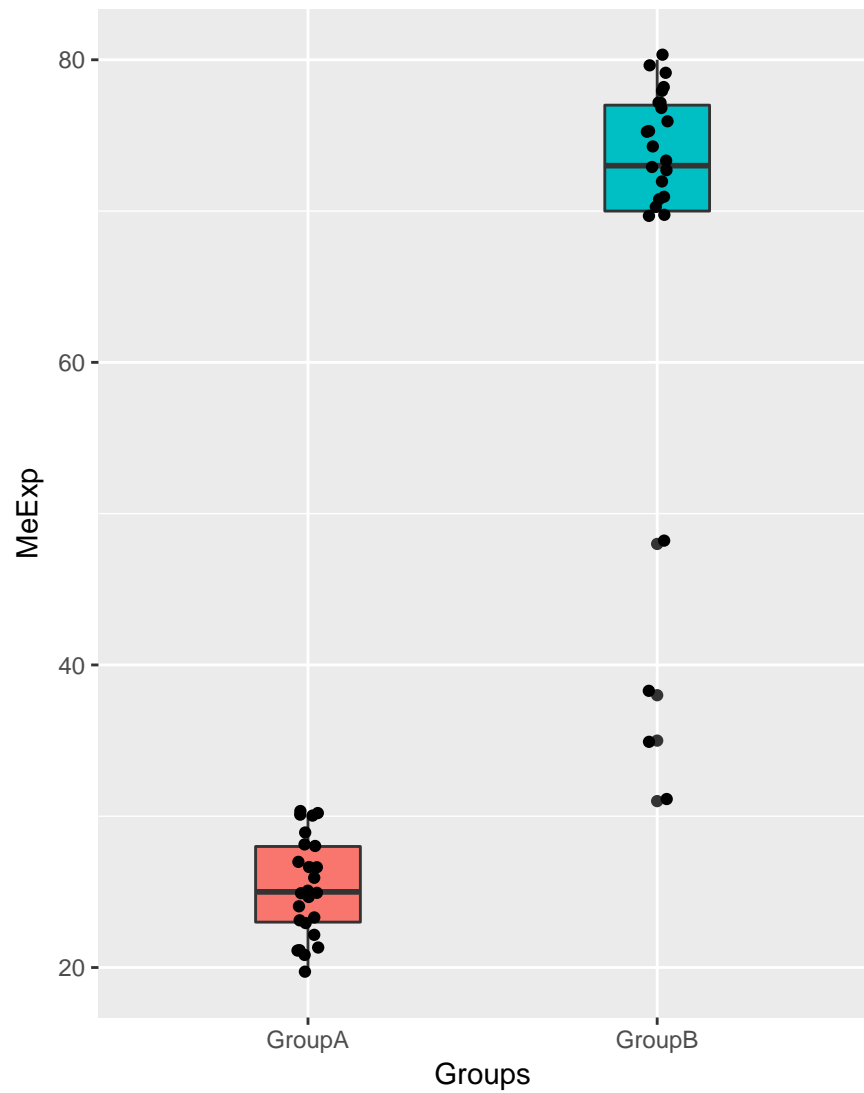
MeID	Index	EnsID	pByMet	fdrByMet	pByGroups	fdrByGroups	Nofsam
MethyI_4	ES3	ENSG00000082175	5e-04	9e-04	1.7007e-18	8.5033e-18	Total:50 A:25,B:25

Me-sQTLs Results of MethyI_5 for Index ES3



Groups

- GroupA
- GroupB

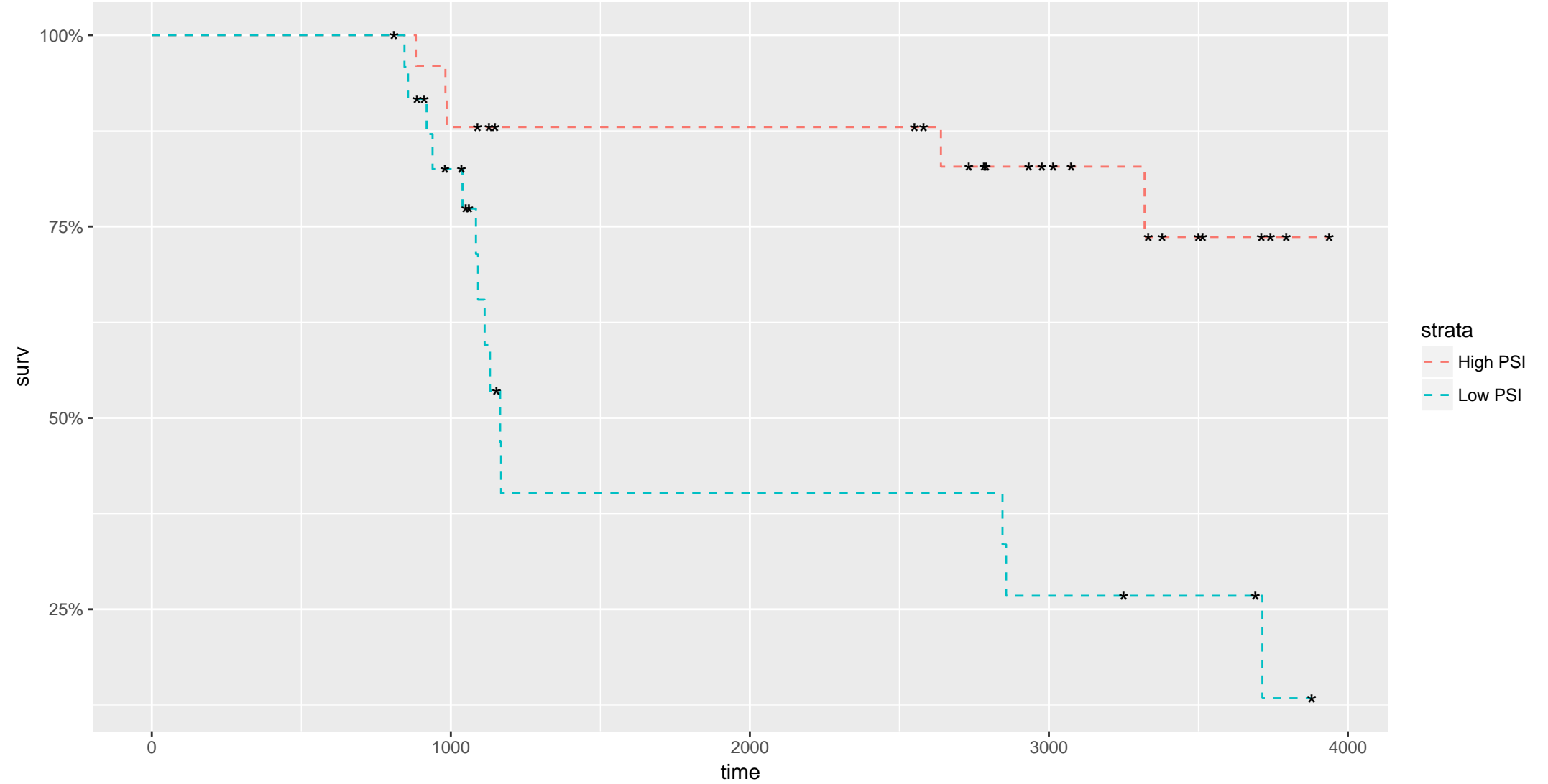


Groups

- GroupA
- GroupB

MeID	Index	EnsID	pByMet	fdrByMet	pByGroups	fdrByGroups	Nofsam
MethyI_5	ES3	ENSG00000082175	1e-04	3e-04	2.285e-14	3.8084e-14	Total:50 A:25,B:25

Clinical Outcomes for Index ES3



Index	EnsID	Pvalue	Fdr.p	Nofsam
ES3	ENSG00000082175	9e-04	9e-04	Total:50 A:25,B:25