

# baySeq: Empirical Bayesian analysis of patterns of differential expression in count data

Thomas J. Hardcastle

April 16, 2015

## 1 Introduction

---

This vignette is intended to give a rapid introduction to the commands used in implementing empirical Bayesian methods of evaluating differential expression in high-throughput sequencing data by means of the baySeq R package. For fuller details on the methods being used, consult Hardcastle & Kelly (2010) [1] and Hardcastle (2015) [2].

We assume that we have data from a set of sequencing or other high-throughput experiments, arranged in an array such that each column describes a sample and each row describes some genomic event for which data have been acquired. For example, the rows may correspond to the different sequences observed in a sequencing experiment. The data then consists of the number of times each sequence is observed in each sample. We wish to determine which, if any, rows of the data correspond to some patterns of differential expression across the samples.

baySeq uses empirical Bayesian methods to estimate the posterior likelihoods of each of a set of models that define patterns of differential expression for each row. This approach begins by considering a distribution for the row defined by a set of underlying parameters for which some prior distribution exists. By estimating this prior distribution from the data, we are able to assess, for a given model about the relatedness of our underlying parameters for multiple libraries, the posterior likelihood of the model.

In forming a set of models upon the data, we consider which patterns are biologically likely to occur in the data. For example, suppose we have count data from some organism in condition  $A$  and condition  $B$ . Suppose further that we have two biological replicates for each condition, and hence four libraries  $A_1, A_2, B_1, B_2$ , where  $A_1, A_2$  and  $B_1, B_2$  are the replicates. It is reasonable to suppose that at least some of the rows may be unaffected by our experimental conditions  $A$  and  $B$ , and the count data for each sample in these rows will be *equivalent*. These data need not in general be identical across each sample due to random effects and different library sizes, but they will share the same underlying parameters. However, some of the rows may be influenced by the different experimental conditions  $A$  and  $B$ . The count data for the samples  $A_1$  and  $A_2$  will then be equivalent, as will the count data for the samples  $B_1$  and  $B_2$ . However, the count data between samples  $A_1, A_2, B_1, B_2$  will not be equivalent. For such a row, the data from samples  $A_1$  and  $A_2$  will then share the same set of underlying parameters, the data from samples  $B_1$  and  $B_2$  will share the same set of underlying parameters, but, crucially, the two sets will not be identical. However, baySeq takes an alternative approach to analysis that allows more complicated patterns of differential expression than simple pairwise comparison, and thus is able to cope with more complex experimental designs (Section 5.5).

In this initial vignette, we consider RNA-seq type data assumed to follow a negative binomial distribution. Alternative scenarios are discussed in the vignette *Advanced analysis using baySeq; generic distribution definitions*.

## 2 Preparation

---

We begin by loading the baySeq package.

```
> library(baySeq)
```

Note that because the experiments that baySeq is designed to analyse are usually massive, we should use (if possible) parallel processing as implemented by the snow package. We use the parallel package (if it exists), and define a *cluster*. If parallel is not present, we can proceed anyway with a NULL cluster. Results may be slightly different depending on whether or not a cluster is used owing to the non-deterministic elements of the method.

```
> if(require("parallel")) cl <- makeCluster(8) else cl <- NULL
```

We load a simulated data set consisting of count data on one thousand counts.

```
> data(simData)
> simData[1:10,]

      [,1] [,2] [,3] [,4] [,5] [,6] [,7] [,8] [,9] [,10]
[1,]    4    1    5    2    3    0    1    1    1    0
[2,]    1    0    9    6    5    0    1    0    0    1
[3,]    9    2    5    5   14    2    3    1    0    4
[4,]    7    3    8    2    2    0    1    0    1    0
[5,]    2    2    4    7    0    0    0    0    0    1
[6,]    2    1    0    1    0    4    3    5    5    3
[7,]    9    8    8    8    9    1    2    1    0    0
[8,]    9    5    7    8    7    1    2    0    1    2
[9,]    6    2    2    3    0    0    0    0    0    0
[10,]   1    0    2    0    1    3   17    2    2   10
```

The data are simulated such that the first hundred counts show differential expression between the first five libraries and the second five libraries. Our replicate structure, used to estimate the prior distributions on the data, can thus be defined as

```
> replicates <- c("simA", "simA", "simA", "simA", "simA",
+                "simB", "simB", "simB", "simB", "simB")
```

We can also establish two group structures for the data.

Each member (vector) contained within the 'groups' list corresponds to one model upon the data. In this setting, a model describes the patterns of data we expect to see at least some of the tags correspond to. In this simple example, we expect that some of the tags will be equivalently expressed between all ten libraries. This corresponds to the 'NDE' model, or vector `c(1,1,1,1,1,1,1,1,1,1)` - all libraries belong to the same group for these tags.

We also expect that some tags will show differential expression between the first five libraries and the second five libraries. For these tags, the two sets of libraries belong to different groups, and so we have the model 'DE', or vector `c(1,1,1,1,1,2,2,2,2,2)` - the first five libraries belong to group 1 and the second five libraries to group 2. We thus have the following group structure

```
> groups <- list(NDE = c(1,1,1,1,1,1,1,1,1,1),
+               DE = c(1,1,1,1,1,2,2,2,2,2))
```

In a more complex experimental design (Section ??) we might have several additional models. The key to constructing vectors corresponding to a model is to see for which groups of libraries we expect equivalent expression of tags.

We note that the group for DE corresponds to the replicate structure. This will often be the case, but need not be in more complex experimental designs.

The ultimate aim of the baySeq package is to evaluate posterior likelihoods of each model for each row of the data.

We begin by combining the count data and user-defined groups into a `countData` object.

```
> CD <- new("countData", data = simData, replicates = replicates, groups = groups)
```

Library sizes can be inferred from the data if the user is not able to supply them.

```
> libsizes(CD) <- getLibsizes(CD)
```

We can then plot the data in the form of an MA-plot, suitable modified to plot those data where the data are uniformly zero (and hence the log-ratio is infinite) (Figure 1). Truly differentially expressed data can be identified in the plot by coloring these data red, while non-differentially expressed data are colored black.

```
> plotMA.CD(CD, samplesA = "simA", samplesB = "simB",
+           col = c(rep("red", 100), rep("black", 900)))
```

We can also optionally add annotation details into the `@annotation` slot of the `countData` object.

```
> CD@annotation <- data.frame(name = paste("count", 1:1000, sep = "_"))
```

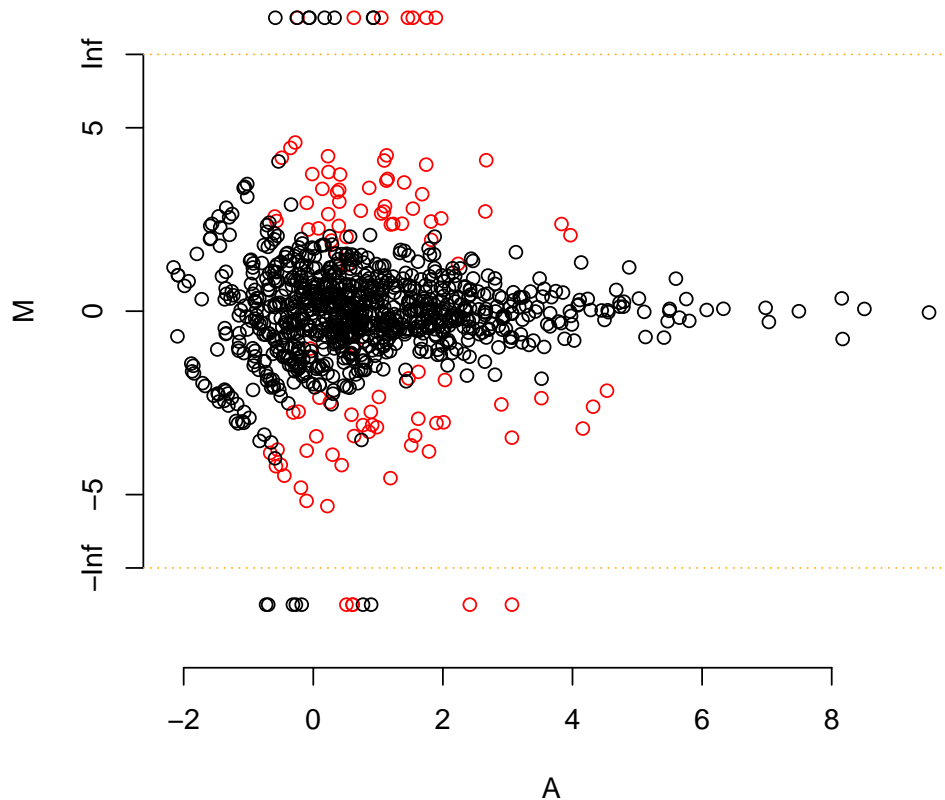


Figure 1: 'MA'-plot for count data. Where the log-ratio would be infinite (because the data in one of the sample groups consists entirely of zeros, we plot instead the log-values of the other group. Truly differentially expressed data are colored red, and non-differentially expressed data black.

### 3 Negative-Binomial Approach

We first estimate an empirical distribution on the parameters of the Negative Binomial distribution by bootstrapping from the data, taking individual counts and finding the quasi-likelihood parameters for a Negative Binomial distribution. By taking a sufficiently large sample, an empirical distribution on the parameters is estimated. A sample size of around 10000 iterations is suggested, depending on the data being used), but 1000 is used here to rapidly generate the plots and tables.

```
> CD <- getPriors.NB(CD, samplesize = 1000, estimation = "QL", cl = cl)
```

The calculated priors are stored in the `@priors` slot of the `countData` object produced as before. For the negative-binomial method, we are unable to form a conjugate prior distribution. Instead, we build an empirical prior distribution which we record in the list object `$priors` of the slot `@priors`. Each member of this list object corresponds to one of the models defined by the `group` slot of the `countData` object and contains the estimated parameters for each of the individual counts selected under the models. The vector `$sampled` contained in the slot `@priors` describes which rows were sampled to create these sets of parameters.

We then acquire posterior likelihoods, estimating the proportions of differentially expressed counts.

```
> CD <- getLikelihoods(CD, cl = cl, bootStraps = 3, verbose = FALSE)
```

```
...
```

```

> CD@estProps
numeric(0)
> CD@posteriors[1:10,]
      NDE      DE
[1,] -0.7182509 -0.668658236
[2,] -1.1044953 -0.402536516
[3,] -1.0081651 -0.453953781
[4,] -2.8017825 -0.062622239
[5,] -0.7890052 -0.605679476
[6,] -1.0411667 -0.435474739
[7,] -6.4331196 -0.001608722
[8,] -4.4751954 -0.011453337
[9,] -1.1732792 -0.370123309
[10,] -1.8065428 -0.179390934
> CD@posteriors[101:110,]
      NDE      DE
[1,] -3.509570e-02 -3.367173
[2,] -3.456222e-10 -21.785679
[3,] -4.959439e-02 -3.028572
[4,] -2.507815e-02 -3.698271
[5,] -2.022689e-05 -10.808508
[6,] -2.900704e-02 -3.554685
[7,] -5.219352e-02 -2.978780
[8,] -1.773987e-02 -4.040798
[9,] -4.623394e-02 -3.097069
[10,] -1.502412e-02 -4.205601

```

Here the assumption of a Negative Binomial distribution with priors estimated by maximum likelihood gives an estimate of

```
[1] NA
```

as the proportion of differential expressed counts in the simulated data, where in fact the proportion is known to be 0.1.

## 4 Results

---

We can ask for the top candidates for differential expression using the `topCounts` function.

```

> topCounts(CD, group = "DE")
  annotation simA.1 simA.2 simA.3 simA.4 simA.5 simB.1 simB.2 simB.3 simB.4 simB.5
1  count_80      1      1      0      1      1     13     21      8      6     20
2  count_78      1      1      0      1      1      8     13      7      9     10
3  count_66      0      0      0      0      0     15     10      4      4     10
4  count_21      2      0      1      1      0     15     15      6      5     11
5  count_7       9      8      8      8      9      1      2      1      0      0
6  count_26     13      4     11      5      7      1      1      1      0      0
7  count_64      6      6      8     11      9      1      1      0      0      1
8  count_72      0      0      1      0      0      7      6      4      3      8
9  count_83     14      6      9      2      9      1      0      0      1      1
10 count_27      5      3      6      4      7      0      0      0      1      0
Likelihood ordering      FDR.DE      FWER.DE
1  0.9995791      2>1 0.0004208781 0.0004208781
2  0.9992829      2>1 0.0005689902 0.0011376785
3  0.9990943      2>1 0.0006812318 0.0020423631

```

```

4  0.9985733      2>1 0.0008675879 0.0034661055
5  0.9983926      1>2 0.0010155560 0.0050679624
6  0.9980266      1>2 0.0011752048 0.0070314101
7  0.9962283      1>2 0.0015461322 0.0107765864
8  0.9957691      2>1 0.0018817294 0.0149619013
9  0.9954451      1>2 0.0021787486 0.0194486538
10 0.9941751      1>2 0.0025433681 0.0251603097

```

We can plot the posterior likelihoods against the log-ratios of the two sets of samples using the `plotPosteriors` function, coloring the truly differentially expressed data red and the non-differentially expressed data black (Figure 2).

```
> plotPosteriors(CD, group = "DE", col = c(rep("red", 100), rep("black", 900)))
```

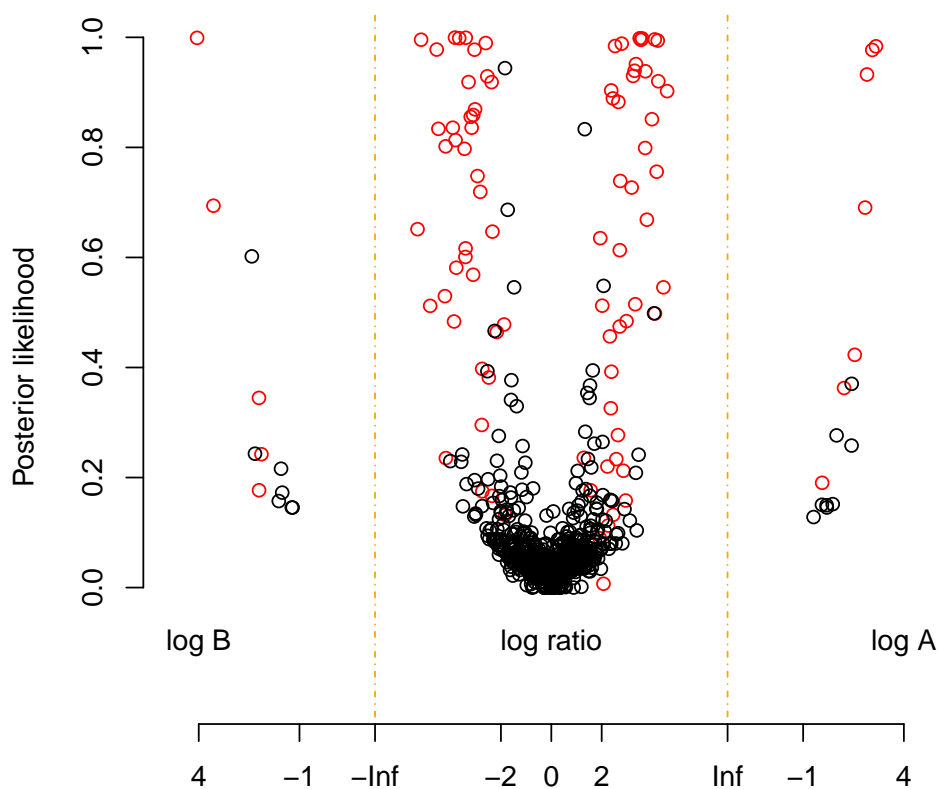


Figure 2: Posterior likelihoods of differential expression against log-ratio (where this would be non-infinite) or log values (where all data in the other sample group consists of zeros). Truly differentially expressed data are colored red, and non-differentially expressed data black.

## 5 Case Study: Analysis of sRNA-Seq Data

---

### 5.1 Introduction

We will look at data sequenced from small RNAs acquired from six samples of root stock from *Arabidopsis thaliana* in a grafting experiment [3]. Three different biological conditions exist within these data; one in which a Dicer 2,3,4 triple mutant shoot is grafted onto a Dicer 2,3,4 triple mutant root (**SL236** & **SL260**), one in which a wild-type shoot is grafted onto a wild-type root (**SL239** & **SL240**), and one in which a wild-type shoot is grafted onto a Dicer 2,3,4 triple mutant root (**SL237** & **SL238**). Dicer 2,3,4 is required for the production of 22nt and 24nt small RNAs, as well as some 21nt ones. Consequently, if we detect differentially expressed sRNA loci in the root stock of the grafts, we can make inferences about the mobility of small RNAs.

### 5.2 Reading in data

The data and annotation are stored in two text files. We can read them in using **R**'s standard functions.

```
> data(mobData)
> data(mobAnnotation)
```

### 5.3 Making a countData object

We can create a countData object containing all the information we need for a first attempt at a differential expression analysis.

#### 5.3.1 Including lengths

If two genes are expressed at the same level, but one is twice the length of the other, then (on average) we will sequence twice as many reads from the longer gene. The same is true for sRNA loci, and so in these analyses it is often useful to include the lengths of each feature. The lengths can be derived from the annotation of each feature, but we need to explicitly declare them within the 'countData' object.

```
> seglens <- mobAnnotation$end - mobAnnotation$start + 1
> cD <- new("countData", data = mobData, seglens = seglens, annotation = mobAnnotation)
```

Determining the best library scaling factor to use is a non-trivial task. The simplest approach would be to use the total number of sequenced reads aligning to the genome. However, this approach means that a few sequences that appear at very high levels can drastically skew the size of the scaling factor. Bullard *et al* suggest that good results can be obtained by taking the sum of the reads below the *n*th percentile of the data.

```
> libsizes(cD) <- getLibsizes(cD, estimationType = "quantile")
```

### 5.4 Pairwise Differential Expression

We start by looking at a pairwise differential expression analysis between two of the sample types. The analysis between samples 'SL236', 'SL260' and 'SL237', 'SL238' should be a first step in discovering sRNA loci associated with mobility.

We begin by selecting a subset of the available data:

```
> cDPair <- cD[,1:4]
```

We then need to define the replicate structure of the countData object. We do this by creating a vector that defines the replicate group that each sample belongs to.

```
> replicates(cDPair) <- as.factor(c("D3/D3", "D3/D3", "WT/D3", "WT/D3"))
```

We next need to define each of the models applicable to the data. In the first case, it is reasonable to suppose that at least some of the loci will be unaffected by the different experimental conditions prevailing in our replicate groups, and so we create one model of no differential expression.

We do this by defining a vector NDE.

```
> NDE <- c(1,1,1,1)
```

Each member of the NDE vector represents one sample in our experiment. By giving each item in the NDE vector the same number, we indicate that, under the hypothesis of no differential expression, all the samples belong to the same group.

We may also conjecture that some of the loci will be affected depending on whether the shoot is a Dicer mutant or a wild-type *Arabidopsis* sample.

```
> mobile <- c("non-mobile", "non-mobile", "mobile", "mobile")
```

This vector indicates that the third and fourth samples, which consist of the wild-type shoot samples, are in a separate expression group to the first and second samples, corresponding to the Dicer 2,3,4 mutant shoot.

We can now add these models to the locus data by modifying the @groups slot

```
> groups(cDPair) <- list(NDE = NDE, mobile = mobile)
```

Now that we have defined our models, we need to establish prior distributions for the data. We do this using the `getPriors.NB` function.

```
> cDPair <- getPriors.NB(cDPair, samplesize = 1e4, cl = cl)
```

The accuracy of the distribution is determined by the number of data points used to estimate the distribution; the 'samplesize'. Here we've used a small sample size to reduce the computational effort required, but higher values will give more accurate results (the default is 1e5).

Having found prior distributions for the data, we can identify posterior likelihoods for the data using the `getLikelihoods` function. Before we do this, however, it is worth considering the possibility that some loci will not be expressed at all in our data.

### 5.4.1 Null Data

We first examine the priors to see if any 'null' data, consisting of un-expressed sRNA loci, are present. If the distribution of priors for the non-differentially expressed group is bimodal, it is likely that some of the loci are expressed at substantially lower levels than others.

```
> plotNullPrior(cDPair)
```

There is some evidence for bimodality, with a small peak of lowly expressed data to the left of the distribution.

We can use the `nullData = TRUE` option in the `getLikelihoods` function to allow for the possibility that some of the loci are miscalled in our locus map, and should properly be identified as nulls.

```
> cDPair <- getLikelihoods(cDPair, nullData = TRUE, cl = cl)
```

If we now look at the `cDPair` object, we can see that we have acquired posterior likelihoods for the data

```
> cDPair
```

```
An object of class "countData"
3000 rows and 4 columns
```

```
Slot "replicates"
D3/D3 D3/D3 WT/D3 WT/D3
```

```
Slot "groups":
```

```
$NDE
```

```
[1] 1 1 1 1
```

```
Levels: 1
```

```
$mobile
```

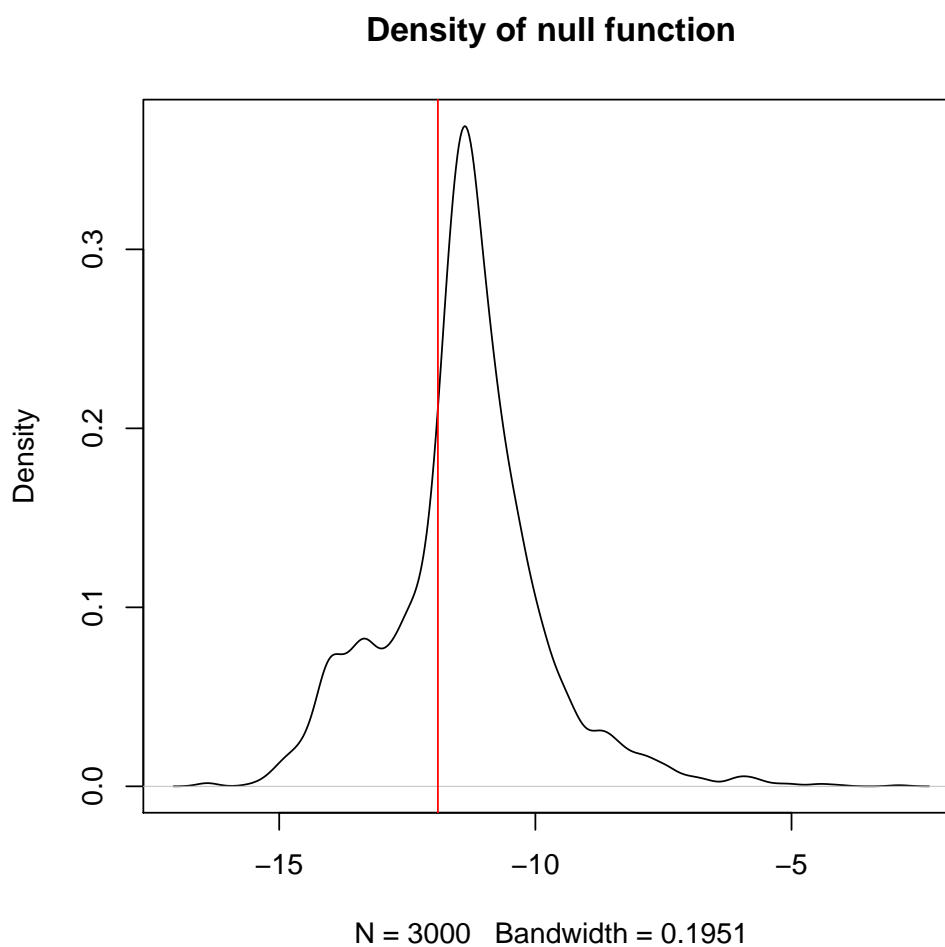


Figure 3: Distribution of  $\mu_{ij}$ . Bimodality suggests the presence of 'null', or un-expressed, data.

```
[1] non-mobile non-mobile mobile      mobile
Levels: mobile non-mobile
```

```
Slot "data":
      SL236 SL260 SL237 SL238
[1,]      0      0      0      0
[2,]     18     21      1      5
[3,]      1      2      2      3
[4,]     68     87    270    184
[5,]     68     87    270    183
2995 more rows...
```

```
Slot "annotation":
   chr start  end
1   1    789  869
2   1   8641  8700
3   1  10578 10599
4   1  17041 17098
5   1  17275 17318
2995 more rows...
Slot "posteriors":
```



```

      NDE      mobile
[1,] 0.0007339011 0.04044102
[2,] 0.1426806451 0.85650686
[3,] 0.7875058038 0.12774249
[4,] 0.2923787270 0.70762127
[5,] 0.3822224098 0.61777759
2995 more rows...

```

The estimated posterior likelihoods for each model are stored in the natural logarithmic scale in the `@posteriors` slot of the `countDataPosterior` object. The  $n$ th column of the posterior likelihoods matrix corresponds to the  $n$ th model as listed in the `group` slot of `CDPair`. In general, what we would like to do with this information is form a ranked list in which the loci most likely to be differentially expressed are at the top of the list.

Try looking at the proportions of data belonging to each group. Note that these no longer sum to 1, as some data are now classified as 'null'.

```

> summarisePosteriors(cD)

numeric(0)

```

The value contained in the `@estProps` slot is a best-guess figure for the proportion of data belonging to each model defined by the `@groups` slot. In this case, it is estimated that approximately 65% of the loci are not differentially expressed, while 35% are differentially expressed. These estimates should not be relied upon absolutely, but are a useful indicator of the global structure of the data.

We can ask for the rows most likely to be differentially expressed under our different models using the `topCounts` function. If we look at the second model, or grouping structure, we see the top candidates for differential expression. Because the library sizes of the different libraries differ, it can be unclear as to why some loci are identified as differentially expressed unless the data are normalised.

```

> topCounts(cDpair, group = 2, normaliseData = TRUE)

```

	chr	start	end	SL236	SL260	SL237	SL238	Likelihood	ordering
1	1	447231	447298	0	0	174	174	0.9999727	mobile>non-mobile
2	1	8287590	8287674	0	0	85	79	0.9997490	mobile>non-mobile
3	1	9254068	9254167	0	0	69	66	0.9996091	mobile>non-mobile
4	1	13463357	13463459	10	10	109	110	0.9992051	mobile>non-mobile
5	1	11140107	11140158	0	0	78	59	0.9988478	mobile>non-mobile
6	1	6880517	6880553	0	0	75	57	0.9984713	mobile>non-mobile
7	1	5056092	5056161	80	132	1	0	0.9984459	non-mobile>mobile
8	1	6127755	6127808	0	0	102	63	0.9984349	mobile>non-mobile
9	1	2157113	2157287	13	11	291	187	0.9984265	mobile>non-mobile
10	1	14188044	14188079	2	0	89	74	0.9982652	mobile>non-mobile

	FDR.mobile	FWER.mobile
1	2.725622e-05	2.725622e-05
2	1.391235e-04	2.782401e-04
3	2.230554e-04	6.690505e-04
4	3.660175e-04	1.463423e-03
5	5.232559e-04	2.613946e-03
6	6.908354e-04	4.138683e-03
7	8.141552e-04	5.686325e-03
8	9.080280e-04	7.242563e-03
9	9.819641e-04	8.804620e-03
10	1.057249e-03	1.052416e-02

Observe how the data change in the normalised results; the effect is particularly noticable in the SL236 and SL260 datasets, in which the normalised data is much less variable between these two samples.

We can also use `topCounts` to examine the data identified as 'null'.

```

> topCounts(cDpair, group = NULL, number = 500)

```

We can visualise the data in a number of ways. We can first examine the posterior likelihoods against log-ratio values.

```

> plotPosteriors(cDpair, group = 2, samplesA = 1:2, samplesB = 3:4)

```

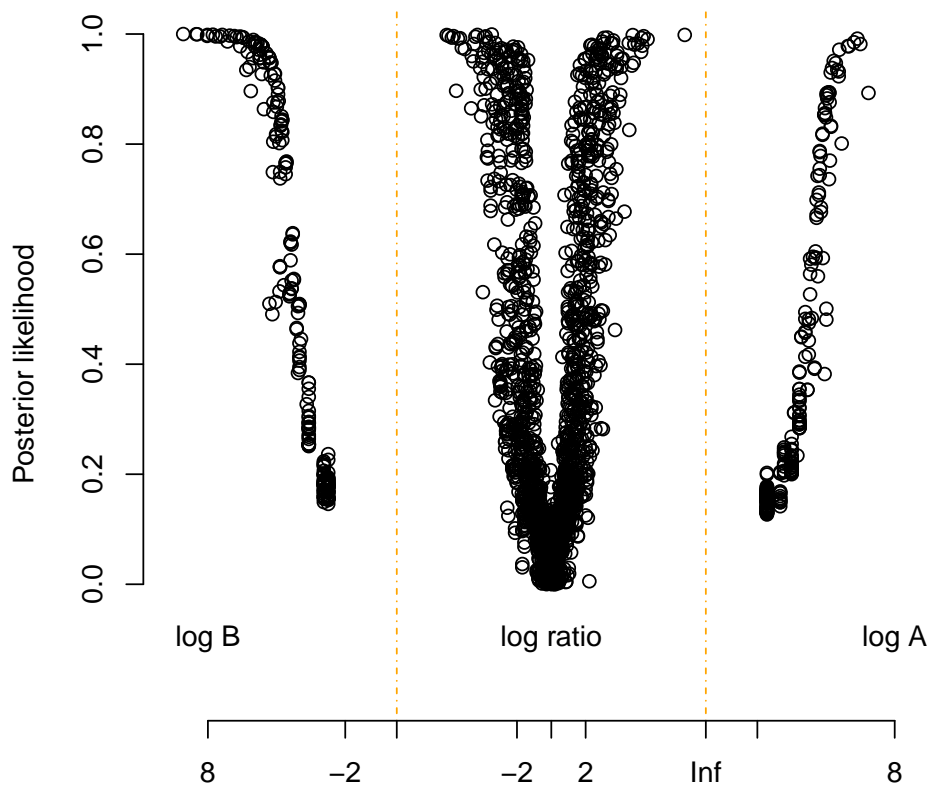


Figure 4: Posterior likelihoods of differential expression against log-ratios of the data. Where the data in one of the sample groups consists entirely of zeros, the log-ratio would be infinite. In this case, we plot instead the log-values of the non-zero group. Note the skew in the data; there are many more loci with a high-likelihood of differential expression over-expressed in the WT/D3 graft compared to the D3/D3 graft than vice versa.

Also informative is the MA-plot. We can color the data by the posterior likelihoods of differential expression.

```
> plotMA.CD(cDPair, samplesA = c(1,2), samplesB = c(3,4),
+           col = rgb(red = exp(cDPair@posteriors[,2]), green = 0, blue = 0))
```

## 5.5 Multiple Group Comparisons

We next examine all three experimental conditions simultaneously. We first need to define the replicate structure of the data.

```
> cD@replicates <- as.factor(c("D3/D3", "D3/D3", "WT/D3", "WT/D3", "WT/WT", "WT/WT"))
```

As before, we begin by supposing that at least some of the loci will be unaffected by the different experimental conditions prevailing in our replicate groups, and so we create one model of no differential expression.

We do this by defining a vector NDE.

```
> NDE <- factor(c(1,1,1,1,1,1))
```

Each member of the NDE vector represents one sample in our experiment. By giving each item in the NDE vector the same number, we indicate that, under the hypothesis of no differential expression, all the samples belong to the same

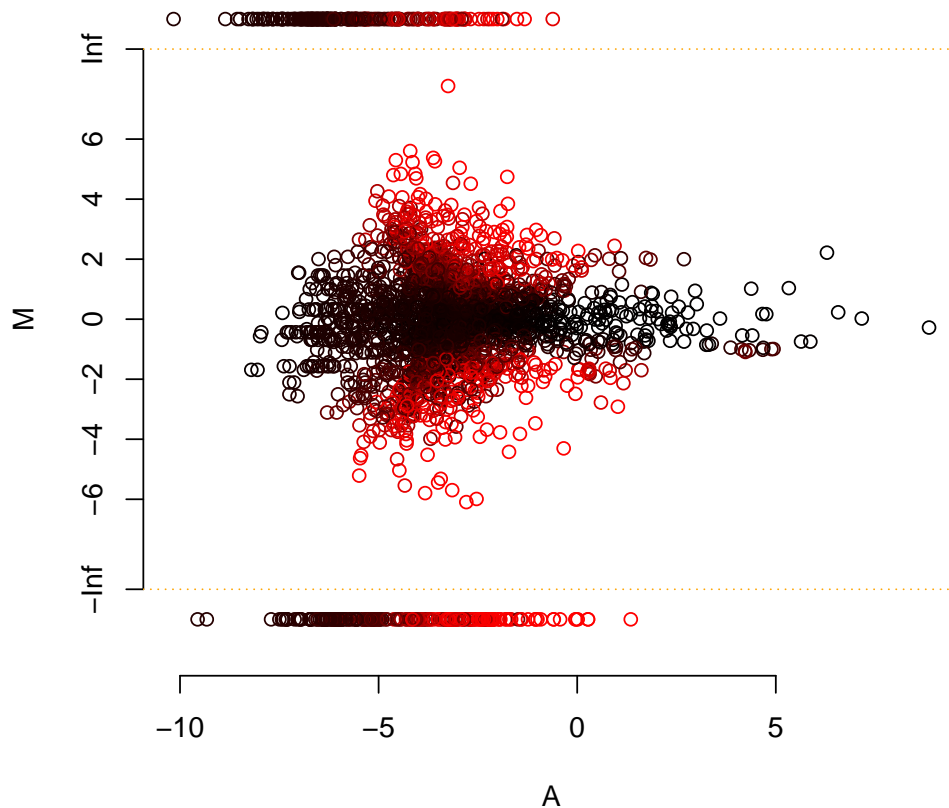


Figure 5: 'MA'-plot for count data. Where the data in one of the sample groups consists entirely of zeros, the log-ratio would be infinite. In this case, we plot instead the log-values of the non-zero group. Differentially expressed data are colored red, and non-differentially expressed data black.

group.

We may also conjecture that some of the loci that are present in the wild-type root will not be present in the Dicer 2,3,4 mutant roots. We represent this conjecture with the vector

```
> d3dep <- c("wtRoot", "wtRoot", "wtRoot", "wtRoot", "dicerRoot", "dicerRoot")
```

This vector indicates that the fifth and sixth samples, which consist of the wild-type root samples, are in a separate expression group to the other samples, corresponding to the Dicer 2,3,4 mutant.

Finally, we hypothesise that some of the small RNAs generated in the wild-type shoot will move to the root. We represent this hypothesis with the vector

```
> mobile <- c("dicerShoot", "dicerShoot", "wtShoot", "wtShoot", "wtShoot", "wtShoot")
```

This vector shows that all samples with a wild-type shoot are distinct from those samples with a Dicer 2,3,4 shoot.

We can now add these models to the locus data by modifying the @groups slot

```
> groups(cD) <- list(NDE = NDE, d3dep = d3dep, mobile = mobile)
```

Note that in this case the replicate structure does not correspond to any biologically plausible model; we do not expect that any loci will be different between all three experimental groups.

We can now find the priors and likelihoods for this analysis as before.

```
> cD <- getPriors.NB(cD, cl = cl)
> cD <- getLikelihoods(cD, nullData = TRUE, cl = cl)
```

We can see if there are any potential candidates for mobile sRNA loci by using the 'topCounts' function.

```
> topCounts(cD, group = "mobile", normaliseData = TRUE)
```

	chr	start	end	SL236	SL260	SL237	SL238	SL239	SL240	Likelihood
1	1	447231	447298	0	0	202	203	166	157	0.9999998
2	1	8287590	8287674	0	0	100	92	59	89	0.9999988
3	1	14188044	14188079	3	0	103	86	92	79	0.9999976
4	1	6127755	6127808	0	0	119	73	100	61	0.9999948
5	1	6880517	6880553	0	0	88	66	58	59	0.9999920
6	1	9254068	9254167	0	0	80	76	55	40	0.9999827
7	1	11140107	11140158	0	0	91	69	61	40	0.9999676
8	1	13042720	13042777	3	4	63	50	50	56	0.9999521
9	1	9373429	9373528	0	0	62	43	36	39	0.9999406
10	1	8766946	8767133	91	152	5	4	7	7	0.9999245

	ordering	FDR.mobile	FWER.mobile
1	wtShoot>dicerShoot	2.041824e-07	2.041824e-07
2	wtShoot>dicerShoot	6.910091e-07	1.382018e-06
3	wtShoot>dicerShoot	1.271044e-06	3.813129e-06
4	wtShoot>dicerShoot	2.244820e-06	8.979257e-06
5	wtShoot>dicerShoot	3.393978e-06	1.696980e-05
6	wtShoot>dicerShoot	5.714151e-06	3.428452e-05
7	wtShoot>dicerShoot	9.525785e-06	6.667900e-05
8	wtShoot>dicerShoot	1.431836e-05	1.145422e-04
9	wtShoot>dicerShoot	1.932927e-05	1.739519e-04
10	dicerShoot>wtShoot	2.494197e-05	2.493951e-04

We can also identify dicer-dependent root specific small RNA loci by examining our alternative model for differential expression.

```
> topCounts(cD, group = "d3dep", normaliseData = TRUE)
```

	chr	start	end	SL236	SL260	SL237	SL238	SL239	SL240	Likelihood	ordering
1	1	12726934	12726976	5	5	6	10	42	41	0.9987543	dicerRoot>wtRoot
2	1	9013965	9014013	5	5	5	9	37	36	0.9987494	dicerRoot>wtRoot
3	1	8741412	8741466	5	4	1	0	37	46	0.9981881	dicerRoot>wtRoot
4	1	14154618	14154660	23	36	17	20	196	254	0.9981549	dicerRoot>wtRoot
5	1	13689324	13689396	6	5	5	7	30	25	0.9979620	dicerRoot>wtRoot
6	1	12824336	12824400	0	1	0	0	7	5	0.9926360	dicerRoot>wtRoot
7	1	8238064	8238106	7	5	8	5	30	23	0.9887765	dicerRoot>wtRoot
8	1	14206419	14206455	32	34	46	32	9	13	0.9867186	wtRoot>dicerRoot
9	1	2105085	2105119	9	8	8	4	0	0	0.9865287	wtRoot>dicerRoot
10	1	6263246	6263343	0	1	2	0	9	9	0.9862473	dicerRoot>wtRoot

	FDR.d3dep	FWER.d3dep
1	0.001245663	0.001245663
2	0.001248108	0.002494658
3	0.001436028	0.004302005
4	0.001538291	0.006139147
5	0.001638234	0.008164642
6	0.002592534	0.015468552
7	0.003825527	0.026518426
8	0.005007506	0.039447581
9	0.005947927	0.052387470
10	0.006728409	0.065419748

By including more experimental conditions in our analyses, increasingly complex patterns of expression can be detected from sequencing data.

Finally, we shut down the cluster (assuming it was started to begin with).

```
> if(!is.null(cl)) stopCluster(cl)
```

## Session Info

---

```
> sessionInfo()
```

```
R version 3.2.0 RC (2015-04-08 r68161)
```

```
Platform: x86_64-w64-mingw32/x64 (64-bit)
```

```
Running under: Windows Server 2008 R2 x64 (build 7601) Service Pack 1
```

```
locale:
```

```
[1] LC_COLLATE=C LC_CTYPE=English_United States.1252
```

```
[3] LC_MONETARY=English_United States.1252 LC_NUMERIC=C
```

```
[5] LC_TIME=English_United States.1252
```

```
attached base packages:
```

```
[1] stats4 parallel stats graphics grDevices utils datasets methods
```

```
[9] base
```

```
other attached packages:
```

```
[1] baySeq_2.2.0 perm_1.0-0.0 abind_1.4-3 GenomicRanges_1.20.0
```

```
[5] GenomeInfoDb_1.4.0 IRanges_2.2.0 S4Vectors_0.6.0 BiocGenerics_0.14.0
```

```
loaded via a namespace (and not attached):
```

```
[1] BiocStyle_1.6.0 XVector_0.8.0 tools_3.2.0
```

## References

---

- [1] Thomas J. Hardcastle and Krystyna A. Kelly. *baySeq: Empirical Bayesian Methods For Identifying Differential Expression In Sequence Count Data*. BMC Bioinformatics (2010).
- [2] Thomas J. Hardcastle. *Generalised empirical Bayesian methods for discovery of differential data in high-throughput biology*. bioRxiv preprint (2015).
- [3] Attila Molnar and Charles W. Bassett and Thomas J. Hardcastle and Ruth Dunn and David C. Baucombe *Small silencing RNAs in plants are mobile and direct epigenetic modification in recipient cells*. Science (2010).