

# *DirichletMultinomial* for Clustering and Classification of Microbiome Data

Martin Morgan

Modified: 6 March 2012. Compiled: May 2, 2014

This document illustrates the main features of the *DirichletMultinomial* package, and in the process replicates key tables and figures from [1].

We start by loading the package, in addition to the packages *lattice* (for visualization) and *parallel* (for use of multiple cores during cross-validation).

```
> library(DirichletMultinomial)
> library(lattice)
> library(xtable)
> library(parallel)
```

We set the width of R output to 70 characters, and the number of floating point digits displayed to two. The `full` flag is set to `FALSE`, so that cached values are used instead of re-computing during production of this vignette. The package defines a set of standard colors; we use `.qualitative` during visualization. `dev.off` is redefined to return without displaying results

```
> options(width=70, digits=2)
> full <- FALSE
> .qualitative <- DirichletMultinomial:::.qualitative
> dev.off <- function(...) invisible(grDevices::dev.off(...))
```

## 1 Data

The data used in [1] is included in the package. We read the data in to a matrix `count` of samples  $\times$  taxa.

```
> fl <- system.file(package="DirichletMultinomial", "extdata",
+                   "Twins.csv")
> count <- t(as.matrix(read.csv(fl, row.names=1)))
> count[1:5, 1:3]
```

	Acetanaerobacterium	Acetivibrio	Acetobacterium
TS1.2	0	0	0

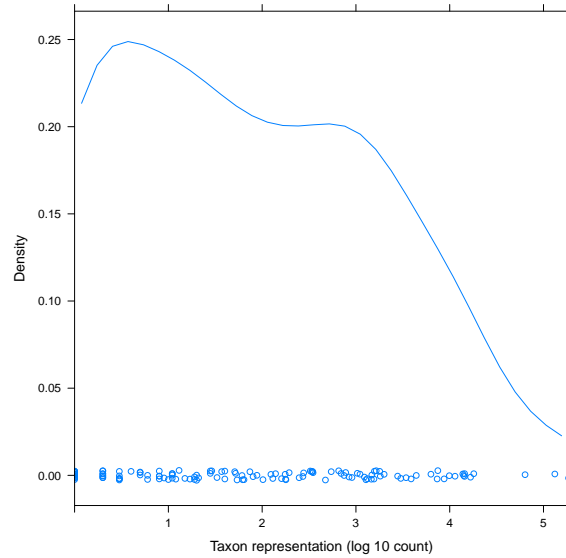


Figure 1: Density of taxa, across samples

TS10.2	0	0	0
TS100.2	0	0	0
TS100	1	0	0
TS101.2	0	0	0

Figure 1 shows the distribution of reads from each taxon, on a log scale.

```
> cnts <- log10(colSums(count))
> pdf("taxon-counts.pdf")
> densityplot(cnts, xlim=range(cnts),
+             xlab="Taxon representation (log 10 count)")
> dev.off()
```

## 2 Clustering

The `dmn` function fits a Dirichlet-Multinomial model, taking as input the count data and a parameter  $k$  representing the number of Dirichlet components to model. Here we fit the count data to values of  $k$  from 1 to 7, displaying the result for  $k = 4$ . A sense of the model return value is provided by the documentation for the R object `fit, class ? DMN`.

```
> if (full) {
+   fit <- mclapply(1:7, dmn, count=count, verbose=TRUE)
```

```
+      save(fit, file=file.path(tempdir(), "fit.rda"))
+ } else data(fit)
> fit[[4]]
```

```
class: DMN
k: 4
samples x taxa: 278 x 130
Laplace: 38781 BIC: 40425 AIC: 39477
```

The return value can be queried for measures of fit (Laplace, AIC, BIC); these are plotted for different  $k$  in Figure 2. The best fit is for  $k = 4$  distinct Dirichlet components.

```
> lplc <- sapply(fit, laplace)
> pdf("min-laplace.pdf")
> plot(lplc, type="b", xlab="Number of Dirichlet Components",
+      ylab="Model Fit")
> dev.off()
> (best <- fit[[which.min(lplc)]])
```

```
class: DMN
k: 4
samples x taxa: 278 x 130
Laplace: 38781 BIC: 40425 AIC: 39477
```

In addition to `laplace` goodness of fit can be assessed with the AIC and BIC functions.

The `mixturewt` function reports the weight  $\pi$  and homogeneity  $\theta$  (large values are more homogeneous) of the fitted model. `mixture` returns a matrix of sample x estimated Dirichlet components; the argument `assign` returns a vector of length equal to the number of samples indicating the component with maximum value.

```
> mixturewt(best)

      pi theta
1 0.31    52
2 0.17    19
3 0.30    53
4 0.22    30

> head(mixture(best), 3)

      [,1] [,2] [,3] [,4]
TS1.2 1.0e+00 2.1e-11 8.6e-06 3.3e-08
TS10.2 3.8e-08 3.3e-04 1.0e+00 2.8e-10
TS100.2 7.2e-09 8.8e-01 8.0e-13 1.2e-01
```

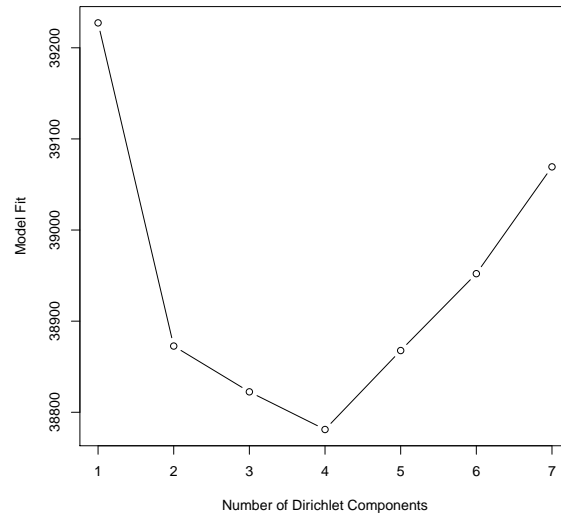


Figure 2: Model fit as a function of Dirichlet component number

The `fitted` function describes the contribution of each taxonomic group (each point in the panels of Figure 3 to the Dirichlet components; the diagonal nature of the points in a panel suggest that the Dirichlet components are correlated, perhaps reflecting overall numerical abundance.

```
> pdf("fitted.pdf")
> splom(log(fitted(best)))
> dev.off()
```

The posterior mean difference between the best and single-component Dirichlet multinomial model measures how each component differs from the population average; the sum is a measure of total difference from the mean.

```
> p0 <- fitted(fit[[1]], scale=TRUE)      # scale by theta
> p4 <- fitted(best, scale=TRUE)
> colnames(p4) <- paste("m", 1:4, sep="")
> (meandiff <- colSums(abs(p4 - as.vector(p0))))
```

```
      m1      m2      m3      m4
0.26 0.47 0.51 0.34
```

```
> sum(meandiff)
```

```
[1] 1.6
```

Table 1 summarizes taxonomic contributions to each Dirichlet component.

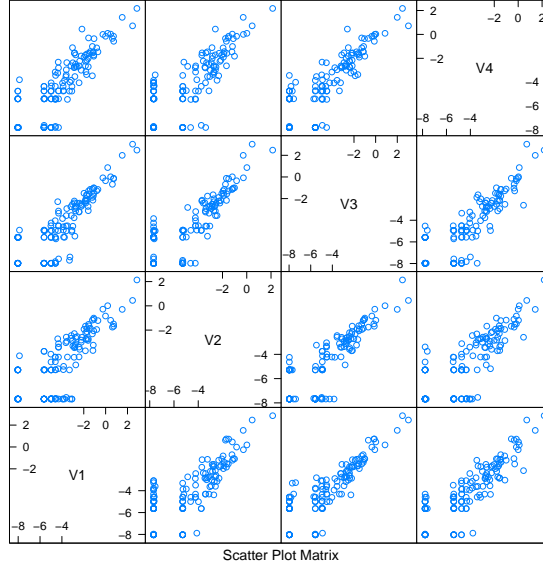


Figure 3: Taxa fitted to Dirichlet components 1-4.

```
> diff <- rowSums(abs(p4 - as.vector(p0)))
> o <- order(diff, decreasing=TRUE)
> cdiff <- cumsum(diff[o]) / sum(diff)
> df <- head(cbind(Mean=p0[o], p4[o,], diff=diff[o], cdiff), 10)
```

Table 1: Taxonomic contributions (10 largest) to Dirichlet components.

	Mean	m1	m2	m3	m4	diff	cdiff
Bacteroides	0.17	0.23	0.08	0.39	0.07	0.46	0.29
Unknown	0.31	0.34	0.45	0.22	0.29	0.27	0.46
Faecalibacterium	0.10	0.09	0.04	0.14	0.14	0.15	0.56
Prevotella	0.01	0.00	0.00	0.00	0.05	0.06	0.59
Alistipes	0.02	0.04	0.01	0.02	0.02	0.04	0.62
Dorea	0.03	0.01	0.04	0.02	0.03	0.04	0.65
Ruminococcus	0.02	0.04	0.01	0.01	0.02	0.04	0.67
Oscillibacter	0.03	0.04	0.01	0.02	0.03	0.04	0.70
Roseburia	0.04	0.02	0.05	0.04	0.04	0.04	0.72
Subdoligranulum	0.03	0.03	0.02	0.02	0.03	0.03	0.74

Figure 4 shows samples arranged by Dirichlet component, with samples placed into the component for which they had the largest fitted value.

```
> pdf("heatmap1.pdf")
> heatmapdmn(count, fit[[1]], best, 30)
```



Figure 4: Samples arranged by Dirichlet component. Narrow columns are samples, broader columns component averages. Rows are taxonomic groups. Color represents square-root counts, with dark colors corresponding to larger counts.

```
> dev.off()
```

### 3 Generative classifier

The following reads in phenotypic information ('Lean', 'Obese', 'Overweight') for each sample.

```
> fl <- system.file(package="DirichletMultinomial", "extdata",
+                   "TwinStudy.t")
> pheno0 <- scan(fl)
> lvls <- c("Lean", "Obese", "Overwt")
> pheno <- factor(lvls[pheno0 + 1], levels=lvls)
> names(pheno) <- rownames(count)
> table(pheno)
```

```
pheno
  Lean  Obese Overwt
    61   193     24
```

Here we subset the count data into sub-counts, one for each phenotype. We retain only the Lean and Obese groups for subsequent analysis.

```
> counts <- sapply(levels(pheno), csubset, count, pheno)
> sapply(counts, dim)
```

```
      Lean Obese Overwt
[1,]   61   193    24
[2,]  130   130   130
```

```
> keep <- c("Lean", "Obese")
> count <- count[pheno %in% keep,]
> pheno <- factor(pheno[pheno %in% keep], levels=keep)
```

The `dmngroup` function identifies the best (minimum Laplace score) Dirichlet-multinomial model for each group.

```
> if (full) {
+   bestgrp <- dmngroup(count, pheno, k=1:5, verbose=TRUE,
+                       mc.preschedule=FALSE)
+   save(bestgrp, file=file.path(tempdir(), "bestgrp.rda"))
+ } else data(bestgrp)
```

The Lean group is described by a model with one component, the Obese group by a model with three components. Three of the four Dirichlet components of the original single group (**best**) model are represented in the Obese group, the other in the Lean group. The total Laplace score of the two group model is less than of the single-group model, indicating information gain from considering groups separately.

```
> bestgrp
```

```
class: DMNGroup
```

```
summary:
```

	k	samples	taxa	NLE	LogDet	Laplace	BIC	AIC
Lean	1	61	130	9066	162	9027	9333	9196
Obese	3	193	130	26770	407	26613	27801	27162

```
> lapply(bestgrp, mixturewt)
```

```
$Lean
```

```
  pi theta
1  1    35
```

```
$Obese
```

```
  pi theta
1 0.53    45
2 0.26    33
3 0.22    18
```

```
> c(sapply(bestgrp, laplace),
+   `Lean+Obese`=sum(sapply(bestgrp, laplace)),
+   Single=laplace(best))
```

Lean	Obese	Lean+Obese	Single
9027	26613	35641	38781

The `predict` function assigns samples to classes; the confusion matrix shows that the classifier is moderately effective.

```
> xtabs(~pheno + predict(bestgrp, count, assign=TRUE))
```

```

      predict(bestgrp, count, assign = TRUE)
pheno  Lean Obese
Lean   38   23
Obese  15  178

```

The `cvdmgngroup` function performs cross-validation. This is a computationally expensive step.

```

> if (full) {
+   ## full leave-one-out; expensive!
+   xval <- cvdmngroup(nrow(count), count, c(Lean=1, Obese=3), pheno,
+     verbose=TRUE, mc.preschedule=FALSE)
+   save(xval, file=file.path(tempdir(), "xval.rda"))
+ } else data(xval)

```

Figure 5 shows an ROC curve for the single and two-group classifier. The single group classifier is performing better than the two-group classifier.

```

> bst <- roc(pheno[rownames(count)] == "Obese",
+   predict(bestgrp, count)[, "Obese"])
> bst$Label <- "Single"
> two <- roc(pheno[rownames(xval)] == "Obese",
+   xval[, "Obese"])
> two$Label <- "Two group"
> both <- rbind(bst, two)
> pars <- list(superpose.line=list(col=.qualitative[1:2], lwd=2))
> pdf("roc.pdf")
> xyplot(TruePositive ~ FalsePositive, group=Label, both,
+   type="l", par.settings=pars,
+   auto.key=list(lines=TRUE, points=FALSE, x=.6, y=.1),
+   xlab="False Positive", ylab="True Positive")
> dev.off()

```

```
> toLatex(sessionInfo())
```

- R version 3.1.0 (2014-04-10), x86\_64-apple-darwin13.1.0
- Locale: C/en\_US.UTF-8/en\_US.UTF-8/C/en\_US.UTF-8/en\_US.UTF-8
- Base packages: base, datasets, grDevices, graphics, methods, parallel, stats, utils



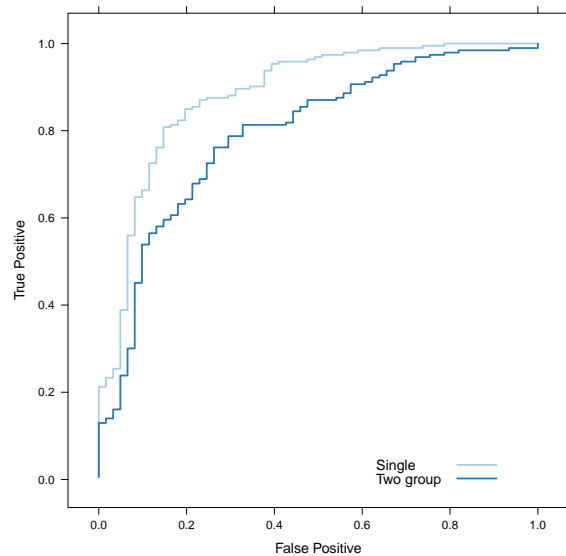


Figure 5: Receiver-operator curves for the single and two-group classifiers.

- Other packages: BiocGenerics 0.10.0, DirichletMultinomial 1.6.0, IRanges 1.22.5, lattice 0.20-29, xtable 1.7-3
- Loaded via a namespace (and not attached): grid 3.1.0, stats4 3.1.0, tools 3.1.0

## References

- [1] I. Holmes, K. Harris, and C. Quince. Dirichlet multinomial mixtures: Generative models for microbial metagenomics. *PLoS ONE*, 7(2):e30126, 02 2012.